



April 10th, 2025

CN-289 R-1 Bridge Repairs

East Rutherford, New Jersey

Bids Due By: Thursday, April 17th, 2025 at 12:00 pm

ADDENDUM #2

RFI Questions

- Question:** Bid Item Numbers 9 and 22 read Pressure Injection, Concrete Cracks. Technical Specifications refer NJDOT Section 552.03.01, Pressure Injection Concrete Cracks. Contract Drawing S-401 repair details C & D illustrate and provide procedures for concrete crack repairs. However, the vast majority of the crack repair areas hatched out on Drawings S-101 (South Connector Bridge) and S-102 (North Connector Bridge) are in the asphalt approaches to the Bridges. Please provide a Specification and Details for crack repairs in Asphalt. Since the methods and costs of concrete and asphalt crack repairs are significantly different, it is suggested different Bid Items with appropriate quantities be created for each type of repair

Response: Items have been separated. Please refer to Attachment #2 for the updated set of drawings. Attachment #1 contains the revised schedule of bid prices, which should be used in your bid submission.

Please be advised that the bid due date has been extended to Thursday, April 17th, 2025 at 12:00 PM.

Attachments

- Attachment #1 (Revised Schedule of Bid Prices) – Issued April 10th, 2025
- Attachment #2 (Updated Drawing Set) – Issued April 10th, 2025

Include the acknowledgment of this addendum in your proposal submission.

Company	Name (Print)	Date
---------	--------------	------

Receipt of Addendum #2: _____ (Signature)

End of Addendum #2

Attachment #1

Revised Schedule of Bid Prices

**Project CN-289 R-1 NJSEA Bridge Repairs
SECTION 00300 – BID SHEETS**

SCHEDULE OF BID PRICES

NJSEA NJ#4900-001 SOUTH CONNECTOR BRIDGE DECK REPAIRS

ITEM NO.	ESTIMATED QUANTITIES	ITEM	UNIT PRICE	AMOUNT
1.	LUMP SUM	MOBILIZATION	\$_____	\$_____
2.	LUMP SUM	MAINTENANCE AND PROTECTION OF TRAFFIC	\$_____	\$_____
3.	1 DOL	CONSTRUCTION LAYOUT	\$_____	\$_____
4.	1 UNIT	OIL ONLY EMERGENCY SPILL KIT, TYPE 1	\$_____	\$_____
5.	LUMP SUM	CLEARING SITE	\$_____	\$_____
6.	200 LF	SEALING CRACKS IN HMA SURFACE COURSE	\$_____	\$_____
7.	38 SY	EPOXY WATERPROOFING	\$_____	\$_____
8.	12 LF	CHAIN-LINK FENCE, PVC-COATED STEEL, 8' HIGH	\$_____	\$_____
9.	125 SF	CONCRETE DECK REPAIR, TYPE B	\$_____	\$_____
10.	20 LF	PRESSURE INJECTION, CONCRETE CRACKS	\$_____	\$_____
11.	875 SF	SPALL REPAIRS	\$_____	\$_____
12.	1 UNIT	APPROACH GUIDE RAIL TRANSITION TL-3	\$_____	\$_____
13.	130 LF	HEADER RECONSTRUCTION	\$_____	\$_____
14.	95 LF	9"X18" CONCRETE VERTICAL CURB	\$_____	\$_____
15.	1130 LF	TRAFFIC STRIPES, 4"	\$_____	\$_____

**Project CN-289 R-1 NJSEA Bridge Repairs
SECTION 00300 – BID SHEETS**

NJSEA NJ#4900-002 NORTH CONNECTOR BRIDGE DECK REPAIRS

ITEM NO.	ESTIMATED QUANTITIES	ITEM	UNIT PRICE	AMOUNT
16.	LUMP SUM	MOBILIZATION	\$_____	\$_____
17.	LUMP SUM	MAINTENANCE AND PROTECTION OF TRAFFIC	\$_____	\$_____
18.	1 DOL	CONSTRUCTION LAYOUT	\$_____	\$_____
19.	1 UNIT	OIL ONLY EMERGENCY SPILL KIT, TYPE 1	\$_____	\$_____
20.	LUMP SUM	CLEARING SITE	\$_____	\$_____
21.	500 LF	SEALING CRACKS IN HMA SURFACE COURSE	\$_____	\$_____
22.	52 SY	EPOXY WATERPROOFING	\$_____	\$_____
23.	15 SF	CONCRETE DECK REPAIR, TYPE B	\$_____	\$_____
24.	8 LF	PRESSURE INJECTION, CONCRETE CRACKS	\$_____	\$_____
25.	190 SF	SPALL REPAIRS	\$_____	\$_____
26.	4 SY	RIPRAP STONE SLOPE PROTECTION, 12" THICK (D50= 6")	\$_____	\$_____
27.	15 LF	BEAM GUIDE RAIL	\$_____	\$_____
28.	LUMP SUM	REMOVE/REINSTALL EXISTING BRIDGE MOUNTED SIGN	\$_____	\$_____
29.	1235 LF	TRAFFIC STRIPES, 4"	\$_____	\$_____

**Project CN-289 R-1 NJSEA Bridge Repairs
SECTION 00300 – BID SHEETS**

NJSEA NJ#4900-003 PEDESTRIAN BRIDGE DECK REPAIRS

ITEM NO.	ESTIMATED QUANTITIES	ITEM	UNIT PRICE	AMOUNT
30.	LUMP SUM	MOBILIZATION	\$_____	\$_____
31.	LUMP SUM	MAINTENANCE AND PROTECTION OF TRAFFIC	\$_____	\$_____
32.	1 DOL	CONSTRUCTION LAYOUT	\$_____	\$_____
33.	1 UNIT	OIL ONLY EMERGENCY SPILL KIT, TYPE 1	\$_____	\$_____
34.	LUMP SUM	CLEARING SITE	\$_____	\$_____
35.	LUMP SUM	TEMPORARY SHIELDING	\$_____	\$_____
36.	10 SF	SPALL REPAIRS	\$_____	\$_____
37.	LUMP SUM	STEEL PEDESTRIAN BRIDGE	\$_____	\$_____
38.	LUMP SUM	SCUPPER	\$_____	\$_____
39.	LUMP SUM	ANCHOR BOLT INSTALLATION	\$_____	\$_____

Project CN-289 R-1 NJSEA Bridge Repairs
SECTION 00300 – BID SHEETS

NJSEA Bridge Repairs - South, North and Pedestrian Bridge

I (we) hereby propose to furnish and install all work associated with the work described in these Bid Documents for the **NJSEA Bridge Repairs - South, North and Pedestrian Bridge**

Base Bid:

Total amount for the furnishing of all labor, materials, services, equipment and appliances required in conjunction with and properly incidental to all work, in conformance with all bid documents and contract documents.

In case of a discrepancy between the amount shown in words and the amount shown in figures, the amount shown in words shall govern.

Contractor shall provide pricing for item numbers: 1 through 39

TOTAL BASE BID PRICE:

(\$ _____)
Total Lump Sum - *in words*

(\$ _____)
Total Lump Sum - *In figures*

I, or We, hereby commit to complete these project tasks within:

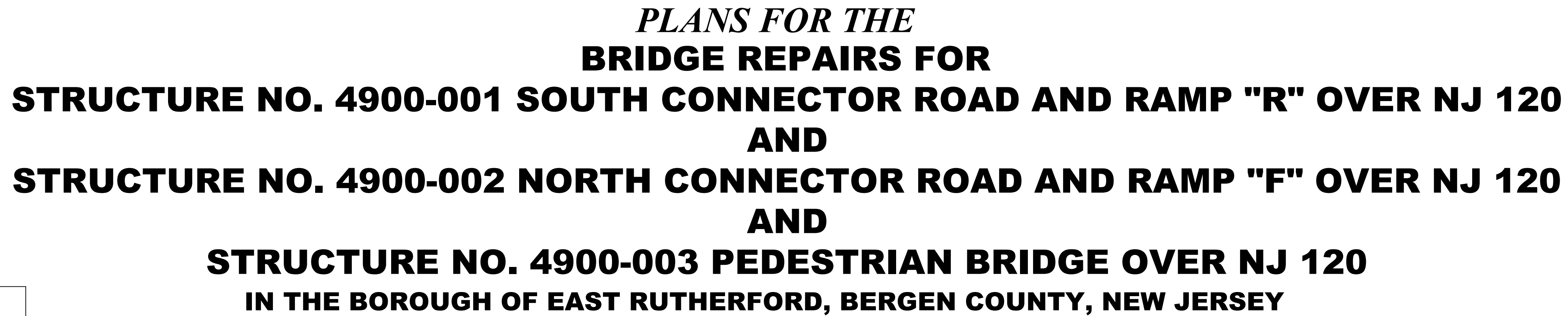
Number of Calendar Days to Complete

Contractor Signature

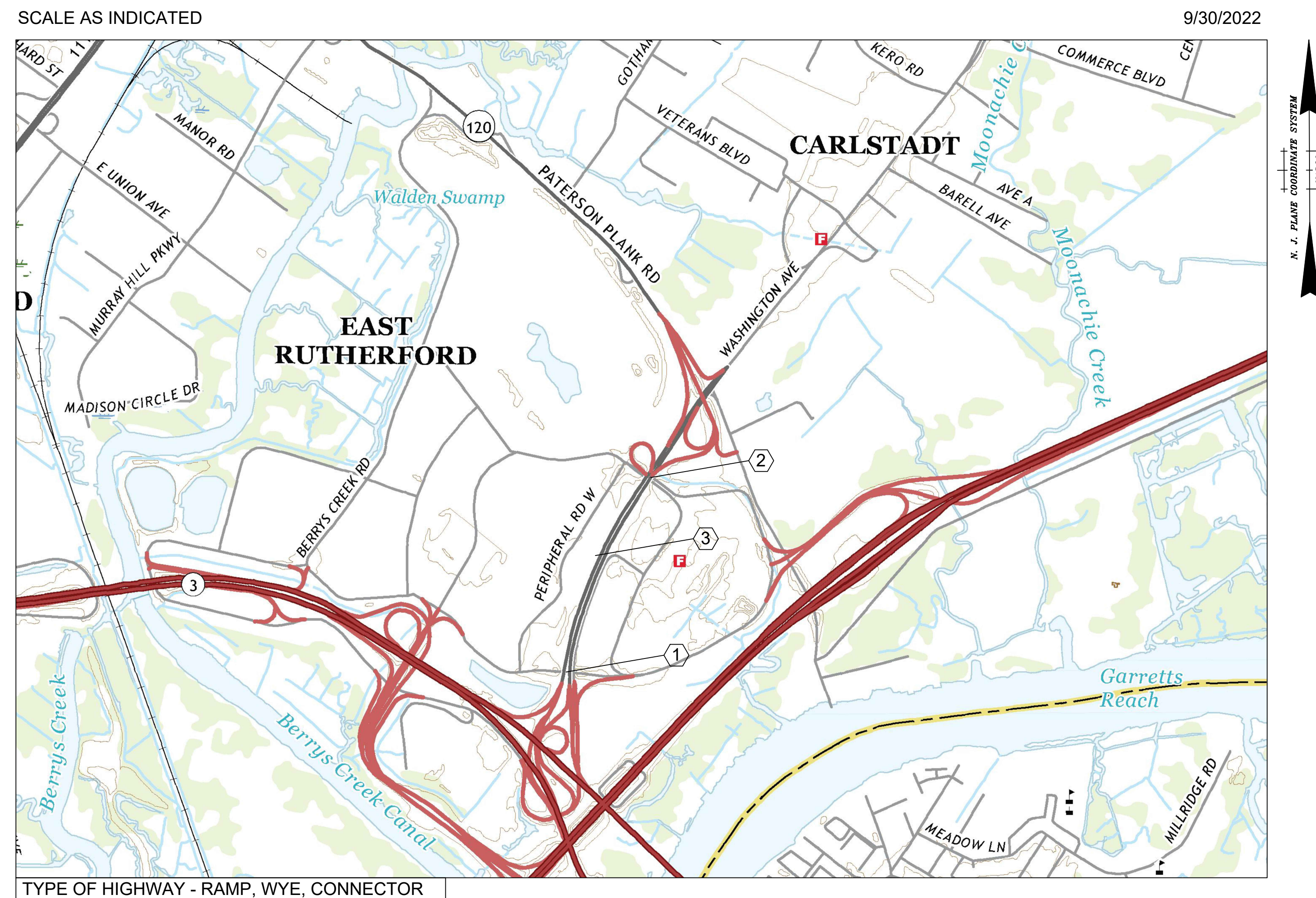
If this Bid shall be accepted by the NJSEA, and the undersigned shall fail to contract as aforesaid, the NJSEA shall be entitled to recover from the Bidder those moneys as specified in Article 7.0 of the **INSTRUCTIONS TO BIDDERS**.

Attachment #2

Updated Drawing Set



INDEX OF SHEETS	
SHEET NO.	DESCRIPTION
1	KEY SHEET
2	GENERAL NOTES & EDQ & CONSTRUCTION LEGEND
3	ESTIMATE DISTRIBUTION OF QUANTITIES
4	SOUTH CONNECTOR GENERAL PLAN AND ELEVATION BRIDGE REPAIRS
5	NORTH CONNECTOR GENERAL PLAN AND ELEVATION BRIDGE REPAIRS
6	PEDESTRIAN BRIDGE GENERAL PLAN & ELEVATION BRIDGE REPAIRS
7	SOUTH CONNECTOR SECTIONS BRIDGE REPAIRS
8	NORTH CONNECTOR SECTIONS BRIDGE REPAIRS
9	PEDESTRIAN BRIDGE SECTIONS BRIDGE REPAIRS
10	SOUTH CONNECTOR TRAFFIC STRIPPING PLAN
11	NORTH CONNECTOR TRAFFIC STRIPPING PLAN
12-20	BRIDGE CONSTRUCTION DETAILS



KEY MAP

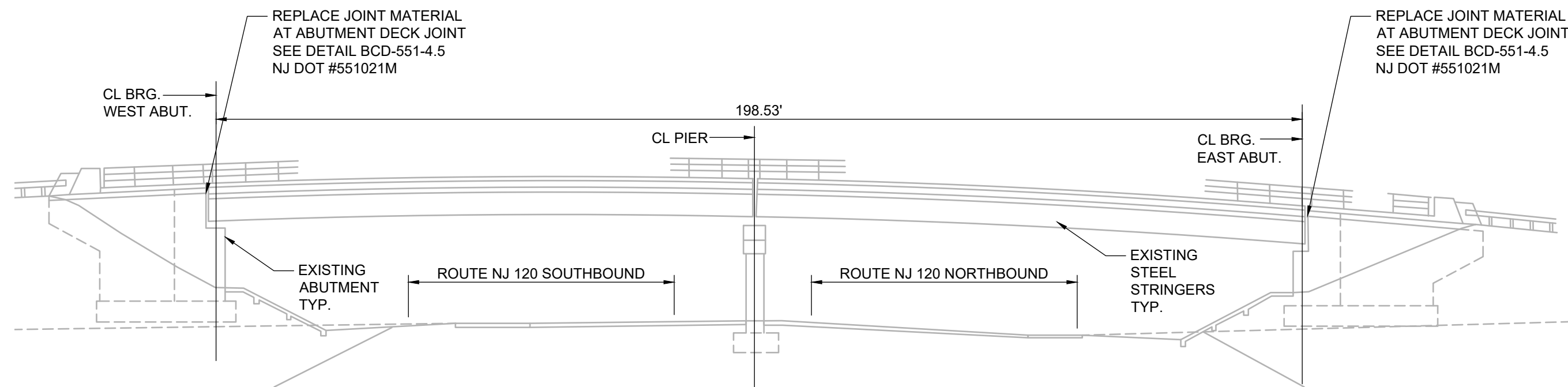
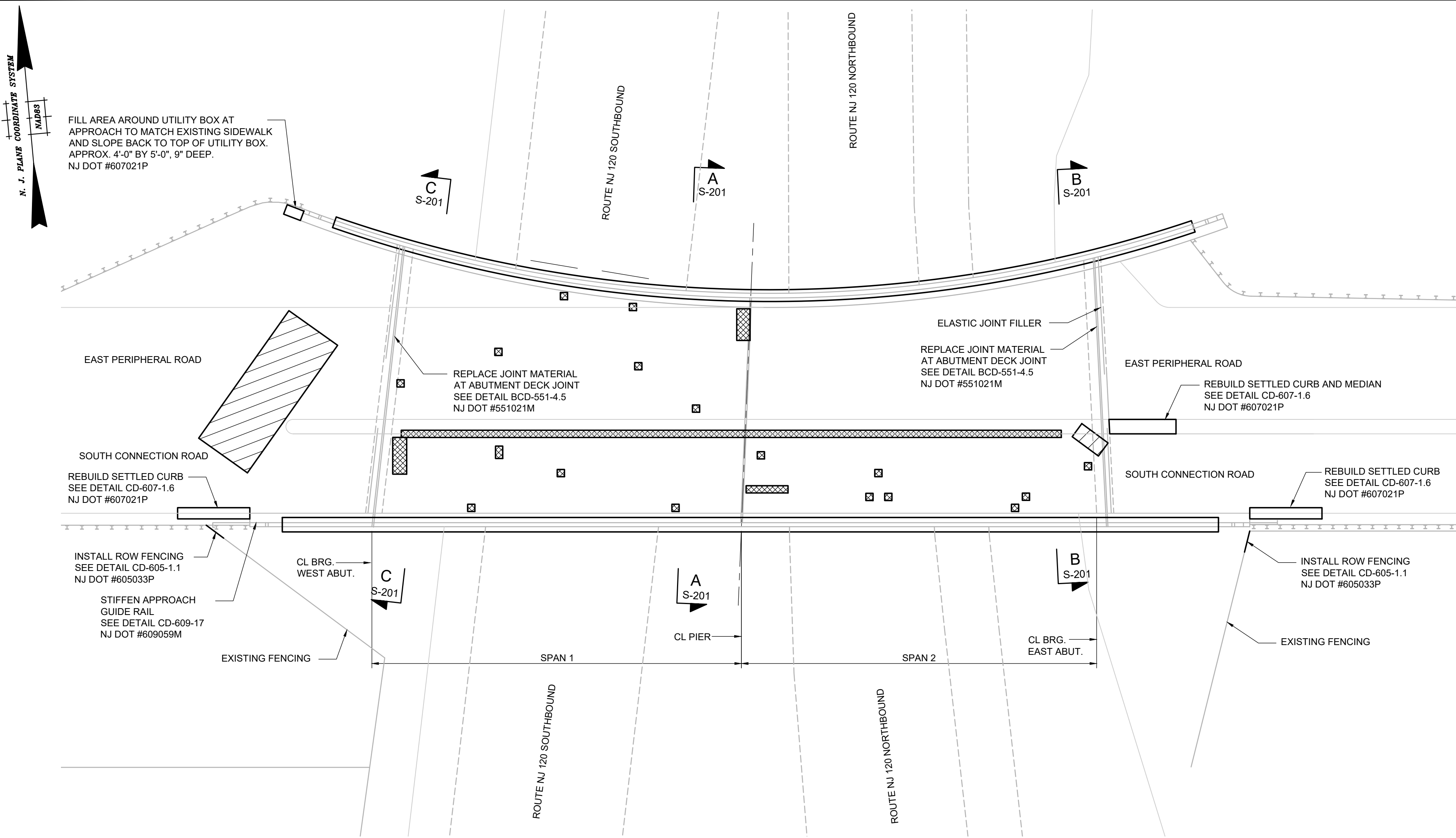
SCALE: 1" = 1000'

LENGTH OF SOUTH CONNECTOR PROJECT = 255 LIN. FT.
LENGTH OF NORTH CONNECTOR PROJECT = 245 LIN. FT.
LENGTH OF PEDESTRIAN BRIDGE PROJECT = 795 LIN. FT.

**2019 NEW JERSEY DEPARTMENT OF TRANSPORTATION STANDARD SPECIFICATIONS
FOR ROAD AND BRIDGE CONSTRUCTION WITH AMENDMENTS TO GOVERN**

[illegible]

1" = 1000'-0"



LEGEND

- APPROXIMATE LIMITS OF EXISTING SPALLS TO BE REPAIRED
SEE DETAIL BCD-551-1.1
SHALL BE PAID FOR UNDER ITEM NJ DOT #551006M
- APPROXIMATE LIMITS OF EXISTING CRACKS TO BE REPAIRED
SEE DRAWING S-401.
SHALL BE PAID FOR UNDER ITEM NJ DOT #4010302

NOTES:

- THE INFORMATION PRESENTED HEREON IS FOR INFORMATIONAL PURPOSES ONLY AND IS NOT GUARANTEED TO BE CORRECT. BIDDERS SHALL VISIT THE SITE BEFORE SUBMITTING BIDS TO ASCERTAIN THE EXTENT OF WORK.
- NO DISCOVERY OF UNDERGROUND UTILITIES HAS BEEN PERFORMED WITHIN THE PROJECT LIMITS. PRIOR TO THE COMMENCEMENT OF ANY CONSTRUCTION ACTIVITIES, THE CONTRACTOR SHALL REQUEST A MARK-OUT OF EXISTING UTILITIES THROUGH THE NEW JERSEY ONE-CALL SYSTEM AND PERFORM ALL UTILITY COORDINATION FOR THE PROJECT IN ACCORDANCE WITH SUBSECTION 105.07 OF THE SPECIAL PROVISIONS. DAMAGE IMPOSED TO EXISTING UTILITY FACILITIES BY THE CONTRACTOR SHALL BE REPAIR BY THE CONTRACTOR AT NOT ADDITIONAL COST TO THE STATE.
- ORIGINAL CONSTRUCTION DRAWINGS ARE AVAILABLE FOR THE STRUCTURE.
- PROVIDE THE RE WITH THE MEANS FOR ACCESSING ALL AREAS OF THE BRIDGE FOR DELINEATING THE REPAIRS AND INSPECTING WORK. ALL COSTS ASSOCIATED WITH PROVIDING THE RE WITH ACCESS TO ALL AREAS OF THE BRIDGE SHALL BE INCLUDED IN THE VARIOUS PAY ITEMS IN THE PROJECT.
- EXISTING MEDIAN AND CURB TO BE DEMOLISHED, APPROXIMATELY 6'-0" IN LENGTH, AND REBUILT. PROPOSED MEDIAN AND CURBS ARE TO BE SLOPED TO MATCH EXISTING MEDIAN AND CURB AT THE ELASTIC JOINT.
- TEMPORARY SHIELDING MAY BE REQUIRED TO PROTECT NJ ROUTE 120. ALL COSTS THEREOF SHALL BE INCLUDED IN THE VARIOUS REPAIR ITEMS.

DOT ITEM NO.	PAY ITEM NO.	TO BE CONSTRUCTED	UNIT	PLAN SHEET TOTALS	IF & WHERE DIRECTED	AS-BUILT QUANTITY
4010302	6	SEALING CRACKS IN HMA SURFACE COURSE	LF	200		
504036P	7	EPOXY WATERPROOFING	SY	38		
605033P	8	CHAIN-LINK FENCE, PVC-COATED STEEL, 8' HIGH	LF	12		
551006M	9	CONCRETE DECK REPAIR, TYPE B	SF	125		
552003M	10	PRESSURE INJECTION, CONCRETE CRACKS	LF	20		
553003M	11	SPALL REPAIRS	SF	875		
609059M	12	APPROACH GUIDE RAIL TRANSITION TL-3	U	1		
551021M	13	HEADER RECONSTRUCTION	LF	130		
607021P	14	9"x18" CONCRETE VERTICAL CURB	LF	95		
610003M	15	TRAFFIC STRIPES, 4"	LF	1130		



INSTALL ROW FENCING AT SOUTHWEST AND SOUTHEAST BRIDGE CORNERS TO PREVENT PEDESTRIAN ACCESS TO NJ 120



REPAIR DEEP SPALLS AT SPAN 2 IN EASTBOUND LANES NEAR PIER DECK JOINT



SEAL THE CRACK IN TOP OF DECK



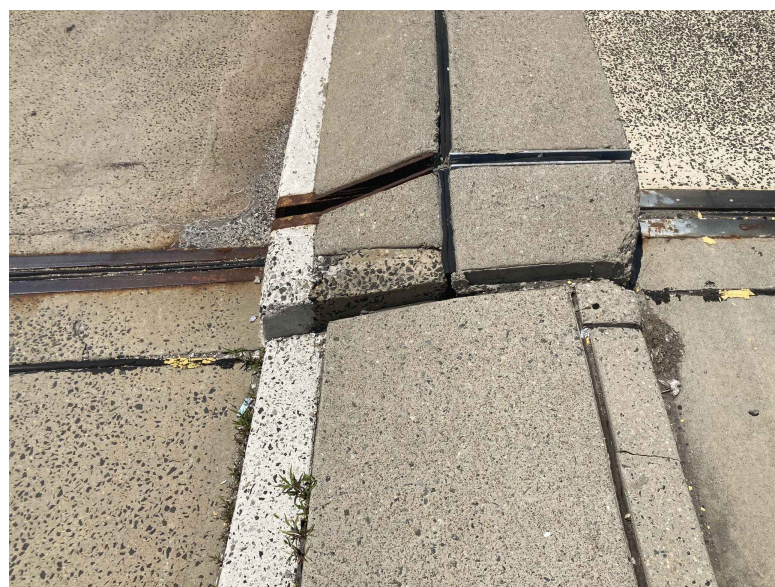
REPAIR THE SPALLS IN THE TOP OF DECK AND ABUTMENT DECK JOINT HEADERS



SEAL THE WIDE CRACKS IN THE WEST APPROACH ROADWAY PAVEMENT



REPAIR SPALLED CURBS



REBUILD THE SETTLED MEDIAN AND CURBS IN THE EAST APPROACH



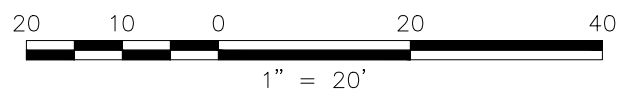
FILL AREA AROUND UTILITY BOX AT NORTHWEST APPROACH



REBUILD THE SETTLED SOUTHWEST AND SOUTHEAST APPROACH CURBS



REPLACE SETTLED/TORN JOINT MATERIAL AT BOTH ABUTMENT DECK JOINTS



REV. / ISSUE	DATE	DESCRIPTION

CONSULTANT

ORIENTATION / KEY PLAN

CLIENT

STATE OF NEW JERSEY

NEW JERSEY SPORTS AND EXPOSITION AUTHORITY

PS&S PAULUS, SOKOLOWSKI AND SARTOR, LLC.

3 MOUNTAINVIEW ROAD
P.O. BOX 4039
WARREN, NJ 07059
PHONE: (732) 560-9700

CERTIFICATE OF AUTHORIZATION NO. 24GA28032700

ALL DIMENSIONS MUST BE VERIFIED BY THE CONTRACTOR. NOTIFY PAULUS, SOKOLOWSKI AND SARTOR, LLC. OF ANY CONFLICTS, ERRORS, AMBIGUITIES OR DISCREPANCIES IN THE CONTRACT DRAWINGS OR SPECIFICATIONS BEFORE PROCEEDING WITH CONSTRUCTION.

ALL DIMENSIONS SHALL BE AS NOTED IN WORDS OR NUMBERS ON THE CONTRACT DRAWINGS. DO NOT SCALE THE DRAWINGS TO DETERMINE DIMENSIONS.

THESE CONTRACT DRAWINGS CONTAIN DATA INTENDED SPECIFICALLY FOR THE NOTED PROJECT AND CLIENT. THEY ARE NOT INTENDED FOR USE ON EXTENSIONS OF THE PROJECT OR FOR REUSE ON ANY OTHER PROJECT.

THE COPYING AND/OR MODIFICATION OF THIS DOCUMENT OR ANY PORTION THEREOF WITHOUT THE WRITTEN PERMISSION OF PAULUS, SOKOLOWSKI AND SARTOR, LLC. IS PROHIBITED.

UNLESS THESE DRAWINGS ARE SPECIFICALLY DESIGNATED AS "CONSTRUCTION ISSUE", THESE DRAWINGS SHALL NOT BE USED FOR CONSTRUCTION OR IMPROVEMENTS DEPICTED HEREIN. CONTRACTORS SHALL NOTIFY THE DESIGN ENGINEER TO OBTAIN CONSTRUCTION DOCUMENTS.

COPYRIGHT 2024 PAULUS, SOKOLOWSKI AND SARTOR, LLC. - ALL RIGHTS RESERVED.

PROJECT **NJSEA MEADOWLANDS STRUCTURE NO. 4900-001 SOUTH CONNECTOR ROAD AND RAMP "R" OVER NJ 120**

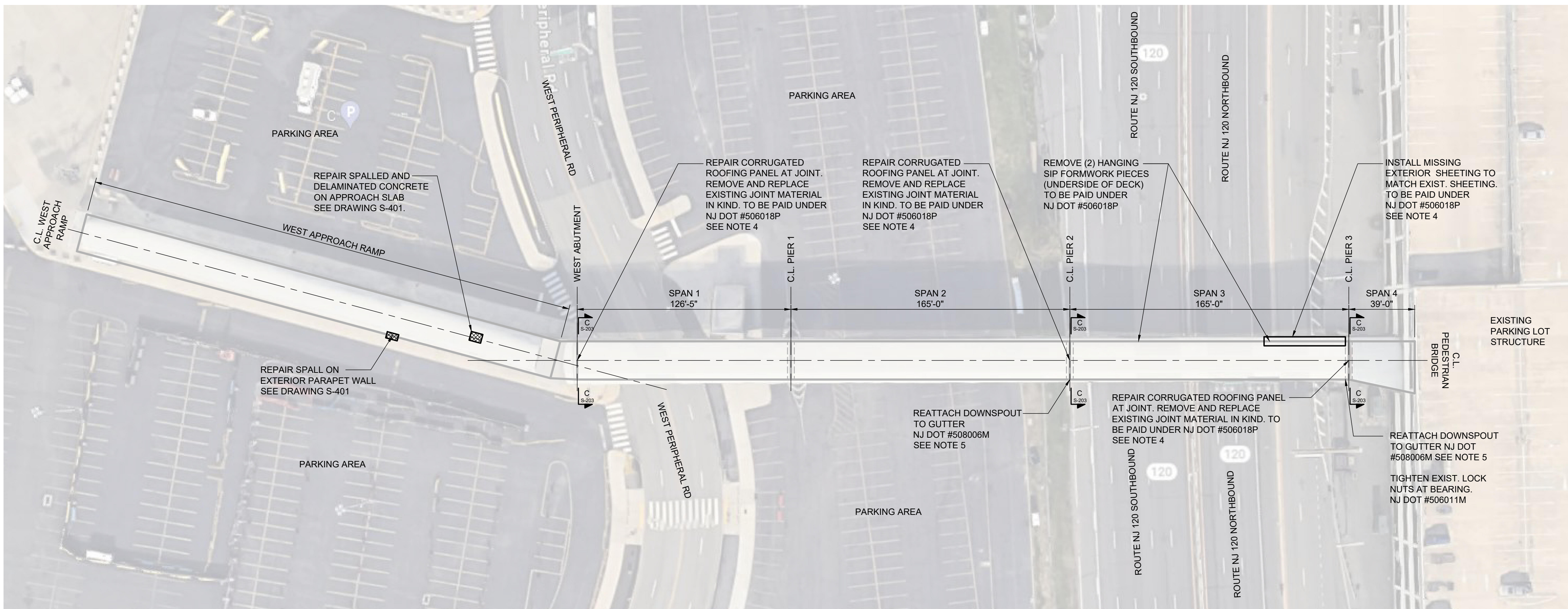
THE BOROUGH OF EAST RUTHERFORD
BERGEN COUNTY, NEW JERSEY

SHEET TITLE

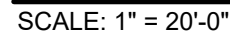
SOUTH CONNECTOR GENERAL PLAN & ELEVATION BRIDGE REPAIRS

PROJECT NO.: 00823.0040 DRAWN BY: RD
SCALE: AS SHOWN CHECKED BY: JB
DATE: 03/12/2025 SHEET 4 OF 20
SHEET NO.

S-101



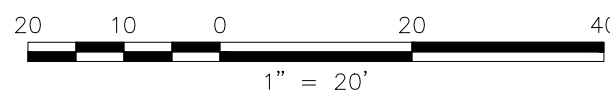
SCALE: 1" = 20'-0"



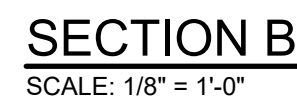
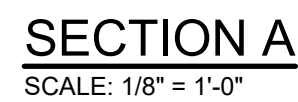
1. SEE SHEET S-203 FOR REPAIR LOCATIONS

APPROXIMATE LIMITS OF EXISTING SPALLS TO BE REPAIRED
SEE DRAWING S-401

1. THE INFORMATION PRESENTED HEREON IS FOR INFORMATIONAL PURPOSES ONLY AND IS NOT GUARANTEED TO BE CORRECT. BIDDERS SHALL VISIT THE SITE BEFORE SUBMITTING BIDS TO ASCERTAIN THE EXTENT OF WORK.
2. NO DISCOVERY OF UNDERGROUND UTILITIES HAS BEEN PERFORMED WITHIN THE PROJECT LIMITS. PRIOR TO THE COMMENCEMENT OF ANY CONSTRUCTION ACTIVITIES, THE CONTRACTOR SHALL REQUEST A MARK-OUT OF EXISTING UTILITIES THROUGH THE NEW JERSEY ONE-CALL SYSTEM AND PERFORM ALL UTILITY COORDINATION FOR THE PROJECT IN ACCORDANCE WITH SUBSECTION 105.07 OF THE SPECIAL PROVISIONS. DAMAGE IMPOSED TO EXISTING UTILITY FACILITIES BY THE CONTRACTOR SHALL BE REPAIR BY THE CONTRACTOR AT NOT ADDITIONAL COST TO THE STATE.
3. PROVIDE THE RE WITH THE MEANS FOR ACCESSING ALL AREAS OF THE BRIDGE FOR DELINEATING THE REPAIRS AND INSPECTING WORK. ALL COSTS ASSOCIATED WITH PROVIDING THE RE WITH ACCESS TO ALL AREAS OF THE BRIDGE SHALL BE INCLUDED IN THE VARIOUS PAY ITEMS IN THE PROJECT.
4. TEMPORARY SHIELDING MAY BE REQUIRED TO PROTECT NJ ROUTE 120. ALL COSTS THEREOF SHALL BE INCLUDED IN THE VARIOUS REPAIR ITEMS.

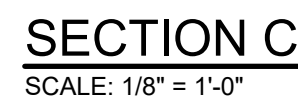
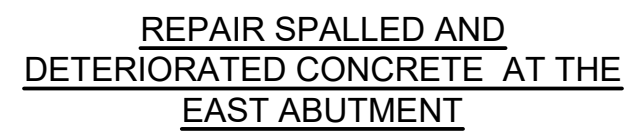


S-103

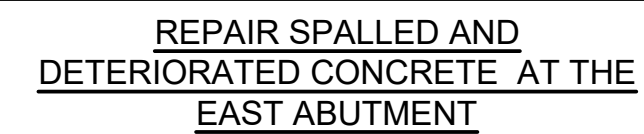


1. REMOVE DEBRIS FROM ABUTMENT BRIDGE SEATS AND APPLY EPOXY WATERPROOFING NJ DOT #504036P.

NOTE: DAMAGES TO THE EAST ABUTMENT CONCRETE EXHIBITS SEVERE SPALLING. SEE PHOTOGRAPHS BELOW



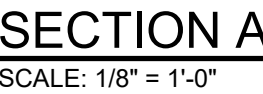
1. REMOVE DEBRIS FROM ABUTMENT BRIDGE SEATS AND APPLY EPOXY WATERPROOFING NJ DOT #504036P.



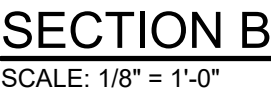
APPROXIMATE LIMITS OF EXISTING CRACKS TO BE REPAIRED
SEE DRAWING S-401

1. THE INFORMATION PRESENTED HEREON IS FOR INFORMATIONAL PURPOSES ONLY AND IS NOT GUARANTEED TO BE CORRECT. BIDDERS SHALL VISIT THE SITE BEFORE SUBMITTING BIDS TO ASCERTAIN THE EXTENT OF WORK.
2. SEE CONTRACT DRAWING S-401 FOR SPALL AND CRACK CONCRETE REPAIRS.

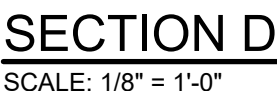
S-201



1. REMOVE DEBRIS FROM ABUTMENT BRIDGE SEATS AND APPLY EPOXY WATERPROOFING NJ DOT #504036P.



1. REMOVE DEBRIS FROM ABUTMENT BRIDGE SEATS AND APPLY EPOXY WATERPROOFING NJ DOT #504036P.



APPROXIMATE LIMITS OF EXISTING SPALLS TO BE REPAIRED
SEE DRAWING S-401

1. THE INFORMATION PRESENTED HEREON IS FOR INFORMATIONAL PURPOSES ONLY AND IS NOT GUARANTEED TO BE CORRECT. BIDDERS SHALL VISIT THE SITE BEFORE SUBMITTING BIDS TO ASCERTAIN THE EXTENT OF WORK.
2. SEE CONTRACT DRAWING S-401 FOR SPALL AND CRACK CONCRETE REPAIRS.

STATE OF NEW JERSEY

PAULUS, SOKOLOWSKI
AND SARTOR, LLC.

3 MOUNTAINVIEW ROAD
P.O. BOX 4039
WARREN, NJ 07059
PHONE: (732) 560-9700

CERTIFICATE OF AUTHORIZATION NO. 24GA28032700

ALL DIMENSIONS MUST BE VERIFIED BY THE CONTRACTOR. NOTIFY PAULUS, SOKOLOWSKI AND SARTOR, LLC. OF ANY CONFLICTS, ERRORS, AMBIGUITIES OR DISCREPANCIES IN THE CONTRACT DRAWINGS OR SPECIFICATIONS BEFORE PROCEEDING WITH CONSTRUCTION.

ALL DIMENSIONS SHALL BE AS NOTED IN WORDS OR NUMBERS ON THE CONTRACT DRAWINGS. DO NOT SCALE THE DRAWINGS TO DETERMINE DIMENSIONS.

THESE CONTRACT DRAWINGS CONTAIN DATA INTENDED SPECIFICALLY FOR THE NOTED PROJECT AND CLIENT. THEY ARE NOT INTENDED FOR USE ON EXTENSIONS OF THIS PROJECT OR FOR REUSE ON ANY OTHER PROJECT.

THE COPYING AND/OR MODIFICATION OF THIS DOCUMENT OR ANY PORTION THEREOF WITHOUT THE WRITTEN PERMISSION OF PAULLS, SOKOLOWSKI AND SARTOR, LLC. IS PROHIBITED.

UNLESS THESE DRAWINGS ARE SPECIFICALLY DESIGNATED AS "CONSTRUCTION ISSUE", THESE DRAWINGS SHALL NOT BE USED FOR CONSTRUCTION OR IMPROVEMENTS DEPICTED HEREIN. CONTRACTORS SHALL NOTIFY THE DESIGN ENGINEER TO OBTAIN CONSTRUCTION DOCUMENTS.

COPYRIGHT 2024 PAULUS, SOKOŁOWSKI AND SARTOR, LLC. - ALL RIGHTS RESERVED

PROJECT

NJSEA
MEADOWLANDS
STRUCTURE NO. 4900-002
WITH CONNECTOR ROAD
RAMP "F" OVER NJ 120

THE BOROUGH OF EAST RUTHERFORD
BERGEN COUNTY, NEW JERSEY

NORTH CONNECTOR SECTIONS BRIDGE REPAIRS

PROJECT NO.: 00823.0040

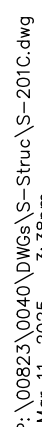
DRAWN BY: R

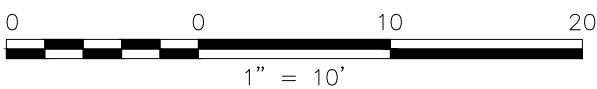
SCALE: AS SHOWN

CHECKED BY: J

DATE: 03/12/2025

S-202

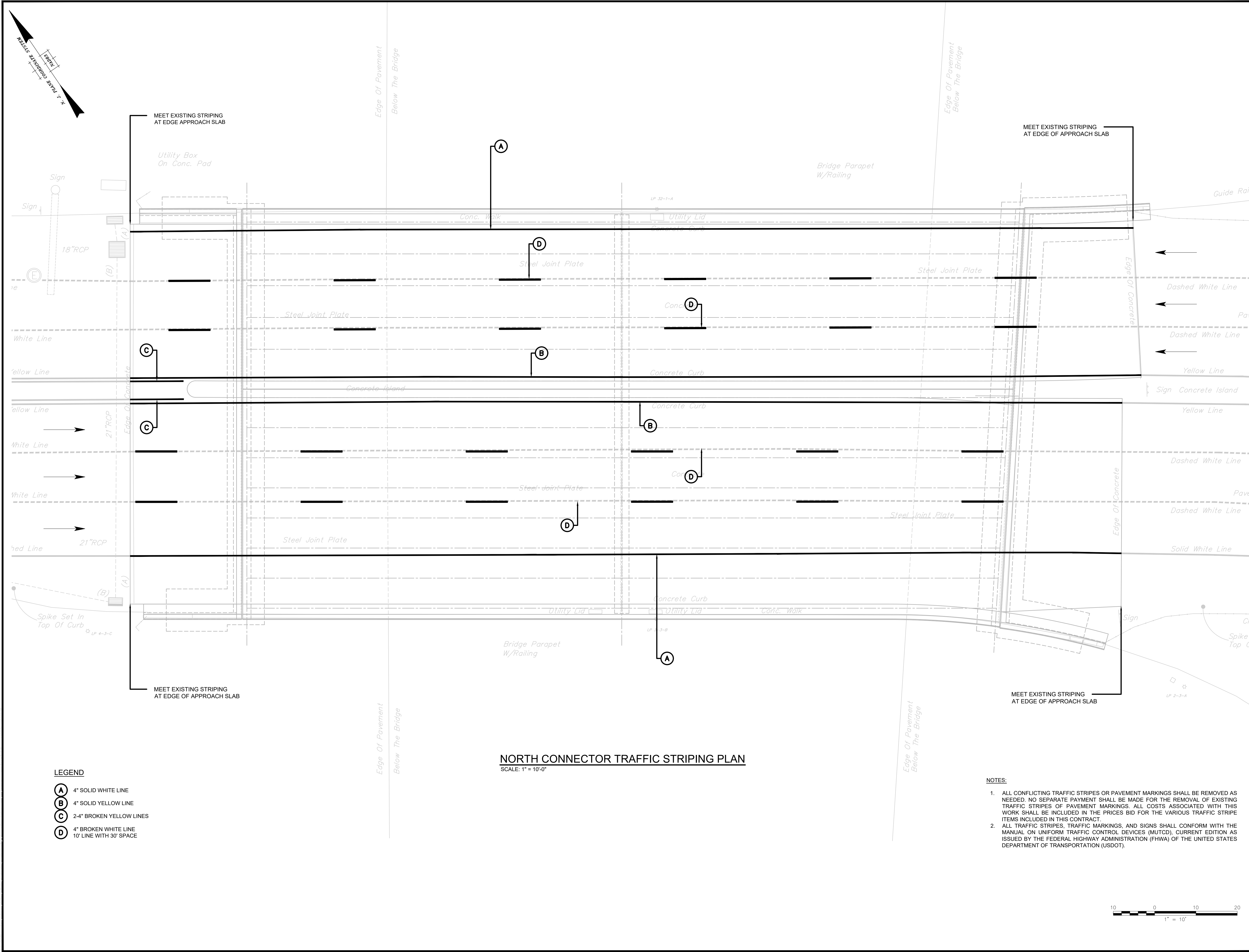




PROJECT NO.: 00823.0040	DRAWN BY: RD
SCALE: AS SHOWN	CHECKED BY: JB
DATE: 03/12/2025	SHEET 10 OF 20
SHEET NO.	
S-301	

S-301

P:\0823\0404\DWG\SS-Struct\SS-301B.dwg
Mar 11, 2025 3:47pm



LEGEND

- (A) 4" SOLID WHITE LINE
- (B) 4" SOLID YELLOW LINE
- (C) 2-4" BROKEN YELLOW LINES
- (D) 4" BROKEN WHITE LINE
10' LINE WITH 30' SPACE

NORTH CONNECTOR TRAFFIC STRIPING PLAN

SCALE: 1" = 10'-0"

NOTES:

- ALL CONFLICTING TRAFFIC STRIPES OR PAVEMENT MARKINGS SHALL BE REMOVED AS NEEDED. NO SEPARATE PAYMENT SHALL BE MADE FOR THE REMOVAL OF EXISTING TRAFFIC STRIPES OR PAVEMENT MARKINGS. ALL COSTS ASSOCIATED WITH THIS WORK SHALL BE INCLUDED IN THE PRICES BID FOR THE VARIOUS TRAFFIC STRIPE ITEMS INCLUDED IN THIS CONTRACT.
- ALL TRAFFIC STRIPES, TRAFFIC MARKINGS, AND SIGNS SHALL CONFORM WITH THE MANUAL ON UNIFORM TRAFFIC CONTROL DEVICES (MUTCD), CURRENT EDITION AS ISSUED BY THE FEDERAL HIGHWAY ADMINISTRATION (FHWA) OF THE UNITED STATES DEPARTMENT OF TRANSPORTATION (USDOT).

REV. / ISSUE	DATE	DESCRIPTION

CONSULTANT

ORIENTATION / KEY PLAN

CLIENT

STATE OF NEW JERSEY
NEW JERSEY SPORTS AND
EXPOSITION AUTHORITY



PAULUS, SOKOLOWSKI
AND SARTOR, LLC.

3 MOUNTAINVIEW ROAD
P.O. BOX 4039
WARREN, NJ 07059
PHONE: (732) 560-9700

CERTIFICATE OF AUTHORIZATION NO. 24GA28032700

ALL DIMENSIONS MUST BE VERIFIED BY THE CONTRACTOR. NOTIFY PAULUS, SOKOLOWSKI AND SARTOR, LLC OF ANY CONFLICTS, ERRORS, AMBIGUITIES OR DISCREPANCIES IN THE CONTRACT DRAWINGS OR SPECIFICATIONS BEFORE PROCEEDING WITH CONSTRUCTION.
ALL DIMENSIONS SHALL BE AS NOTED IN WORDS OR NUMBERS ON THE CONTRACT DRAWINGS. DO NOT SCALE THE DRAWINGS TO DETERMINE DIMENSIONS.

THESE CONTRACT DRAWINGS CONTAIN DATA INTENDED SPECIFICALLY FOR THE NOTED PROJECT AND CLIENT. THEY ARE NOT INTENDED FOR USE ON EXTENSIONS OF THE PROJECT OR FOR ANY OTHER PROJECT.
THE COPYING AND/OR MODIFICATION OF THIS DOCUMENT OR ANY PORTION THEREOF WITHOUT THE WRITTEN PERMISSION OF PAULUS, SOKOLOWSKI AND SARTOR, LLC IS PROHIBITED.

UNLESS THESE DRAWINGS ARE SPECIFICALLY DESIGNATED AS "CONSTRUCTION ISSUE", THESE DRAWINGS SHALL NOT BE USED FOR CONSTRUCTION OR IMPROVEMENTS DEPICTED HEREIN. CONTRACTORS SHALL NOTIFY THE DESIGN ENGINEER TO OBTAIN CONSTRUCTION DOCUMENTS.

COPYRIGHT 2024 PAULUS, SOKOLOWSKI AND SARTOR, LLC. - ALL RIGHTS RESERVED.

PROJECT

NJSEA
MEADOWLANDS
STRUCTURE NO. 4900-002
NORTH CONNECTOR ROAD
AND RAMP "F" OVER NJ 120

THE BOROUGH OF EAST RUTHERFORD
BERGEN COUNTY, NEW JERSEY

SHEET TITLE

NORTH CONNECTOR
TRAFFIC STRIPING
PLAN

PROJECT NO.: 00823.0040

SCALE: AS SHOWN

DATE: 03/12/2025

SHEET NO.

DRAWN BY: RD

CHECKED BY: JB

SHEET 11 OF 20

S-302



1. EXISTING WEB OF SIDE DAM EXHIBITS LONGITUDINAL CRACK AT INTERFACE OF FLANGE/WEB AND/OR BOWED/DISTORTED WEB (TOTAL OF 15 LINEAR FOOT).
2. CONTRACTOR TO CUSTOM FABRICATE BENT PLATES. CUSTOM FABRICATED BENT PLATES SHALL BE BASED ON A FIELD VERIFICATION SURVEY. THE COST OF CUSTOM BENT PLATES AND SURVEY SHALL BE PAID FOR UNDER NJDOT #506018P.
3. ORIGINAL CONSTRUCTION DRAWINGS ARE AVAILABLE FOR THIS STRUCTURE.



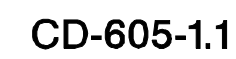
1. REMOVE DEFECTIVE CONCRETE AS REQUIRED.
2. SAWCUT 1" DEEP AROUND PERIMETER OF VOID. REMOVE REMAINING CONCRETE WITHIN CUT LINES.
3. BLAST CLEAN THE SURFACE AND COAT ALL EXPOSED REBARS WITH SIKA ARMATEC-110 OR APPROVED EQUAL.
4. IF THE THICKNESS OF THE REPLACEMENT CONCRETE IS EQUAL TO OR GREATER THAN 3", INSTALL 1/2" DIA. STAINLESS STEEL ANCHOR PINS IN CONCRETE @12" O.C. EACH WAY AND THE GALVANIZED WIRE FABRIC 2X2-W0.9XW0.9 TO THE SAME.
5. APPLY REPAIRING MORTAR SIKATOP 122-PLUS (OR APPROVED EQUAL) IN MAXIMUM 1" LIFTS. MORTAR MUST BE SCRUBBED INTO SUBSTRATE.
6. FINISH TO MATCH ADJOINING SURFACES.
7. FOLLOW ALL MANUFACTURER'S RECOMMENDED PROCEDURES FOR SIKATOP 122-PLUS.



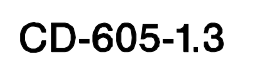
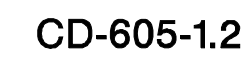
- DETAIL D**
THROUGH CRACK

1. CONCRETE SPALL REPAIRS SHALL BE PAID FOR UNDER PAY ITEM 553003M.
2. CONCRETE CRACK REPAIRS SHALL BE PAID FOR UNDER PAY ITEM 552003M.
3. SEALING CRACKS IN HMA SHALL BE PAID FOR UNDER PAY ITEM 4010302.

P:\00823\0040\DWGs\S-Struc\S-401.dwg
Apr 08, 2025 - 9:22am



CD-605-1.4



50
164

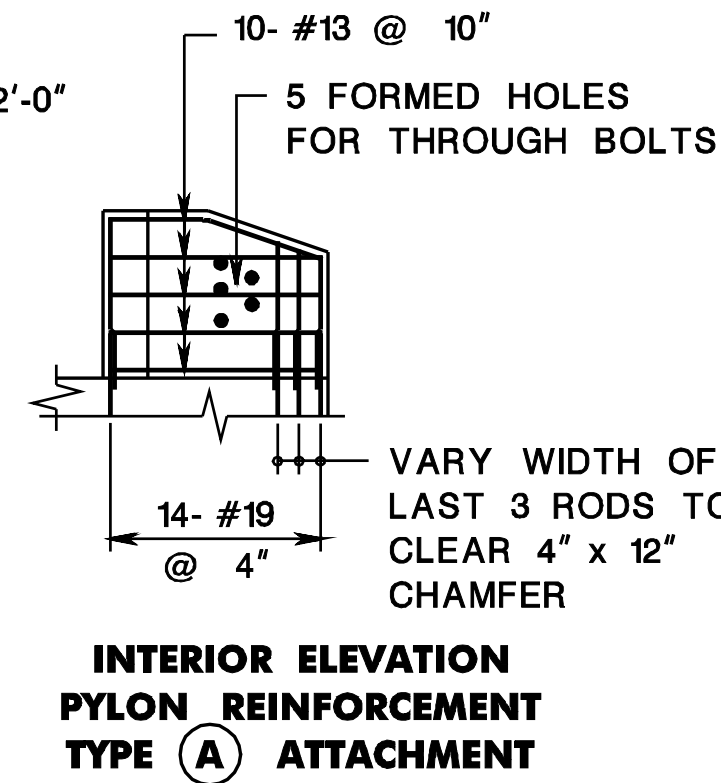
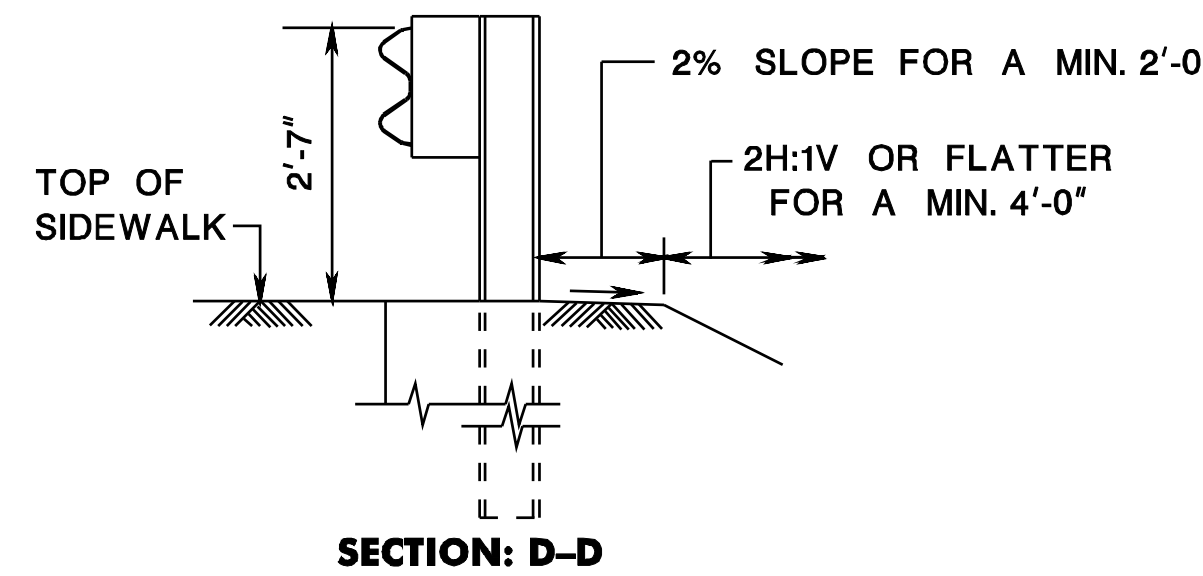
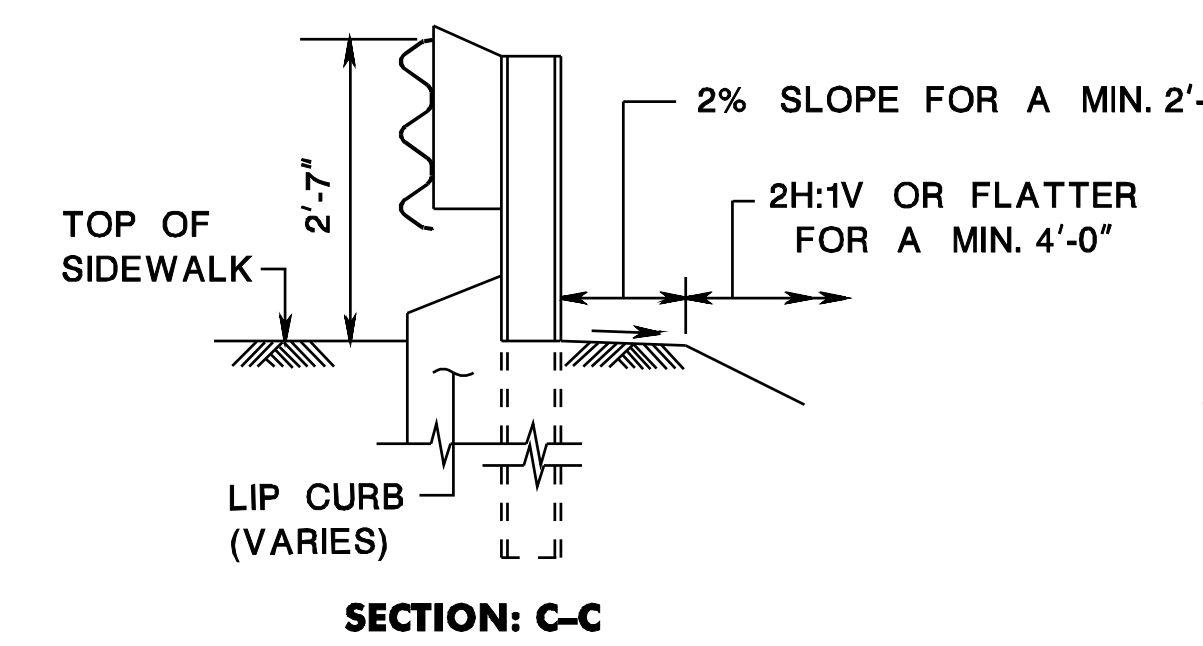
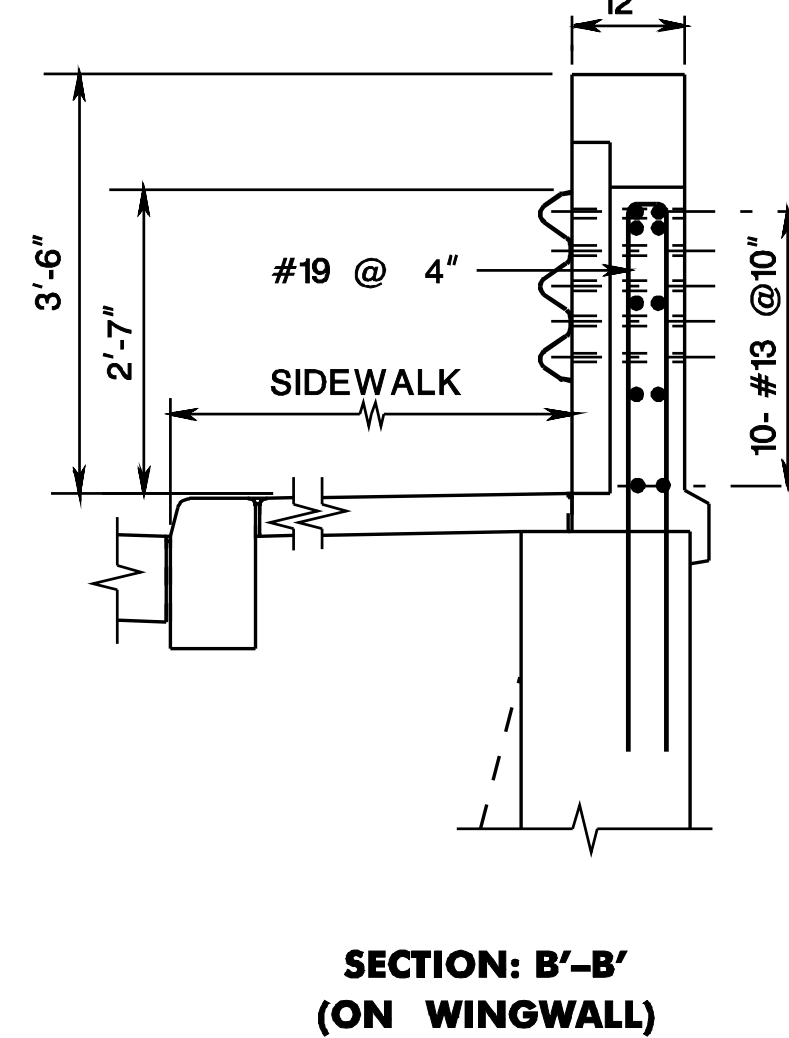
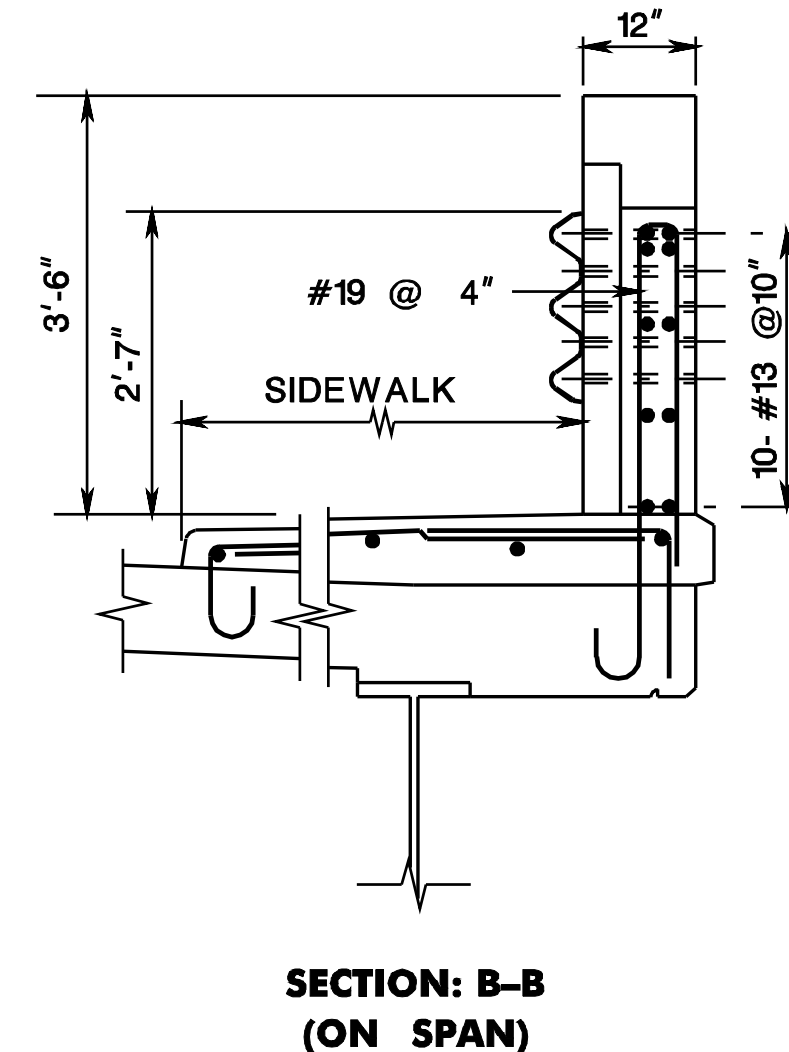
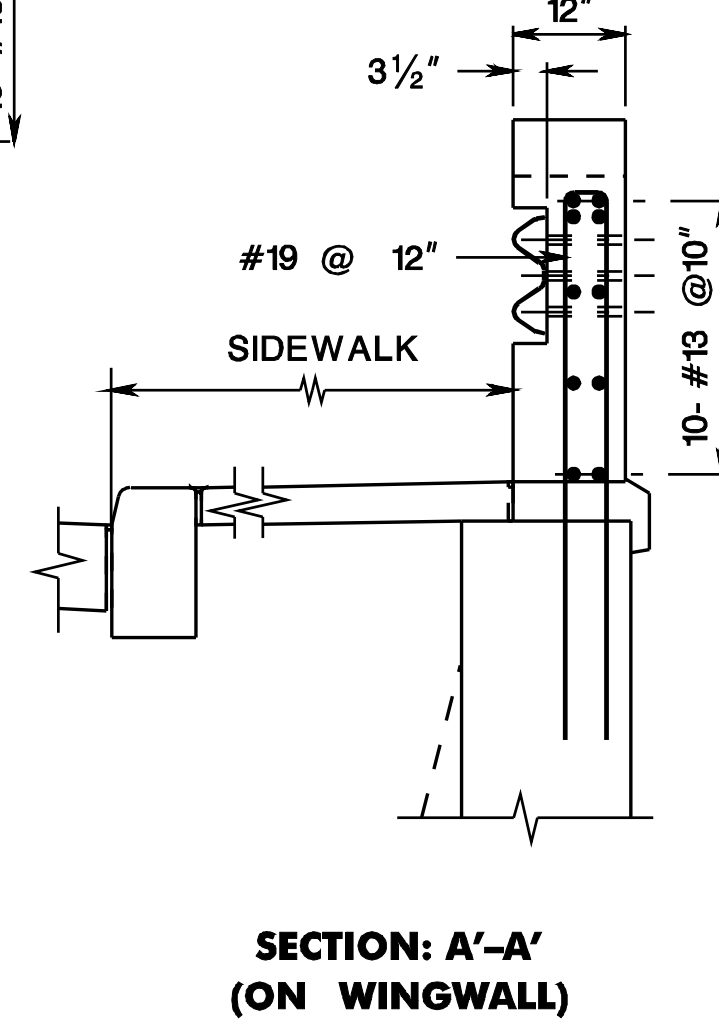
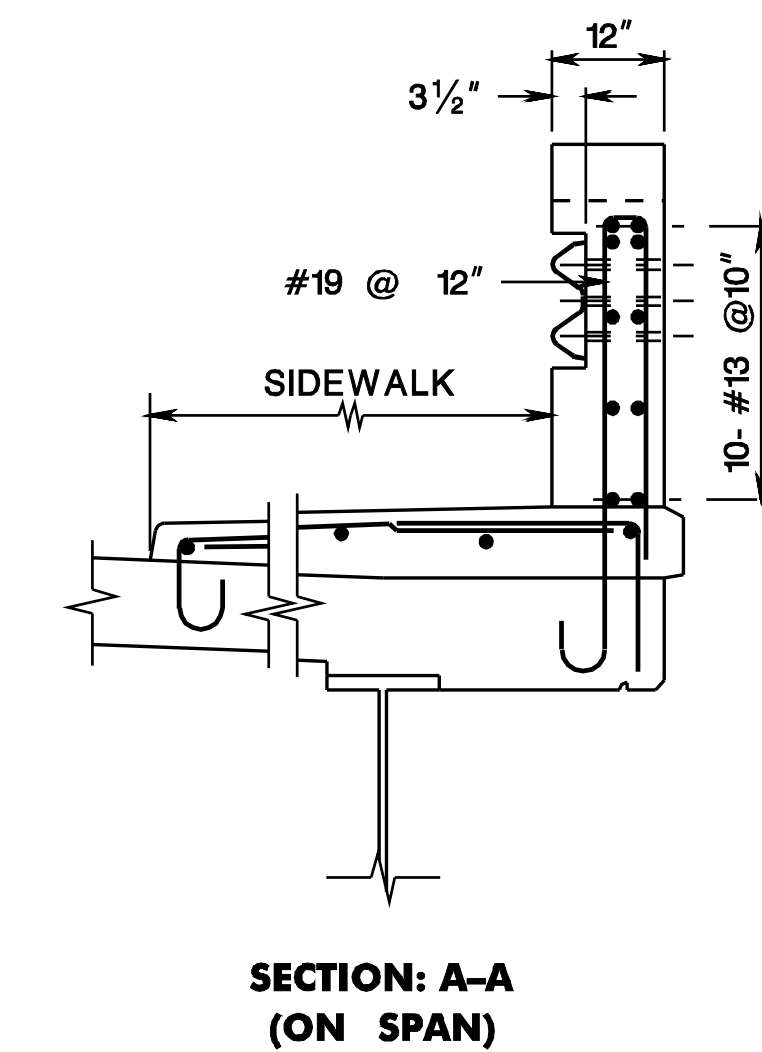
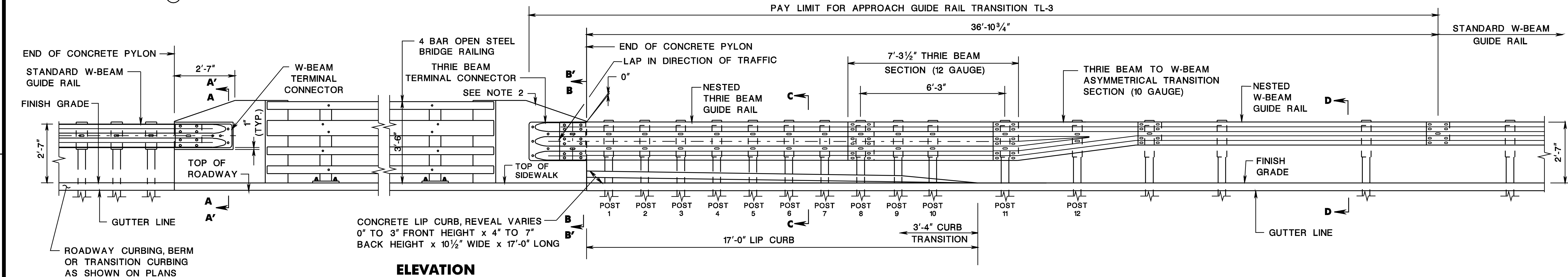
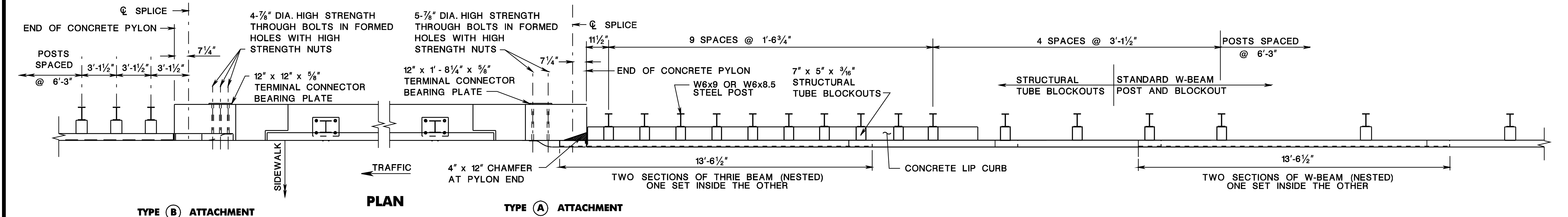
pen table= \\NJDOTPRIWS\Vsystem\NJDOT\TWS\Projects\NJDOTEng\pilot\TBLA\Roadway\Details_11x17.tbl

scale= 63.937297:1.000000

date= 19-JUL-2017 14:36

ID= TP2AVILL

BCD-02-REVISIONS TO CD-609-17
BCD-02-ORIGINAL SHEET



- NOTES:**
1. SEE CD-609-13 FOR ADDITIONAL NOTES AND DETAILS.
 2. THE TAPER MUST BE 5:1 OR FLATTER WITH 8:1 DESIRABLE. SEE BRIDGE PLANS FOR TAPER LENGTH.
 3. REINFORCEMENT STEEL IS IN METRIC UNITS.
 4. FOR ADDITIONAL PARAPET DETAILS AND DIMENSIONS, SEE BCD-507-11 & BCD-507-12.
 5. THIS DETAIL MAY BE USED FOR A 4'-2" HIGH, HEAVY TRUCK PARAPET AS SHOWN IN BCD-507-8.

BEAM GUIDE RAIL ATTACHMENTS

N.T.S.

CD-609-17

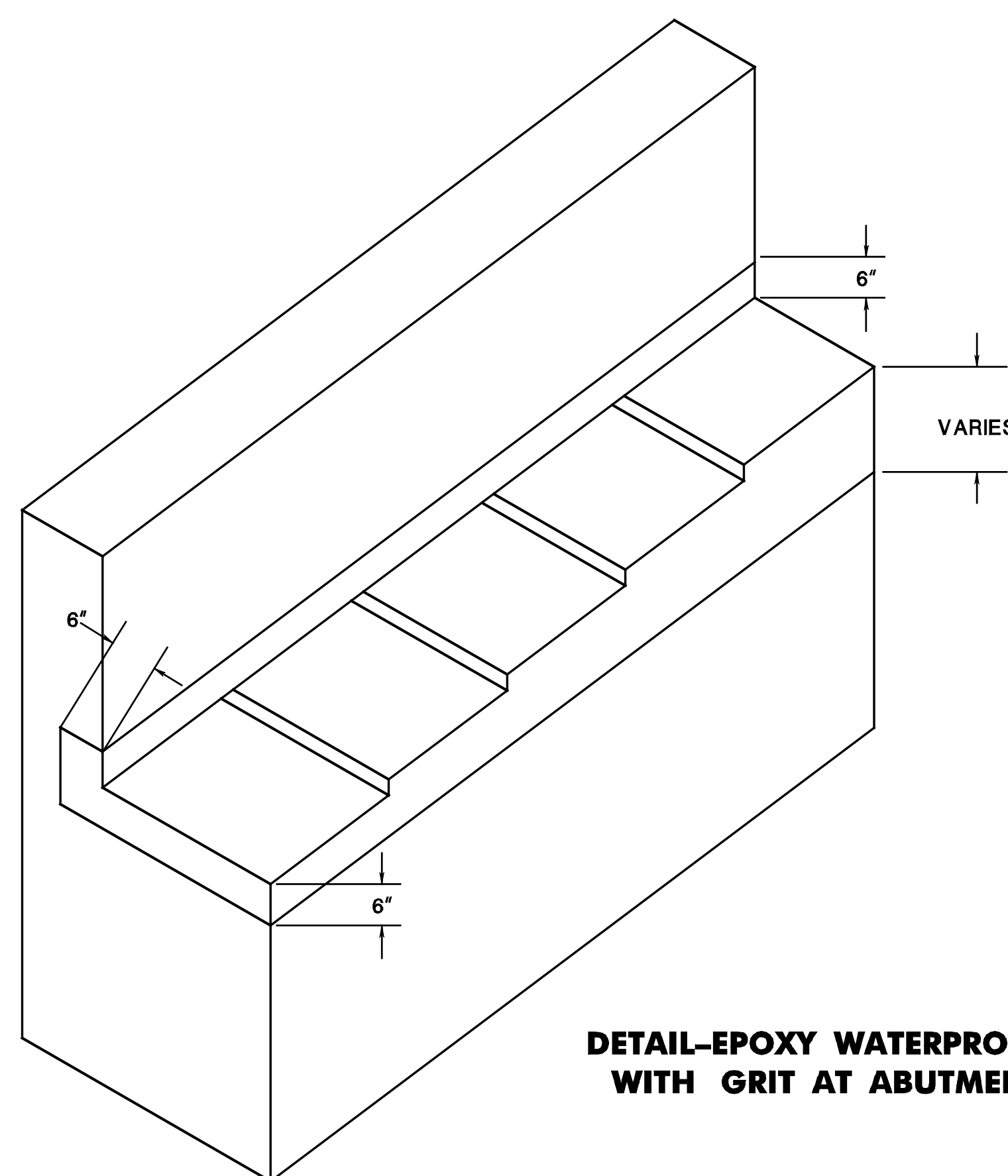
NEW JERSEY DEPARTMENT OF TRANSPORTATION

CONSTRUCTION DETAILS

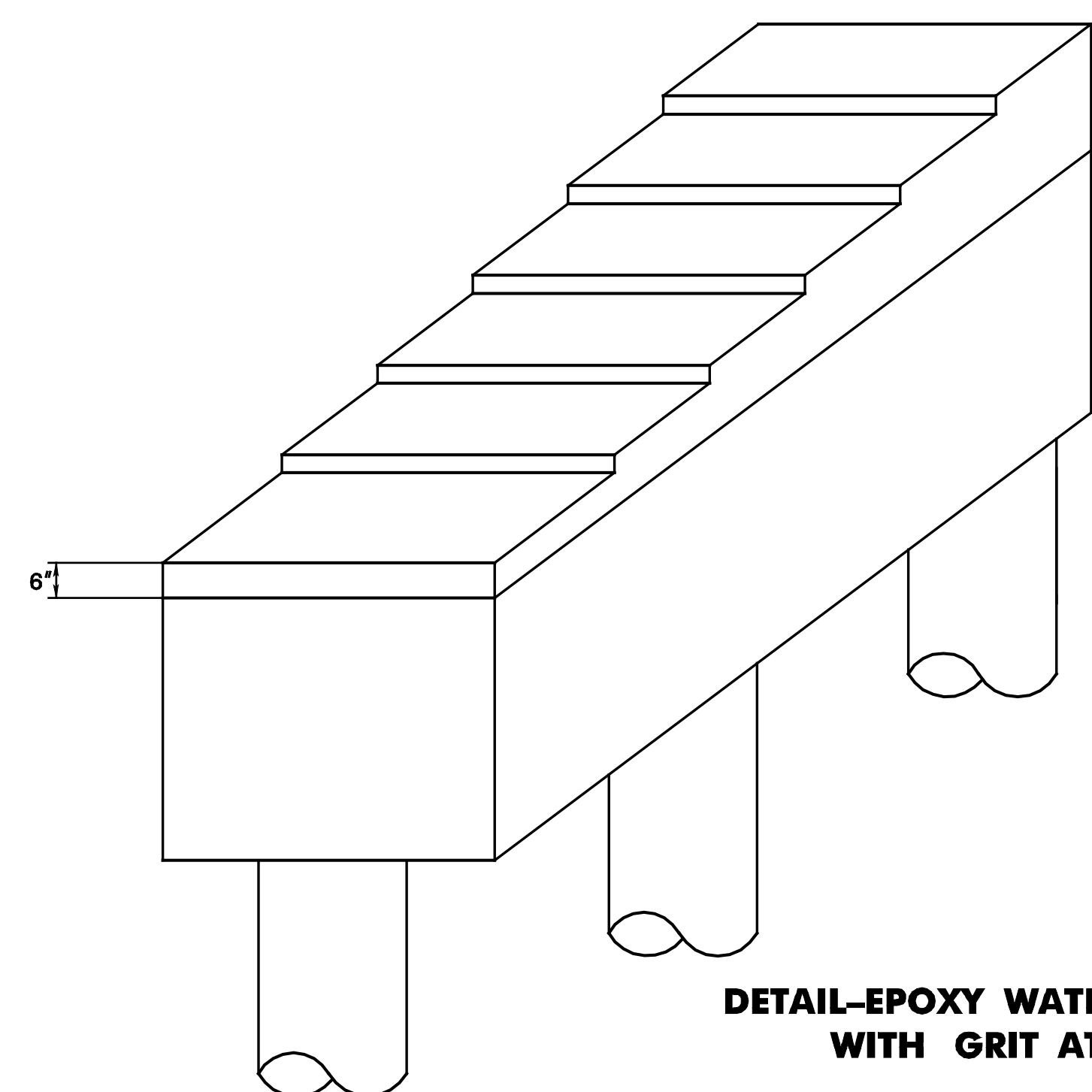
GUIDE RAIL ATTACHMENT - NEW CONSTRUCTION - DESIGN SPEED GREATER THAN 45 MPH (MASH TL-3) SIDEWALK WITH 4 BAR OPEN STEEL BRIDGE RAILING PARAPET

CD-609-17.1

78
164

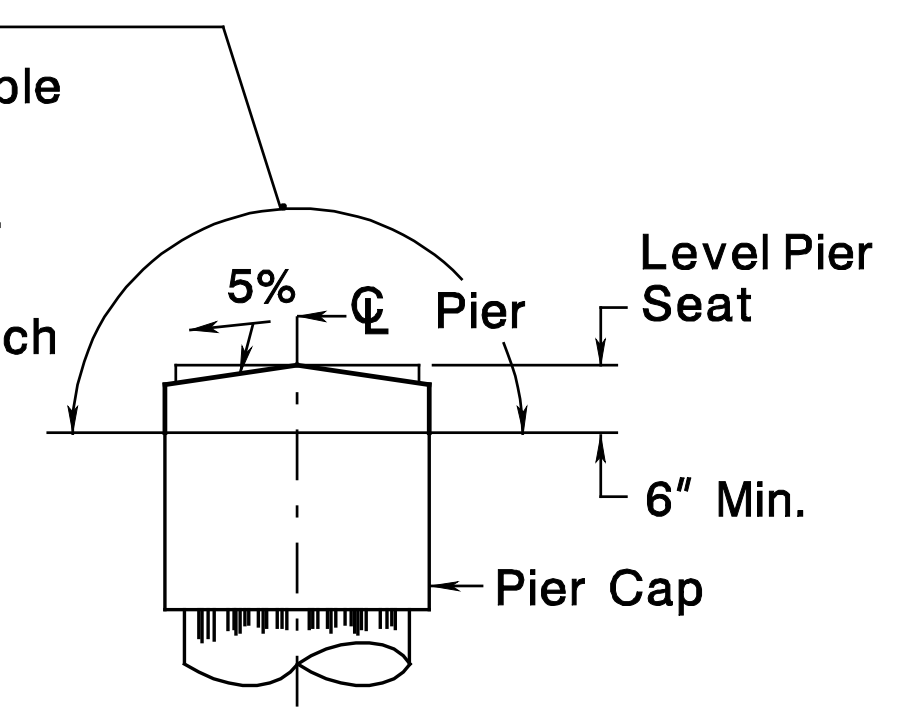


**DETAIL-EPOXY WATERPROOFING
WITH GRIT AT ABUTMENTS**

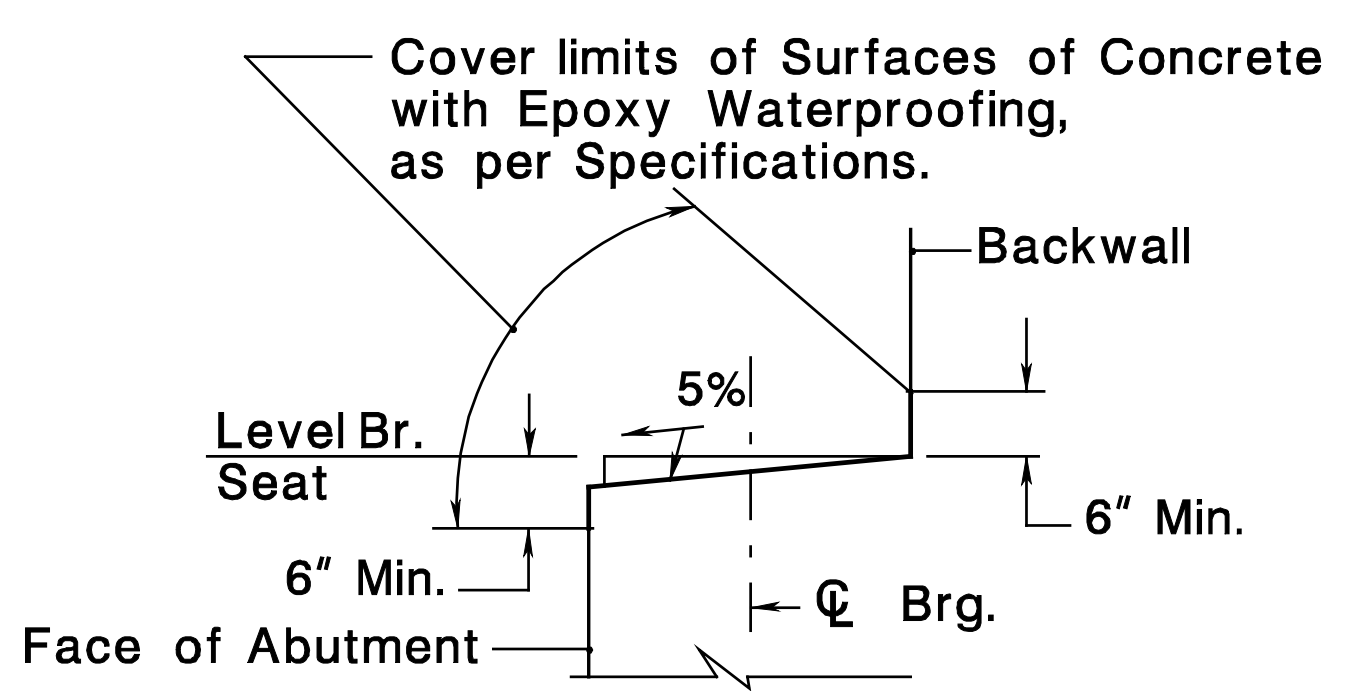


**DETAIL-EPOXY WATERPROOFING
WITH GRIT AT PIERS**

Epoxy Limits
1. Full length for Simple Span.
2. From end of Pier Cap to 2'-0" inside the centerline of each Fascia Stringer for continuous deck.



LIMITS AT PIER



LIMITS AT ABUTMENT

BCD-504-2.1

TYPICAL DETAILS

N.T.S.

NEW JERSEY DEPARTMENT OF TRANSPORTATION
BUREAU OF STRUCTURAL ENGINEERING

BRIDGE CONSTRUCTION DETAILS

BCD-504-2

127
164

pen table = \\NIDOTPRIWS\Ysystem\NIDOTWS\Projects\NIDOT\Eng\plot\TBLA\Non-Roadway\bridge-txc7runw.tbl
scale = 0.778076:1.000000
date = 28-SEP-2016 14:14
ID = TP2AVILL
file =

BCD-504-2.1 ORIGINAL SHEET

pen table= \\NJDOT\BRI\BRI\Projects\NJDOT\BRI\BRI\Non-Roadway\bridge-tx2\new.tbl

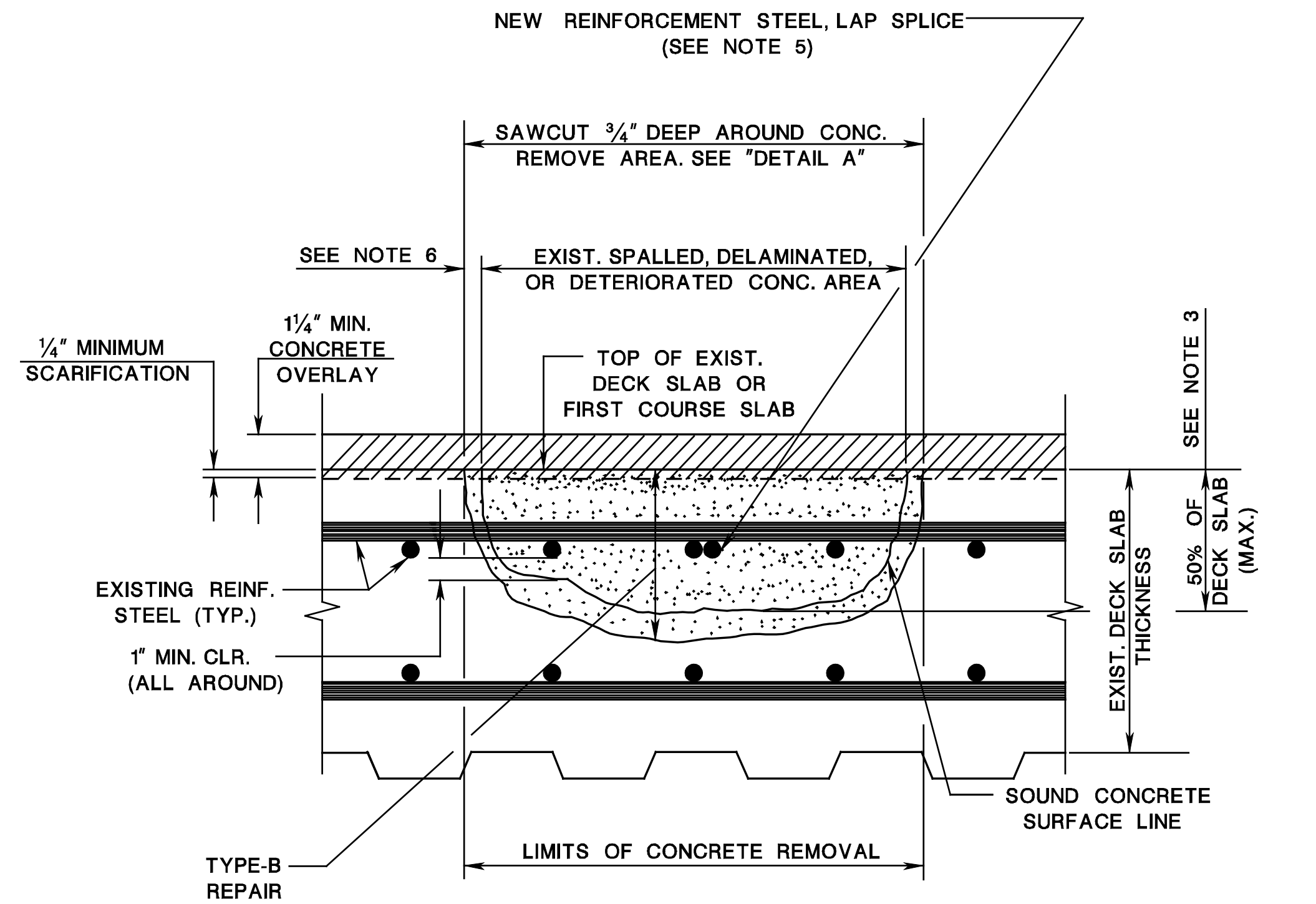
scale= 0.750000

date= 26-SEP-2016 14:15

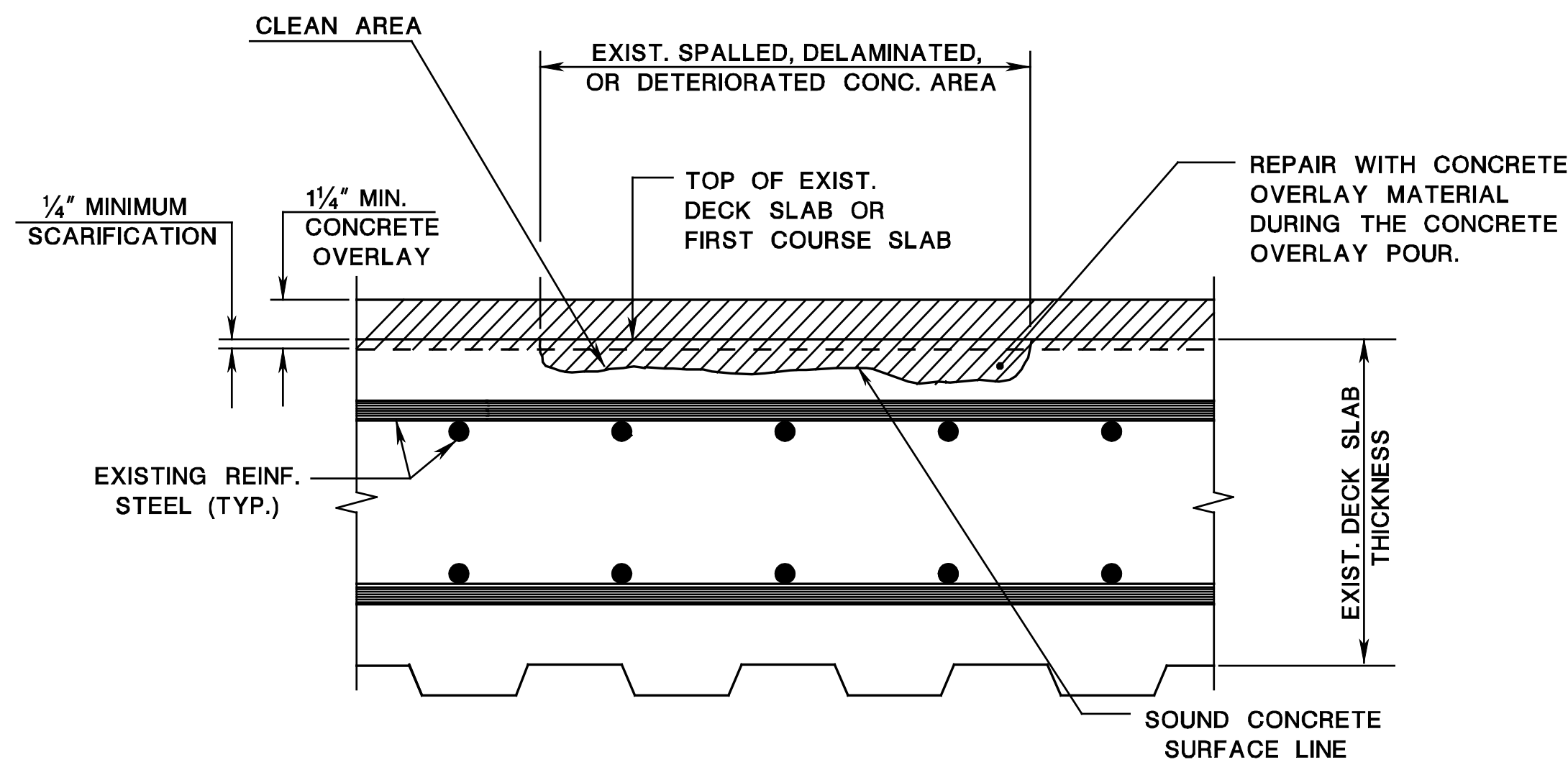
ID= TP2VILL

BCD-551-1-1 ORIGINAL SHEET

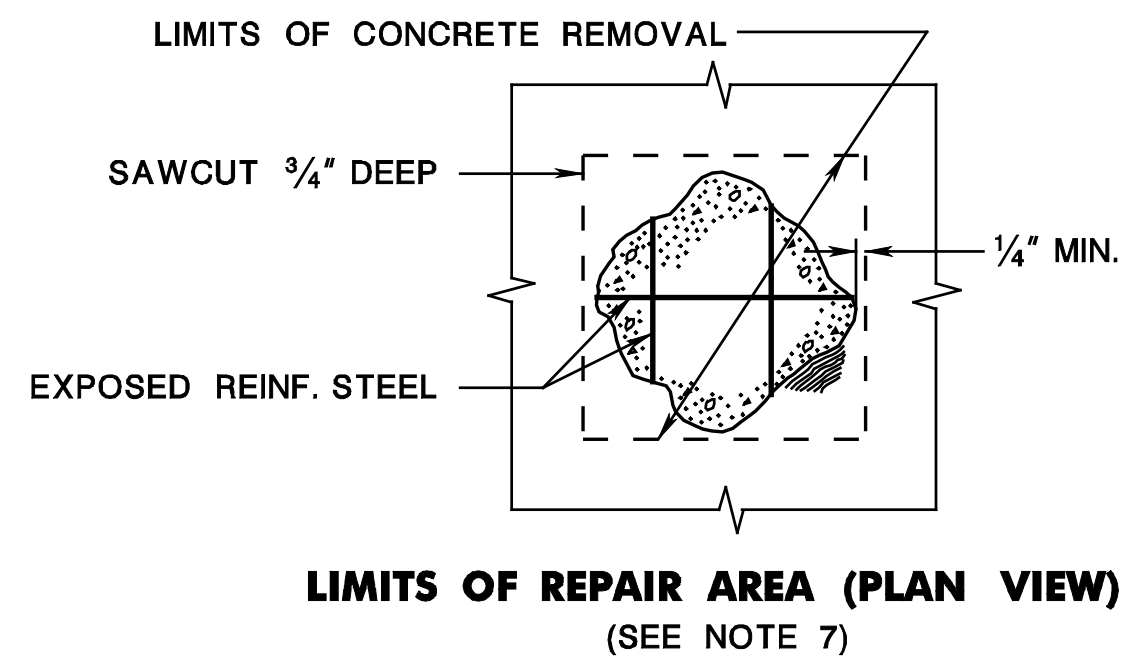
file=



REPAIR TYPE-B
(SEE NOTE 2)



TYPICAL REPAIR DETAIL FOR MINOR SPALLED AREAS
(SEE NOTE 1)



NOTES:

1. CLEAN SPALLED, DELAMINATED, AND DETERIORATED CONCRETE AREAS AND REPAIRED WITH THE CONCRETE OVERLAY TYPE USED FOR THE OVERLAY PLACEMENT, OR CLASS A CONCRETE MAY BE USED.
2. REPAIR TYPE-B: REMOVE ALL DETERIORATED AND DELAMINATED CONCRETE TO A MINIMUM DEPTH OF 1" BELOW THE BOTTOM OF THE TOP LAYER OF EXISTING REINFORCEMENT STEEL TO A MAXIMUM OF 50% OF THE THICKNESS OF THE EXISTING CONCRETE DECK.
3. REPAIR TYPE-C: REMOVE ALL DETERIORATED AND DELAMINATED CONCRETE, AND IF THE SOUND CONCRETE SURFACE IS LOCATED AT A DEPTH GREATER THAN 50% OF THE DECK THICKNESS WHEN MEASURED FROM THE TOP OF THE DECK, PERFORM TYPE-C REPAIR UPON APPROVAL OF THE RE, AS SHOWN IN THE DETAIL "REPAIR TYPE-C". IF THE BOTTOM MAT OF THE DECK REINFORCEMENT STEEL IS EXPOSED, REPLACE THE DECK SLAB TO FULL DEPTH IN THIS AREA OF EXPOSURE.
4. ENSURE THAT THE TOP SURFACE OF THE CONCRETE FOR TYPE-B AND TYPE-C REPAIRS IS EVEN WITH THE ADJACENT TOP OF EXISTING DECK SLAB AND TO MAINTAIN THE EXISTING GRADES AND CROSS SLOPES.
5. PLACE NEW CORROSION PROTECTED REINFORCEMENT STEEL TO SUPPLEMENT AN EXISTING REINFORCEMENT STEEL WHEN AN EXISTING ONE HAS A SECTION LOSS OF 25% OR MORE OF THE ORIGINAL CROSS SECTION, AS DETERMINED BY THE RE, OR THE EXISTING REINFORCEMENT STEEL IS BROKEN. THE NEW ONE TO EXTEND 30 BAR DIAMETERS IN EACH DIRECTION FROM WHERE THE SECTION LOSS OR BREAK ENDS. MODIFY THE LIMITS OF THE REPAIR AREA TO MEET THE REINFORCEMENT STEEL SPLICE LAP REQUIREMENTS.
6. REMOVE FOR REPAIR TYPE-B AND TYPE-C SOUND CONCRETE TO A DEPTH OF $\frac{1}{4}$ " MINIMUM TO 1" MAXIMUM IN ALL DIRECTIONS, EXCEPT THAT THE MAXIMUM LIMIT MAY BE MODIFIED UPON APPROVAL OF THE RE.
7. UPON APPROVAL OF THE RE, MODIFY THE LIMITS OF CONCRETE REMOVAL AS SHOWN IN THE "LIMITS OF REPAIR AREA (PLAN VIEW)" WHEN SUPPLEMENTARY REINFORCEMENT STEEL IS REQUIRED.
8. DECK REINFORCEMENT STEEL DETAILS SHOWN ARE GENERAL. ACTUAL REINFORCEMENT STEEL SPACINGS AND LOCATIONS WILL VARY FROM BRIDGE TO BRIDGE.
9. PLACE NEW REINFORCEMENT STEEL AT THE SAME LEVEL ALONGSIDE THE EXISTING DETERIORATED OR BROKEN REINFORCEMENT STEEL.
10. BEFORE PLACEMENT OF THE OVERLAY, REMOVE ALL PREVIOUSLY PATCHED AREAS COMPLETELY.

**BRIDGE DECK REHABILITATION
WITH CONCRETE OVERLAY**

N.T.S.

NEW JERSEY DEPARTMENT OF TRANSPORTATION
BUREAU OF STRUCTURAL ENGINEERING

BRIDGE CONSTRUCTION DETAILS

BCD-551-1.1

147
164

pen table= \\njdot\pwyw\veeyam\njdotw\Projects\NJDOTeng\Bids\TBA\Non-Roadway\bridge-txd2new.tbl
scale= 0.178016:1.000000
date= 26-SEP-2016 14:15
ID= TP2VILL

BCD-551-4.3

BCD-551-4

NEW JERSEY DEPARTMENT OF TRANSPORTATION
BUREAU OF STRUCTURAL ENGINEERING

BRIDGE DECK REHABILITATION
DECK JOINT REPAIR (SHEET 2 OF 2)
N.T.S.

BRIDGE CONSTRUCTION DETAILS

150
164

BCD-551-4.5

150
164

NOTES:

1. ENSURE THAT ALL NEW REINFORCEMENT STEEL IS DESIGNATED IN METRIC UNITS AND CORROSION PROTECTED.

2. "DECK JOINT RECONSTRUCTION" AND "HEADER RECONSTRUCTION" MUST INCLUDE:

A. 3/4" SAWCUT AS SHOWN IN JOINT DETAILS.

B. REMOVE CONCRETE AND DISPOSE OF MATERIALS TO LIMITS SHOWN AND REPLACE WITH CONCRETE.

C. REMOVE PREFORMED BITUMINOUS JOINT FILLER (IF ANY) TO DEPTH SHOWN OR AS DIRECTED BY THE RE.

D. BLOCKING FOR PROPOSED PREFORMED ELASTOMERIC JOINT SEALER.

E. REPLACEMENT OF CORROSION PROTECTED REINFORCEMENT STEEL.

F. PROPOSED PREFORMED BITUMINOUS JOINT FILLER WHERE REQUIRED.

G. DRILL AND FILL HOLES WITH NON-SHRINK GROUT.

H. SAWCUTTING THE CURB AND SIDEWALK TO INSTALL THE SEALER.

3. PROVIDE AS REQUIRED ARMORED JOINT.

EXISTING CONCRETE DECK

EXISTING CONCRETE HEADER
OR APPROACH SLAB

REMOVE AND REPLACE
HOT RUBBER ASPHALT JOINT SEALER

NEW PREFORMED BITUMINOUS
JOINT FILLER (AS REQUIRED)

EXISTING PREFORMED BITUMINOUS
JOINT FILLER

EXISTING 1LB COPPER
FLASHING TO REMAIN

DECK SLAB

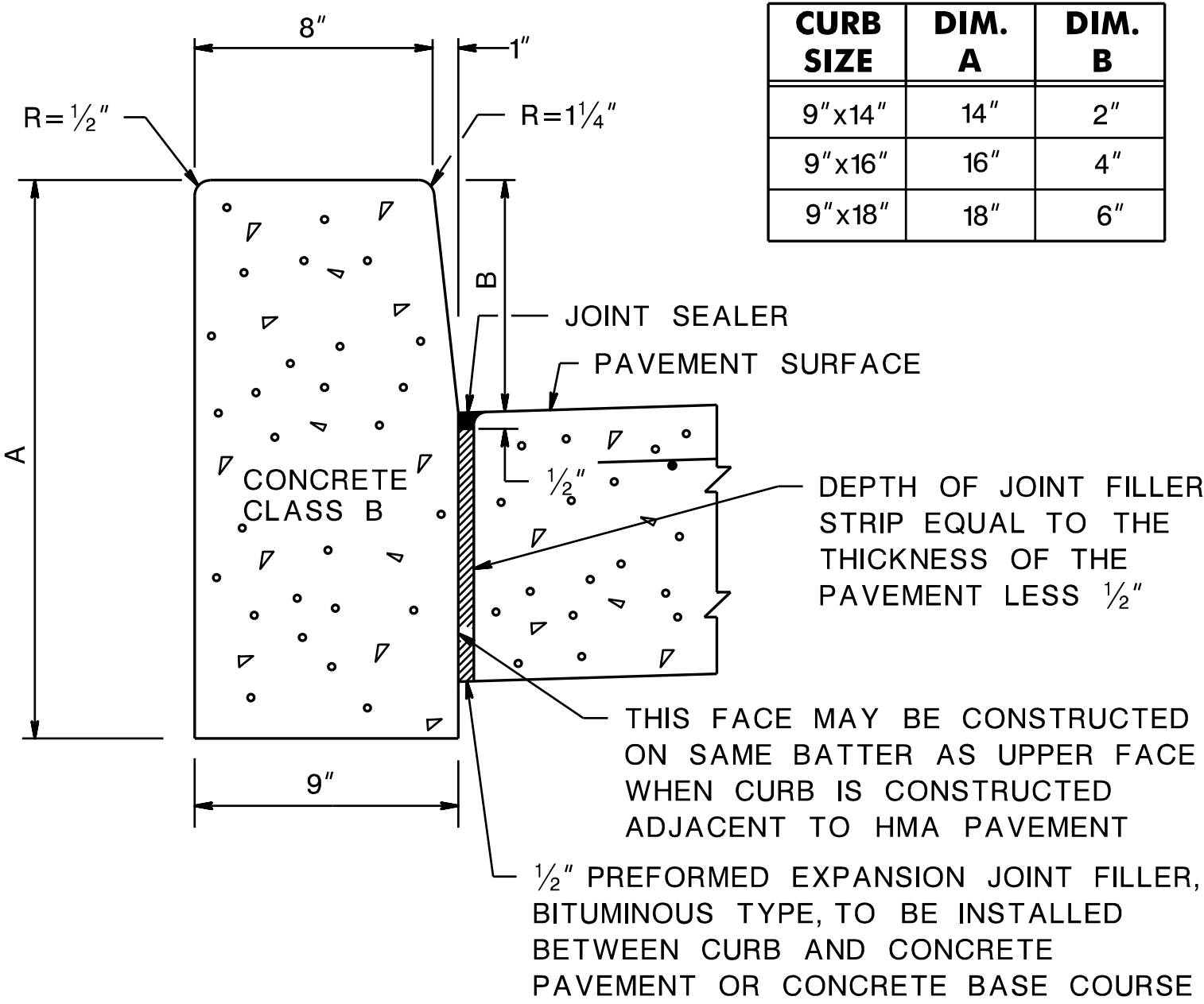
DECK JOINT RE-SEAL AT ABUTMENT

file=

GENERAL NOTES APPLYING TO ALL
TYPES OF DOWELLED CURBS

1. CONSTRUCT THE TRANSVERSE JOINTS AS SPECIFIED FOR THE CURB, EXCEPT THAT THE THICKNESS OF THE JOINT FILLER IN THE CURB TO BE AS FOLLOWS:
- (a) 1/2 INCH FOR INTERMEDIATE JOINTS AND JOINTS OVER DEFINITE CRACKS.
 - (b) 1/2 INCH OVER PAVEMENT JOINTS WHERE SLAB LENGTH IS 50 FEET OR LESS.
 - (c) 1 INCH OVER PAVEMENT JOINTS WHERE SLAB LENGTH IS MORE THAN 50 FEET VARIABLE IN MULTIPLES OF 1/2 INCH BUT NOT LESS THAN THE EXISTING WIDTH OF THE TRANSVERSE JOINTS IN BRIDGES AND THE JOINTS BETWEEN THE APPROACH SLABS AND BRIDGES.
2. FOR THICKNESS OF 1 INCH OR MORE, LAYERS OF 1/2 INCH MATERIAL MAY BE GLUED OR OTHERWISE FASTENED TOGETHER BY A MEANS SATISFACTORY TO THE RE. WHERE THE REQUIRED JOINT OPENING EXCEEDS 1 INCH, THE CONTRACTOR MAY CONSTRUCT OPEN JOINTS, IF DESIRED.
3. WHERE DOWELLED CURB IS TO BE CONSTRUCTED ACROSS A LONGITUDINAL JOINT IN THE EXISTING PAVEMENT, THE DOWELS IN THE SHORTER PORTION OF THE CURB PANEL ARE TO BE OMITTED AND THE CURB IN THE PORTION OF THE PANEL TO BE CONSTRUCTED WITH 45# SMOOTH ROLL ROOFING BETWEEN IT AND THE EXISTING PAVEMENT.

CD-607-1.1



CONCRETE VERTICAL CURB

CD-607-1.6

CONCRETE AND GRANITE CURB

N.T.S.

NOTE:
REINFORCEMENT STEEL IS IN METRIC UNITS.
HMA = HOT MIX ASPHALT

CD-607-1

NEW JERSEY DEPARTMENT OF TRANSPORTATION

CONSTRUCTION DETAILS