

NEW JERSEY SPORTS & EXPOSITION AUTHORITY

ENGINEERING ROOF REPLACEMENT

FOR
NEW JERSEY SPORTS & EXPOSITION
AUTHORITY

SJM

SJM ARCHITECTURE, LLC

954 KINDERKAMACK ROAD
RIVER EDGE, NJ, 07661
551.427.1487

<table><tr><td>ACOUS.</td><td>Acoustical</td><td>LAB.</td><td>Laboratory</td></tr><tr><td>A.D.</td><td>Area Drain</td><td>LAM.</td><td>Laminate</td></tr><tr><td>ADJ.</td><td>Adjustable</td><td>LAV.</td><td>Lavatory</td></tr><tr><td>A.F.F.</td><td>Above Finished Floor</td><td>LKR.</td><td>Locker</td></tr><tr><td>AGGR.</td><td>Aggregate</td><td>L.P.</td><td>Low Point</td></tr><tr><td>AL.</td><td>Aluminum</td><td>LT.</td><td>Light</td></tr><tr><td>APPROX.</td><td>Approximate</td><td>MAS.</td><td>Masonry</td></tr><tr><td>ARCH.</td><td>Architectural</td><td>MAX.</td><td>Maximum</td></tr><tr><td>ASPH.</td><td>Asphalt</td><td>M.C.</td><td>Mechanical</td></tr><tr><td>AC.T.</td><td>Acoustical Tile</td><td>MECH.</td><td>Mechanical</td></tr><tr><td>B.C.</td><td>Bottom of Curb</td><td>MEMB.</td><td>Membrane</td></tr><tr><td>BD.</td><td>Board</td><td>MET.</td><td>Metal</td></tr><tr><td>BIS.</td><td>Bituminous</td><td>MFR.</td><td>Manufacturer</td></tr><tr><td>BLDG.</td><td>Building</td><td>MH.</td><td>Manhole</td></tr><tr><td>BLK.</td><td>Block</td><td>MIN.</td><td>Minimum</td></tr><tr><td>BLKG.</td><td>Blocking</td><td>MIR.</td><td>Mirror</td></tr><tr><td>BM.</td><td>Beam</td><td>MISC.</td><td>Miscellaneous</td></tr><tr><td>BOT.</td><td>Bottom</td><td>MPC.</td><td>Multi-wall Polycarbonate</td></tr><tr><td>CAB.</td><td>Cabinet</td><td>M.O.</td><td>Masonry Opening</td></tr><tr><td>C.B.</td><td>Catch Basin</td><td>MTL.</td><td>Material</td></tr><tr><td>C.G.</td><td>Corner Guard</td><td>MTD.</td><td>Mounted</td></tr><tr><td>C.E.M.</td><td>Cement</td><td>MUL.</td><td>Mullion</td></tr><tr><td>C.T.</td><td>Ceramic Tile</td><td>N.T.S.</td><td>Not to Scale</td></tr><tr><td>C.I.</td><td>Cast Iron</td><td>O.A.</td><td>Overall</td></tr><tr><td>C.J.</td><td>Control Joint</td><td>OBS.</td><td>Obscure</td></tr><tr><td>CL</td><td>Center Line</td><td>O.C.</td><td>On Center</td></tr><tr><td>CLG.</td><td>Ceiling</td><td>O.D.</td><td>Outside Diameter</td></tr><tr><td>CLKG.</td><td>Caulking</td><td>OFF.</td><td>Office</td></tr><tr><td>CLO.</td><td>Closet</td><td>OPNG.</td><td>Opening</td></tr><tr><td>CLR.</td><td>Clear</td><td>OPP.</td><td>Opposite</td></tr><tr><td>C.M.T.</td><td>Ceramic Mosaic Tile</td><td>P.C.</td><td>Pre-cast Concrete</td></tr><tr><td>C.M.U.</td><td>Concrete Masonry Unit</td><td>PL.</td><td>Plate</td></tr><tr><td>COL.</td><td>Column</td><td>P.LAM.</td><td>Plastic Laminate</td></tr><tr><td>CONC.</td><td>Concrete</td><td>PLAS.</td><td>Plaster</td></tr><tr><td>CONN.</td><td>Connection</td><td>PLYWD.</td><td>Plywood</td></tr><tr><td>CONST.</td><td>Construction</td><td>PR.</td><td>Pair</td></tr><tr><td>CONT.</td><td>Continuous</td><td>PT.</td><td>Point</td></tr><tr><td>CORR.</td><td>Corridor</td><td>P.T.D.</td><td>Paper Towel Dispenser</td></tr><tr><td>CTSK.</td><td>Countersunk</td><td>PTN.</td><td>Partition</td></tr><tr><td>CNTR.</td><td>Counter</td><td>P.T.R.</td><td>Paper Towel Receptacle</td></tr><tr><td>CTR.</td><td>Center</td><td>Q.T.</td><td>Quarry Tile</td></tr><tr><td>CSW.</td><td>Cavity Shaft Wall</td><td>R.</td><td>Riser</td></tr><tr><td>CONC.PTD.</td><td>Concrete Painted</td><td>RAD.</td><td>Radius</td></tr><tr><td>CPT.</td><td>Carpet</td><td>R.D.</td><td>R.D. Drain</td></tr><tr><td>DBL.</td><td>Double</td><td>REF.</td><td>Reference</td></tr><tr><td>DEPT.</td><td>Department</td><td>REFR.</td><td>Refrigerator</td></tr><tr><td>D.F.</td><td>Drinking Fountain</td><td>RGR.</td><td>Register</td></tr><tr><td>DET.</td><td>Detail</td><td>REINF.</td><td>Reinforced</td></tr><tr><td>DIA.</td><td>Diameter</td><td>REQD.</td><td>Required</td></tr><tr><td>DM.</td><td>Dimension</td><td>RESIL.</td><td>Resilient</td></tr><tr><td>DISP.</td><td>Dispenser</td><td>REV.</td><td>Revision</td></tr><tr><td>DN.</td><td>Down</td><td>R.F.#</td><td>Roof Fan #</td></tr><tr><td>DR.</td><td>Door</td><td>R.H.</td><td>Roof Hatch</td></tr><tr><td>DS.</td><td>Downspout</td><td>RM.</td><td>Room</td></tr><tr><td>D.S.P.</td><td>Dry Standpipe</td><td>R.O.</td><td>Rough Opening</td></tr><tr><td>DWR.</td><td>Drawer</td><td>R.O.B.</td><td>Run of Bank</td></tr><tr><td>DWG.</td><td>Drawing</td><td>R.O.W.</td><td>Right of Way</td></tr><tr><td>EMR.</td><td>Elevator Machine Room</td><td>RWD.</td><td>Redwood</td></tr><tr><td>E.</td><td>East</td><td>R.W.L.</td><td>Rain Water Leader</td></tr><tr><td>EA.</td><td>Each</td><td>S.</td><td>South</td></tr><tr><td>E.J.</td><td>Expansion Joint</td><td>S.C.</td><td>Solid Core</td></tr><tr><td>EL.</td><td>Elevation</td><td>S.C.D.</td><td>Seat Cover Dispenser</td></tr><tr><td>ELEC.</td><td>Electrical</td><td>SCHED.</td><td>Schedule</td></tr><tr><td>ELEV.</td><td>Elevator</td><td>S.D.</td><td>Soap Dispenser</td></tr><tr><td>EMER.</td><td>Emergency</td><td>SECT.</td><td>Section</td></tr><tr><td>ENC.L.</td><td>Enclosure</td><td>SHR.</td><td>Shelf</td></tr><tr><td>E.P.</td><td>Electrical Panelboard</td><td>SHT.</td><td>Shower</td></tr><tr><td>EQ.</td><td>Equal</td><td>SIM.</td><td>Sheet</td></tr><tr><td>EQPT.</td><td>Equipment</td><td></td><td>Similar</td></tr><tr><td>E.W.C.</td><td>Electric Water Cooler</td><td>SPEC.</td><td>Specification</td></tr><tr><td>EXIST.</td><td>Existing</td><td>SQ.</td><td>Square</td></tr><tr><td>EXPO.</td><td>Exposed</td><td>S.S.</td><td>Stainless Steel</td></tr><tr><td>EXP.</td><td>Expansion</td><td>S.SK.</td><td>Service Sink</td></tr><tr><td>EXT.</td><td>Exterior</td><td>STA.</td><td>Station</td></tr><tr><td>EIFS.</td><td>Exterior Insulated Finish System</td><td>S.T.C.</td><td>Sound Transmission Class</td></tr><tr><td>EXP.CONST.</td><td>Exposed Construction</td><td>STD.</td><td>Standard</td></tr><tr><td>F.A.</td><td>Fire Alarm</td><td>STL.</td><td>Steel</td></tr><tr><td>F.B.</td><td>Flat Bar</td><td>STOR.</td><td>Storage</td></tr><tr><td>F.D.</td><td>Floor Drain</td><td>STRUCT.</td><td>Structural</td></tr><tr><td>FDN.</td><td>Foundation</td><td>SUSP.</td><td>Suspended</td></tr><tr><td>F.E.</td><td>Fire Extinguisher</td><td>SYM.</td><td>Symmetrical</td></tr><tr><td>F.E.C.</td><td>Fire Extinguisher Cabinet</td><td>T.</td><td>Tread</td></tr><tr><td>F.H.C.</td><td>Fire Hose Cabinet</td><td>TB.</td><td>Tack Board</td></tr><tr><td>FIN.</td><td>Finish</td><td>T.B.</td><td>Towel Bar</td></tr><tr><td>FLR.</td><td>Floor</td><td>T.O.C.</td><td>Top of Curb</td></tr><tr><td>FLASH.</td><td>Flashing</td><td>TEL.</td><td>Telephone</td></tr><tr><td>FLUOR.</td><td>Flourescent</td><td>TEMP.</td><td>Tempered</td></tr><tr><td>F.O.C.</td><td>Face of Concrete</td><td>TER.</td><td>Terrazzo</td></tr><tr><td>F.O.F.</td><td>Face of Finish</td><td>T.G.G.</td><td>Tongue and Groove</td></tr><tr><td>F.O.S.</td><td>Face of Studs</td><td>THK.</td><td>Thick</td></tr><tr><td>FPFG.</td><td>Fireproofing</td><td>T.P.D.</td><td>Top of Pavement</td></tr><tr><td>F.P.S.C.</td><td>Fireproof Self Closing</td><td>T.V.</td><td>Toilet Paper Dispenser</td></tr><tr><td>F.S.</td><td>Full Size</td><td>T.O.W.</td><td>Top of Wall</td></tr><tr><td>FT.</td><td>Foot or Feet</td><td>TYP.</td><td>Typical</td></tr><tr><td>FTG.</td><td>Footing</td><td>UNF.</td><td>Unfinished</td></tr><tr><td>FURR.</td><td>Furring</td><td>U.O.N.</td><td>Unless Otherwise Noted</td></tr><tr><td>FUT.</td><td>Future</td><td>UR.</td><td>Urinal</td></tr><tr><td>GA.</td><td>Gage</td><td>VERT.</td><td>Vertical</td></tr><tr><td>GALV.</td><td>Galvanized</td><td>VEST.</td><td>Vestibule</td></tr><tr><td>G.B.</td><td>Grab Bar</td><td>V.C.T.</td><td>Vinyl Composition Tile</td></tr><tr><td>GL.</td><td>Glass</td><td>V.W.C.</td><td>Vinyl Wall Covering</td></tr><tr><td>GND.</td><td>Ground</td><td>W.</td><td>West</td></tr><tr><td>GR.</td><td>Grade</td><td>W/</td><td>With</td></tr><tr><td>GYP.</td><td>Gypsum</td><td>WB.</td><td>White Board</td></tr><tr><td>G.W.B.</td><td>Gypsum Wallboard</td><td>W.C.</td><td>Water Closet</td></tr><tr><td>G.W.T.</td><td>Glazed Wall Tile</td><td>WD.</td><td>Wood</td></tr><tr><td>H.B.</td><td>Hose Bibb</td><td>W/O</td><td>Without</td></tr><tr><td>H.C.</td><td>Hollow Core</td><td>WP.</td><td>Waterproof</td></tr><tr><td>HDWD.</td><td>Hardwood</td><td>W.R.</td><td>Water Resistant</td></tr><tr><td>HW.</td><td>Hardware</td><td>WSCT.</td><td>Wainscot</td></tr><tr><td>H.M.</td><td>Hollow Metal</td><td>WT.</td><td>Weight</td></tr><tr><td>HORIZ.</td><td>Horizontal</td><td>W.G.</td><td>Wire Glass</td></tr><tr><td>H.P.</td><td>High Point</td><td></td><td></td></tr><tr><td>HR.</td><td>Hour</td><td></td><td></td></tr><tr><td>HGT.</td><td>Height</td><td></td><td></td></tr><tr><td>I.D.</td><td>Inside Diameter</td><td></td><td></td></tr><tr><td>IMP.</td><td>Insulated Metal Panel</td><td></td><td></td></tr><tr><td>INSUL.</td><td>Insulation</td><td></td><td></td></tr><tr><td>INT.</td><td>Interior</td><td></td><td></td></tr><tr><td>JAN.</td><td>Janitor</td><td></td><td></td></tr><tr><td>JT.</td><td>Joint</td><td></td><td></td></tr><tr><td>KIT.</td><td>Kitchen</td><td></td><td></td></tr></table>	ACOUS.	Acoustical	LAB.	Laboratory	A.D.	Area Drain	LAM.	Laminate	ADJ.	Adjustable	LAV.	Lavatory	A.F.F.	Above Finished Floor	LKR.	Locker	AGGR.	Aggregate	L.P.	Low Point	AL.	Aluminum	LT.	Light	APPROX.	Approximate	MAS.	Masonry	ARCH.	Architectural	MAX.	Maximum	ASPH.	Asphalt	M.C.	Mechanical	AC.T.	Acoustical Tile	MECH.	Mechanical	B.C.	Bottom of Curb	MEMB.	Membrane	BD.	Board	MET.	Metal	BIS.	Bituminous	MFR.	Manufacturer	BLDG.	Building	MH.	Manhole	BLK.	Block	MIN.	Minimum	BLKG.	Blocking	MIR.	Mirror	BM.	Beam	MISC.	Miscellaneous	BOT.	Bottom	MPC.	Multi-wall Polycarbonate	CAB.	Cabinet	M.O.	Masonry Opening	C.B.	Catch Basin	MTL.	Material	C.G.	Corner Guard	MTD.	Mounted	C.E.M.	Cement	MUL.	Mullion	C.T.	Ceramic Tile	N.T.S.	Not to Scale	C.I.	Cast Iron	O.A.	Overall	C.J.	Control Joint	OBS.	Obscure	CL	Center Line	O.C.	On Center	CLG.	Ceiling	O.D.	Outside Diameter	CLKG.	Caulking	OFF.	Office	CLO.	Closet	OPNG.	Opening	CLR.	Clear	OPP.	Opposite	C.M.T.	Ceramic Mosaic Tile	P.C.	Pre-cast Concrete	C.M.U.	Concrete Masonry Unit	PL.	Plate	COL.	Column	P.LAM.	Plastic Laminate	CONC.	Concrete	PLAS.	Plaster	CONN.	Connection	PLYWD.	Plywood	CONST.	Construction	PR.	Pair	CONT.	Continuous	PT.	Point	CORR.	Corridor	P.T.D.	Paper Towel Dispenser	CTSK.	Countersunk	PTN.	Partition	CNTR.	Counter	P.T.R.	Paper Towel Receptacle	CTR.	Center	Q.T.	Quarry Tile	CSW.	Cavity Shaft Wall	R.	Riser	CONC.PTD.	Concrete Painted	RAD.	Radius	CPT.	Carpet	R.D.	R.D. Drain	DBL.	Double	REF.	Reference	DEPT.	Department	REFR.	Refrigerator	D.F.	Drinking Fountain	RGR.	Register	DET.	Detail	REINF.	Reinforced	DIA.	Diameter	REQD.	Required	DM.	Dimension	RESIL.	Resilient	DISP.	Dispenser	REV.	Revision	DN.	Down	R.F.#	Roof Fan #	DR.	Door	R.H.	Roof Hatch	DS.	Downspout	RM.	Room	D.S.P.	Dry Standpipe	R.O.	Rough Opening	DWR.	Drawer	R.O.B.	Run of Bank	DWG.	Drawing	R.O.W.	Right of Way	EMR.	Elevator Machine Room	RWD.	Redwood	E.	East	R.W.L.	Rain Water Leader	EA.	Each	S.	South	E.J.	Expansion Joint	S.C.	Solid Core	EL.	Elevation	S.C.D.	Seat Cover Dispenser	ELEC.	Electrical	SCHED.	Schedule	ELEV.	Elevator	S.D.	Soap Dispenser	EMER.	Emergency	SECT.	Section	ENC.L.	Enclosure	SHR.	Shelf	E.P.	Electrical Panelboard	SHT.	Shower	EQ.	Equal	SIM.	Sheet	EQPT.	Equipment		Similar	E.W.C.	Electric Water Cooler	SPEC.	Specification	EXIST.	Existing	SQ.	Square	EXPO.	Exposed	S.S.	Stainless Steel	EXP.	Expansion	S.SK.	Service Sink	EXT.	Exterior	STA.	Station	EIFS.	Exterior Insulated Finish System	S.T.C.	Sound Transmission Class	EXP.CONST.	Exposed Construction	STD.	Standard	F.A.	Fire Alarm	STL.	Steel	F.B.	Flat Bar	STOR.	Storage	F.D.	Floor Drain	STRUCT.	Structural	FDN.	Foundation	SUSP.	Suspended	F.E.	Fire Extinguisher	SYM.	Symmetrical	F.E.C.	Fire Extinguisher Cabinet	T.	Tread	F.H.C.	Fire Hose Cabinet	TB.	Tack Board	FIN.	Finish	T.B.	Towel Bar	FLR.	Floor	T.O.C.	Top of Curb	FLASH.	Flashing	TEL.	Telephone	FLUOR.	Flourescent	TEMP.	Tempered	F.O.C.	Face of Concrete	TER.	Terrazzo	F.O.F.	Face of Finish	T.G.G.	Tongue and Groove	F.O.S.	Face of Studs	THK.	Thick	FPFG.	Fireproofing	T.P.D.	Top of Pavement	F.P.S.C.	Fireproof Self Closing	T.V.	Toilet Paper Dispenser	F.S.	Full Size	T.O.W.	Top of Wall	FT.	Foot or Feet	TYP.	Typical	FTG.	Footing	UNF.	Unfinished	FURR.	Furring	U.O.N.	Unless Otherwise Noted	FUT.	Future	UR.	Urinal	GA.	Gage	VERT.	Vertical	GALV.	Galvanized	VEST.	Vestibule	G.B.	Grab Bar	V.C.T.	Vinyl Composition Tile	GL.	Glass	V.W.C.	Vinyl Wall Covering	GND.	Ground	W.	West	GR.	Grade	W/	With	GYP.	Gypsum	WB.	White Board	G.W.B.	Gypsum Wallboard	W.C.	Water Closet	G.W.T.	Glazed Wall Tile	WD.	Wood	H.B.	Hose Bibb	W/O	Without	H.C.	Hollow Core	WP.	Waterproof	HDWD.	Hardwood	W.R.	Water Resistant	HW.	Hardware	WSCT.	Wainscot	H.M.	Hollow Metal	WT.	Weight	HORIZ.	Horizontal	W.G.	Wire Glass	H.P.	High Point			HR.	Hour			HGT.	Height			I.D.	Inside Diameter			IMP.	Insulated Metal Panel			INSUL.	Insulation			INT.	Interior			JAN.	Janitor			JT.	Joint			KIT.	Kitchen			<table><tr><td></td><td>SITE NORTH</td><td></td><td>CENTER LINE</td></tr><tr><td></td><td>PROJECT NORTH</td><td></td><td>PARTITION TYPE DESIGNATION</td></tr><tr><td></td><td>WINDOW DESIGNATION</td><td></td><td>EXISTING SPOT ELEVATION</td></tr><tr><td></td><td>DOOR DESIGNATION</td><td></td><td>NEW SPOT ELEVATION</td></tr><tr><td></td><td>BREAK LINE</td><td></td><td>DETAIL TAG</td></tr><tr><td></td><td>CENTER LINE</td><td></td><td>SECTION TAG</td></tr><tr><td></td><td>OBJECT LINE</td><td></td><td>ELEVATION TAG</td></tr><tr><td></td><td>HIDDEN LINE</td><td></td><td>ROOM DESIGNATION</td></tr><tr><td></td><td>BOUNDARY OR PROPERTY LINE</td><td></td><td>REVISION CLOUD & DELTA</td></tr><tr><td></td><td>DATUM ELEVATION</td><td></td><td>COLUMN GRID</td></tr></table>		SITE NORTH		CENTER LINE		PROJECT NORTH		PARTITION TYPE DESIGNATION		WINDOW DESIGNATION		EXISTING SPOT ELEVATION		DOOR DESIGNATION		NEW SPOT ELEVATION		BREAK LINE		DETAIL TAG		CENTER LINE		SECTION TAG		OBJECT LINE		ELEVATION TAG		HIDDEN LINE		ROOM DESIGNATION		BOUNDARY OR PROPERTY LINE		REVISION CLOUD & DELTA		DATUM ELEVATION		COLUMN GRID	<p>NOTE THESE DRAWINGS ILLUSTRATE WORK CONFORMING WITH UNIFORM CONSTRUCTION CODE NEW JERSEY (UCCNJ), 5:23-6.3 DEFINITIONS, ALTERATIONS.</p> <p>WORK SHALL COMPLY WITH UCCNJ, 5:23-6.6 ALTERATIONS</p> <p>APPLICABLE CODES 2021 INTERNATIONAL BUILDING CODE - NJ EDITION, W/ NJAC 5:23-3.14 AMENDMENTS 2020 NATIONAL ELECTRICAL CODE, W/ NJAC 5:23-3.16 AMENDMENTS 2021 NATIONAL STANDARD PLUMBING CODE, W/ NJAC 5:23-3.15 AMENDMENTS 2019 ASHRAE 90.1 (COMMERCIAL), W/ NJAC 5:23-3.18 AMENDMENTS 2021 INTERNATIONAL MECHANICAL CODE, W/ NJAC 5:23-3.20 AMENDMENTS 2021 INTERNATIONAL FUEL GAS CODE, W/ NJAC 5:23-3.22 AMENDMENTS 2017 ICC/ANSI A117.1, W/ NJAC 5:23-7 AMENDMENTS REHABILITATION SUBCODE, NJAC 5:23-6</p> <p>AREA OF WORK: ~ 4,130 SF</p> <p>USE GROUP: NO CHANGE</p> <p>OCCUPANT LOAD: NO CHANGE</p>	<p>PROJECT LOCATION 50 STATE ROUTE 120 EAST RUTHERFORD, NJ 07073</p> <p>3 LOCATION PLAN SCALE: N.T.S.</p>																																																																																																																																																																																																																																																																																																																																																																																																																																																																																																																																																					
ACOUS.	Acoustical	LAB.	Laboratory																																																																																																																																																																																																																																																																																																																																																																																																																																																																																																																																																																																																																																																																																																																																																																																																																																																																																																																																																																																																																																																																																																					
A.D.	Area Drain	LAM.	Laminate																																																																																																																																																																																																																																																																																																																																																																																																																																																																																																																																																																																																																																																																																																																																																																																																																																																																																																																																																																																																																																																																																																					
ADJ.	Adjustable	LAV.	Lavatory																																																																																																																																																																																																																																																																																																																																																																																																																																																																																																																																																																																																																																																																																																																																																																																																																																																																																																																																																																																																																																																																																																					
A.F.F.	Above Finished Floor	LKR.	Locker																																																																																																																																																																																																																																																																																																																																																																																																																																																																																																																																																																																																																																																																																																																																																																																																																																																																																																																																																																																																																																																																																																					
AGGR.	Aggregate	L.P.	Low Point																																																																																																																																																																																																																																																																																																																																																																																																																																																																																																																																																																																																																																																																																																																																																																																																																																																																																																																																																																																																																																																																																																					
AL.	Aluminum	LT.	Light																																																																																																																																																																																																																																																																																																																																																																																																																																																																																																																																																																																																																																																																																																																																																																																																																																																																																																																																																																																																																																																																																																					
APPROX.	Approximate	MAS.	Masonry																																																																																																																																																																																																																																																																																																																																																																																																																																																																																																																																																																																																																																																																																																																																																																																																																																																																																																																																																																																																																																																																																																					
ARCH.	Architectural	MAX.	Maximum																																																																																																																																																																																																																																																																																																																																																																																																																																																																																																																																																																																																																																																																																																																																																																																																																																																																																																																																																																																																																																																																																																					
ASPH.	Asphalt	M.C.	Mechanical																																																																																																																																																																																																																																																																																																																																																																																																																																																																																																																																																																																																																																																																																																																																																																																																																																																																																																																																																																																																																																																																																																					
AC.T.	Acoustical Tile	MECH.	Mechanical																																																																																																																																																																																																																																																																																																																																																																																																																																																																																																																																																																																																																																																																																																																																																																																																																																																																																																																																																																																																																																																																																																					
B.C.	Bottom of Curb	MEMB.	Membrane																																																																																																																																																																																																																																																																																																																																																																																																																																																																																																																																																																																																																																																																																																																																																																																																																																																																																																																																																																																																																																																																																																					
BD.	Board	MET.	Metal																																																																																																																																																																																																																																																																																																																																																																																																																																																																																																																																																																																																																																																																																																																																																																																																																																																																																																																																																																																																																																																																																																					
BIS.	Bituminous	MFR.	Manufacturer																																																																																																																																																																																																																																																																																																																																																																																																																																																																																																																																																																																																																																																																																																																																																																																																																																																																																																																																																																																																																																																																																																					
BLDG.	Building	MH.	Manhole																																																																																																																																																																																																																																																																																																																																																																																																																																																																																																																																																																																																																																																																																																																																																																																																																																																																																																																																																																																																																																																																																																					
BLK.	Block	MIN.	Minimum																																																																																																																																																																																																																																																																																																																																																																																																																																																																																																																																																																																																																																																																																																																																																																																																																																																																																																																																																																																																																																																																																																					
BLKG.	Blocking	MIR.	Mirror																																																																																																																																																																																																																																																																																																																																																																																																																																																																																																																																																																																																																																																																																																																																																																																																																																																																																																																																																																																																																																																																																																					
BM.	Beam	MISC.	Miscellaneous																																																																																																																																																																																																																																																																																																																																																																																																																																																																																																																																																																																																																																																																																																																																																																																																																																																																																																																																																																																																																																																																																																					
BOT.	Bottom	MPC.	Multi-wall Polycarbonate																																																																																																																																																																																																																																																																																																																																																																																																																																																																																																																																																																																																																																																																																																																																																																																																																																																																																																																																																																																																																																																																																																					
CAB.	Cabinet	M.O.	Masonry Opening																																																																																																																																																																																																																																																																																																																																																																																																																																																																																																																																																																																																																																																																																																																																																																																																																																																																																																																																																																																																																																																																																																					
C.B.	Catch Basin	MTL.	Material																																																																																																																																																																																																																																																																																																																																																																																																																																																																																																																																																																																																																																																																																																																																																																																																																																																																																																																																																																																																																																																																																																					
C.G.	Corner Guard	MTD.	Mounted																																																																																																																																																																																																																																																																																																																																																																																																																																																																																																																																																																																																																																																																																																																																																																																																																																																																																																																																																																																																																																																																																																					
C.E.M.	Cement	MUL.	Mullion																																																																																																																																																																																																																																																																																																																																																																																																																																																																																																																																																																																																																																																																																																																																																																																																																																																																																																																																																																																																																																																																																																					
C.T.	Ceramic Tile	N.T.S.	Not to Scale																																																																																																																																																																																																																																																																																																																																																																																																																																																																																																																																																																																																																																																																																																																																																																																																																																																																																																																																																																																																																																																																																																					
C.I.	Cast Iron	O.A.	Overall																																																																																																																																																																																																																																																																																																																																																																																																																																																																																																																																																																																																																																																																																																																																																																																																																																																																																																																																																																																																																																																																																																					
C.J.	Control Joint	OBS.	Obscure																																																																																																																																																																																																																																																																																																																																																																																																																																																																																																																																																																																																																																																																																																																																																																																																																																																																																																																																																																																																																																																																																																					
CL	Center Line	O.C.	On Center																																																																																																																																																																																																																																																																																																																																																																																																																																																																																																																																																																																																																																																																																																																																																																																																																																																																																																																																																																																																																																																																																																					
CLG.	Ceiling	O.D.	Outside Diameter																																																																																																																																																																																																																																																																																																																																																																																																																																																																																																																																																																																																																																																																																																																																																																																																																																																																																																																																																																																																																																																																																																					
CLKG.	Caulking	OFF.	Office																																																																																																																																																																																																																																																																																																																																																																																																																																																																																																																																																																																																																																																																																																																																																																																																																																																																																																																																																																																																																																																																																																					
CLO.	Closet	OPNG.	Opening																																																																																																																																																																																																																																																																																																																																																																																																																																																																																																																																																																																																																																																																																																																																																																																																																																																																																																																																																																																																																																																																																																					
CLR.	Clear	OPP.	Opposite																																																																																																																																																																																																																																																																																																																																																																																																																																																																																																																																																																																																																																																																																																																																																																																																																																																																																																																																																																																																																																																																																																					
C.M.T.	Ceramic Mosaic Tile	P.C.	Pre-cast Concrete																																																																																																																																																																																																																																																																																																																																																																																																																																																																																																																																																																																																																																																																																																																																																																																																																																																																																																																																																																																																																																																																																																					
C.M.U.	Concrete Masonry Unit	PL.	Plate																																																																																																																																																																																																																																																																																																																																																																																																																																																																																																																																																																																																																																																																																																																																																																																																																																																																																																																																																																																																																																																																																																					
COL.	Column	P.LAM.	Plastic Laminate																																																																																																																																																																																																																																																																																																																																																																																																																																																																																																																																																																																																																																																																																																																																																																																																																																																																																																																																																																																																																																																																																																					
CONC.	Concrete	PLAS.	Plaster																																																																																																																																																																																																																																																																																																																																																																																																																																																																																																																																																																																																																																																																																																																																																																																																																																																																																																																																																																																																																																																																																																					
CONN.	Connection	PLYWD.	Plywood																																																																																																																																																																																																																																																																																																																																																																																																																																																																																																																																																																																																																																																																																																																																																																																																																																																																																																																																																																																																																																																																																																					
CONST.	Construction	PR.	Pair																																																																																																																																																																																																																																																																																																																																																																																																																																																																																																																																																																																																																																																																																																																																																																																																																																																																																																																																																																																																																																																																																																					
CONT.	Continuous	PT.	Point																																																																																																																																																																																																																																																																																																																																																																																																																																																																																																																																																																																																																																																																																																																																																																																																																																																																																																																																																																																																																																																																																																					
CORR.	Corridor	P.T.D.	Paper Towel Dispenser																																																																																																																																																																																																																																																																																																																																																																																																																																																																																																																																																																																																																																																																																																																																																																																																																																																																																																																																																																																																																																																																																																					
CTSK.	Countersunk	PTN.	Partition																																																																																																																																																																																																																																																																																																																																																																																																																																																																																																																																																																																																																																																																																																																																																																																																																																																																																																																																																																																																																																																																																																					
CNTR.	Counter	P.T.R.	Paper Towel Receptacle																																																																																																																																																																																																																																																																																																																																																																																																																																																																																																																																																																																																																																																																																																																																																																																																																																																																																																																																																																																																																																																																																																					
CTR.	Center	Q.T.	Quarry Tile																																																																																																																																																																																																																																																																																																																																																																																																																																																																																																																																																																																																																																																																																																																																																																																																																																																																																																																																																																																																																																																																																																					
CSW.	Cavity Shaft Wall	R.	Riser																																																																																																																																																																																																																																																																																																																																																																																																																																																																																																																																																																																																																																																																																																																																																																																																																																																																																																																																																																																																																																																																																																					
CONC.PTD.	Concrete Painted	RAD.	Radius																																																																																																																																																																																																																																																																																																																																																																																																																																																																																																																																																																																																																																																																																																																																																																																																																																																																																																																																																																																																																																																																																																					
CPT.	Carpet	R.D.	R.D. Drain																																																																																																																																																																																																																																																																																																																																																																																																																																																																																																																																																																																																																																																																																																																																																																																																																																																																																																																																																																																																																																																																																																					
DBL.	Double	REF.	Reference																																																																																																																																																																																																																																																																																																																																																																																																																																																																																																																																																																																																																																																																																																																																																																																																																																																																																																																																																																																																																																																																																																					
DEPT.	Department	REFR.	Refrigerator																																																																																																																																																																																																																																																																																																																																																																																																																																																																																																																																																																																																																																																																																																																																																																																																																																																																																																																																																																																																																																																																																																					
D.F.	Drinking Fountain	RGR.	Register																																																																																																																																																																																																																																																																																																																																																																																																																																																																																																																																																																																																																																																																																																																																																																																																																																																																																																																																																																																																																																																																																																					
DET.	Detail	REINF.	Reinforced																																																																																																																																																																																																																																																																																																																																																																																																																																																																																																																																																																																																																																																																																																																																																																																																																																																																																																																																																																																																																																																																																																					
DIA.	Diameter	REQD.	Required																																																																																																																																																																																																																																																																																																																																																																																																																																																																																																																																																																																																																																																																																																																																																																																																																																																																																																																																																																																																																																																																																																					
DM.	Dimension	RESIL.	Resilient																																																																																																																																																																																																																																																																																																																																																																																																																																																																																																																																																																																																																																																																																																																																																																																																																																																																																																																																																																																																																																																																																																					
DISP.	Dispenser	REV.	Revision																																																																																																																																																																																																																																																																																																																																																																																																																																																																																																																																																																																																																																																																																																																																																																																																																																																																																																																																																																																																																																																																																																					
DN.	Down	R.F.#	Roof Fan #																																																																																																																																																																																																																																																																																																																																																																																																																																																																																																																																																																																																																																																																																																																																																																																																																																																																																																																																																																																																																																																																																																					
DR.	Door	R.H.	Roof Hatch																																																																																																																																																																																																																																																																																																																																																																																																																																																																																																																																																																																																																																																																																																																																																																																																																																																																																																																																																																																																																																																																																																					
DS.	Downspout	RM.	Room																																																																																																																																																																																																																																																																																																																																																																																																																																																																																																																																																																																																																																																																																																																																																																																																																																																																																																																																																																																																																																																																																																					
D.S.P.	Dry Standpipe	R.O.	Rough Opening																																																																																																																																																																																																																																																																																																																																																																																																																																																																																																																																																																																																																																																																																																																																																																																																																																																																																																																																																																																																																																																																																																					
DWR.	Drawer	R.O.B.	Run of Bank																																																																																																																																																																																																																																																																																																																																																																																																																																																																																																																																																																																																																																																																																																																																																																																																																																																																																																																																																																																																																																																																																																					
DWG.	Drawing	R.O.W.	Right of Way																																																																																																																																																																																																																																																																																																																																																																																																																																																																																																																																																																																																																																																																																																																																																																																																																																																																																																																																																																																																																																																																																																					
EMR.	Elevator Machine Room	RWD.	Redwood																																																																																																																																																																																																																																																																																																																																																																																																																																																																																																																																																																																																																																																																																																																																																																																																																																																																																																																																																																																																																																																																																																					
E.	East	R.W.L.	Rain Water Leader																																																																																																																																																																																																																																																																																																																																																																																																																																																																																																																																																																																																																																																																																																																																																																																																																																																																																																																																																																																																																																																																																																					
EA.	Each	S.	South																																																																																																																																																																																																																																																																																																																																																																																																																																																																																																																																																																																																																																																																																																																																																																																																																																																																																																																																																																																																																																																																																																					
E.J.	Expansion Joint	S.C.	Solid Core																																																																																																																																																																																																																																																																																																																																																																																																																																																																																																																																																																																																																																																																																																																																																																																																																																																																																																																																																																																																																																																																																																					
EL.	Elevation	S.C.D.	Seat Cover Dispenser																																																																																																																																																																																																																																																																																																																																																																																																																																																																																																																																																																																																																																																																																																																																																																																																																																																																																																																																																																																																																																																																																																					
ELEC.	Electrical	SCHED.	Schedule																																																																																																																																																																																																																																																																																																																																																																																																																																																																																																																																																																																																																																																																																																																																																																																																																																																																																																																																																																																																																																																																																																					
ELEV.	Elevator	S.D.	Soap Dispenser																																																																																																																																																																																																																																																																																																																																																																																																																																																																																																																																																																																																																																																																																																																																																																																																																																																																																																																																																																																																																																																																																																					
EMER.	Emergency	SECT.	Section																																																																																																																																																																																																																																																																																																																																																																																																																																																																																																																																																																																																																																																																																																																																																																																																																																																																																																																																																																																																																																																																																																					
ENC.L.	Enclosure	SHR.	Shelf																																																																																																																																																																																																																																																																																																																																																																																																																																																																																																																																																																																																																																																																																																																																																																																																																																																																																																																																																																																																																																																																																																					
E.P.	Electrical Panelboard	SHT.	Shower																																																																																																																																																																																																																																																																																																																																																																																																																																																																																																																																																																																																																																																																																																																																																																																																																																																																																																																																																																																																																																																																																																					
EQ.	Equal	SIM.	Sheet																																																																																																																																																																																																																																																																																																																																																																																																																																																																																																																																																																																																																																																																																																																																																																																																																																																																																																																																																																																																																																																																																																					
EQPT.	Equipment		Similar																																																																																																																																																																																																																																																																																																																																																																																																																																																																																																																																																																																																																																																																																																																																																																																																																																																																																																																																																																																																																																																																																																					
E.W.C.	Electric Water Cooler	SPEC.	Specification																																																																																																																																																																																																																																																																																																																																																																																																																																																																																																																																																																																																																																																																																																																																																																																																																																																																																																																																																																																																																																																																																																					
EXIST.	Existing	SQ.	Square																																																																																																																																																																																																																																																																																																																																																																																																																																																																																																																																																																																																																																																																																																																																																																																																																																																																																																																																																																																																																																																																																																					
EXPO.	Exposed	S.S.	Stainless Steel																																																																																																																																																																																																																																																																																																																																																																																																																																																																																																																																																																																																																																																																																																																																																																																																																																																																																																																																																																																																																																																																																																					
EXP.	Expansion	S.SK.	Service Sink																																																																																																																																																																																																																																																																																																																																																																																																																																																																																																																																																																																																																																																																																																																																																																																																																																																																																																																																																																																																																																																																																																					
EXT.	Exterior	STA.	Station																																																																																																																																																																																																																																																																																																																																																																																																																																																																																																																																																																																																																																																																																																																																																																																																																																																																																																																																																																																																																																																																																																					
EIFS.	Exterior Insulated Finish System	S.T.C.	Sound Transmission Class																																																																																																																																																																																																																																																																																																																																																																																																																																																																																																																																																																																																																																																																																																																																																																																																																																																																																																																																																																																																																																																																																																					
EXP.CONST.	Exposed Construction	STD.	Standard																																																																																																																																																																																																																																																																																																																																																																																																																																																																																																																																																																																																																																																																																																																																																																																																																																																																																																																																																																																																																																																																																																					
F.A.	Fire Alarm	STL.	Steel																																																																																																																																																																																																																																																																																																																																																																																																																																																																																																																																																																																																																																																																																																																																																																																																																																																																																																																																																																																																																																																																																																					
F.B.	Flat Bar	STOR.	Storage																																																																																																																																																																																																																																																																																																																																																																																																																																																																																																																																																																																																																																																																																																																																																																																																																																																																																																																																																																																																																																																																																																					
F.D.	Floor Drain	STRUCT.	Structural																																																																																																																																																																																																																																																																																																																																																																																																																																																																																																																																																																																																																																																																																																																																																																																																																																																																																																																																																																																																																																																																																																					
FDN.	Foundation	SUSP.	Suspended																																																																																																																																																																																																																																																																																																																																																																																																																																																																																																																																																																																																																																																																																																																																																																																																																																																																																																																																																																																																																																																																																																					
F.E.	Fire Extinguisher	SYM.	Symmetrical																																																																																																																																																																																																																																																																																																																																																																																																																																																																																																																																																																																																																																																																																																																																																																																																																																																																																																																																																																																																																																																																																																					
F.E.C.	Fire Extinguisher Cabinet	T.	Tread																																																																																																																																																																																																																																																																																																																																																																																																																																																																																																																																																																																																																																																																																																																																																																																																																																																																																																																																																																																																																																																																																																					
F.H.C.	Fire Hose Cabinet	TB.	Tack Board																																																																																																																																																																																																																																																																																																																																																																																																																																																																																																																																																																																																																																																																																																																																																																																																																																																																																																																																																																																																																																																																																																					
FIN.	Finish	T.B.	Towel Bar																																																																																																																																																																																																																																																																																																																																																																																																																																																																																																																																																																																																																																																																																																																																																																																																																																																																																																																																																																																																																																																																																																					
FLR.	Floor	T.O.C.	Top of Curb																																																																																																																																																																																																																																																																																																																																																																																																																																																																																																																																																																																																																																																																																																																																																																																																																																																																																																																																																																																																																																																																																																					
FLASH.	Flashing	TEL.	Telephone																																																																																																																																																																																																																																																																																																																																																																																																																																																																																																																																																																																																																																																																																																																																																																																																																																																																																																																																																																																																																																																																																																					
FLUOR.	Flourescent	TEMP.	Tempered																																																																																																																																																																																																																																																																																																																																																																																																																																																																																																																																																																																																																																																																																																																																																																																																																																																																																																																																																																																																																																																																																																					
F.O.C.	Face of Concrete	TER.	Terrazzo																																																																																																																																																																																																																																																																																																																																																																																																																																																																																																																																																																																																																																																																																																																																																																																																																																																																																																																																																																																																																																																																																																					
F.O.F.	Face of Finish	T.G.G.	Tongue and Groove																																																																																																																																																																																																																																																																																																																																																																																																																																																																																																																																																																																																																																																																																																																																																																																																																																																																																																																																																																																																																																																																																																					
F.O.S.	Face of Studs	THK.	Thick																																																																																																																																																																																																																																																																																																																																																																																																																																																																																																																																																																																																																																																																																																																																																																																																																																																																																																																																																																																																																																																																																																					
FPFG.	Fireproofing	T.P.D.	Top of Pavement																																																																																																																																																																																																																																																																																																																																																																																																																																																																																																																																																																																																																																																																																																																																																																																																																																																																																																																																																																																																																																																																																																					
F.P.S.C.	Fireproof Self Closing	T.V.	Toilet Paper Dispenser																																																																																																																																																																																																																																																																																																																																																																																																																																																																																																																																																																																																																																																																																																																																																																																																																																																																																																																																																																																																																																																																																																					
F.S.	Full Size	T.O.W.	Top of Wall																																																																																																																																																																																																																																																																																																																																																																																																																																																																																																																																																																																																																																																																																																																																																																																																																																																																																																																																																																																																																																																																																																					
FT.	Foot or Feet	TYP.	Typical																																																																																																																																																																																																																																																																																																																																																																																																																																																																																																																																																																																																																																																																																																																																																																																																																																																																																																																																																																																																																																																																																																					
FTG.	Footing	UNF.	Unfinished																																																																																																																																																																																																																																																																																																																																																																																																																																																																																																																																																																																																																																																																																																																																																																																																																																																																																																																																																																																																																																																																																																					
FURR.	Furring	U.O.N.	Unless Otherwise Noted																																																																																																																																																																																																																																																																																																																																																																																																																																																																																																																																																																																																																																																																																																																																																																																																																																																																																																																																																																																																																																																																																																					
FUT.	Future	UR.	Urinal																																																																																																																																																																																																																																																																																																																																																																																																																																																																																																																																																																																																																																																																																																																																																																																																																																																																																																																																																																																																																																																																																																					
GA.	Gage	VERT.	Vertical																																																																																																																																																																																																																																																																																																																																																																																																																																																																																																																																																																																																																																																																																																																																																																																																																																																																																																																																																																																																																																																																																																					
GALV.	Galvanized	VEST.	Vestibule																																																																																																																																																																																																																																																																																																																																																																																																																																																																																																																																																																																																																																																																																																																																																																																																																																																																																																																																																																																																																																																																																																					
G.B.	Grab Bar	V.C.T.	Vinyl Composition Tile																																																																																																																																																																																																																																																																																																																																																																																																																																																																																																																																																																																																																																																																																																																																																																																																																																																																																																																																																																																																																																																																																																					
GL.	Glass	V.W.C.	Vinyl Wall Covering																																																																																																																																																																																																																																																																																																																																																																																																																																																																																																																																																																																																																																																																																																																																																																																																																																																																																																																																																																																																																																																																																																					
GND.	Ground	W.	West																																																																																																																																																																																																																																																																																																																																																																																																																																																																																																																																																																																																																																																																																																																																																																																																																																																																																																																																																																																																																																																																																																					
GR.	Grade	W/	With																																																																																																																																																																																																																																																																																																																																																																																																																																																																																																																																																																																																																																																																																																																																																																																																																																																																																																																																																																																																																																																																																																					
GYP.	Gypsum	WB.	White Board																																																																																																																																																																																																																																																																																																																																																																																																																																																																																																																																																																																																																																																																																																																																																																																																																																																																																																																																																																																																																																																																																																					
G.W.B.	Gypsum Wallboard	W.C.	Water Closet																																																																																																																																																																																																																																																																																																																																																																																																																																																																																																																																																																																																																																																																																																																																																																																																																																																																																																																																																																																																																																																																																																					
G.W.T.	Glazed Wall Tile	WD.	Wood																																																																																																																																																																																																																																																																																																																																																																																																																																																																																																																																																																																																																																																																																																																																																																																																																																																																																																																																																																																																																																																																																																					
H.B.	Hose Bibb	W/O	Without																																																																																																																																																																																																																																																																																																																																																																																																																																																																																																																																																																																																																																																																																																																																																																																																																																																																																																																																																																																																																																																																																																					
H.C.	Hollow Core	WP.	Waterproof																																																																																																																																																																																																																																																																																																																																																																																																																																																																																																																																																																																																																																																																																																																																																																																																																																																																																																																																																																																																																																																																																																					
HDWD.	Hardwood	W.R.	Water Resistant																																																																																																																																																																																																																																																																																																																																																																																																																																																																																																																																																																																																																																																																																																																																																																																																																																																																																																																																																																																																																																																																																																					
HW.	Hardware	WSCT.	Wainscot																																																																																																																																																																																																																																																																																																																																																																																																																																																																																																																																																																																																																																																																																																																																																																																																																																																																																																																																																																																																																																																																																																					
H.M.	Hollow Metal	WT.	Weight																																																																																																																																																																																																																																																																																																																																																																																																																																																																																																																																																																																																																																																																																																																																																																																																																																																																																																																																																																																																																																																																																																					
HORIZ.	Horizontal	W.G.	Wire Glass																																																																																																																																																																																																																																																																																																																																																																																																																																																																																																																																																																																																																																																																																																																																																																																																																																																																																																																																																																																																																																																																																																					
H.P.	High Point																																																																																																																																																																																																																																																																																																																																																																																																																																																																																																																																																																																																																																																																																																																																																																																																																																																																																																																																																																																																																																																																																																							
HR.	Hour																																																																																																																																																																																																																																																																																																																																																																																																																																																																																																																																																																																																																																																																																																																																																																																																																																																																																																																																																																																																																																																																																																							
HGT.	Height																																																																																																																																																																																																																																																																																																																																																																																																																																																																																																																																																																																																																																																																																																																																																																																																																																																																																																																																																																																																																																																																																																							
I.D.	Inside Diameter																																																																																																																																																																																																																																																																																																																																																																																																																																																																																																																																																																																																																																																																																																																																																																																																																																																																																																																																																																																																																																																																																																							
IMP.	Insulated Metal Panel																																																																																																																																																																																																																																																																																																																																																																																																																																																																																																																																																																																																																																																																																																																																																																																																																																																																																																																																																																																																																																																																																																							
INSUL.	Insulation																																																																																																																																																																																																																																																																																																																																																																																																																																																																																																																																																																																																																																																																																																																																																																																																																																																																																																																																																																																																																																																																																																							
INT.	Interior																																																																																																																																																																																																																																																																																																																																																																																																																																																																																																																																																																																																																																																																																																																																																																																																																																																																																																																																																																																																																																																																																																							
JAN.	Janitor																																																																																																																																																																																																																																																																																																																																																																																																																																																																																																																																																																																																																																																																																																																																																																																																																																																																																																																																																																																																																																																																																																							
JT.	Joint																																																																																																																																																																																																																																																																																																																																																																																																																																																																																																																																																																																																																																																																																																																																																																																																																																																																																																																																																																																																																																																																																																							
KIT.	Kitchen																																																																																																																																																																																																																																																																																																																																																																																																																																																																																																																																																																																																																																																																																																																																																																																																																																																																																																																																																																																																																																																																																																							
	SITE NORTH		CENTER LINE																																																																																																																																																																																																																																																																																																																																																																																																																																																																																																																																																																																																																																																																																																																																																																																																																																																																																																																																																																																																																																																																																																					
	PROJECT NORTH		PARTITION TYPE DESIGNATION																																																																																																																																																																																																																																																																																																																																																																																																																																																																																																																																																																																																																																																																																																																																																																																																																																																																																																																																																																																																																																																																																																					
	WINDOW DESIGNATION		EXISTING SPOT ELEVATION																																																																																																																																																																																																																																																																																																																																																																																																																																																																																																																																																																																																																																																																																																																																																																																																																																																																																																																																																																																																																																																																																																					
	DOOR DESIGNATION		NEW SPOT ELEVATION																																																																																																																																																																																																																																																																																																																																																																																																																																																																																																																																																																																																																																																																																																																																																																																																																																																																																																																																																																																																																																																																																																					
	BREAK LINE		DETAIL TAG																																																																																																																																																																																																																																																																																																																																																																																																																																																																																																																																																																																																																																																																																																																																																																																																																																																																																																																																																																																																																																																																																																					
	CENTER LINE		SECTION TAG																																																																																																																																																																																																																																																																																																																																																																																																																																																																																																																																																																																																																																																																																																																																																																																																																																																																																																																																																																																																																																																																																																					
	OBJECT LINE		ELEVATION TAG																																																																																																																																																																																																																																																																																																																																																																																																																																																																																																																																																																																																																																																																																																																																																																																																																																																																																																																																																																																																																																																																																																					
	HIDDEN LINE		ROOM DESIGNATION																																																																																																																																																																																																																																																																																																																																																																																																																																																																																																																																																																																																																																																																																																																																																																																																																																																																																																																																																																																																																																																																																																					
	BOUNDARY OR PROPERTY LINE		REVISION CLOUD & DELTA																																																																																																																																																																																																																																																																																																																																																																																																																																																																																																																																																																																																																																																																																																																																																																																																																																																																																																																																																																																																																																																																																																					
	DATUM ELEVATION		COLUMN GRID																																																																																																																																																																																																																																																																																																																																																																																																																																																																																																																																																																																																																																																																																																																																																																																																																																																																																																																																																																																																																																																																																																					
<table><tr><td>DBL.</td><td>Double</td><td>EMR.</td><td>Elevator Machine Room</td><td>E.P.</td><td>Electrical Panelboard</td><td>EQ.</td><td>Equal</td><td>EQPT.</td><td>Equipment</td><td>E.W.C.</td><td>Electric Water Cooler</td><td>EXIST.</td><td>Existing</td><td>EXPO.</td><td>Exposed</td><td>EXP.</td><td>Expansion</td><td>EXT.</td><td>Exterior</td><td>EIFS.</td><td>Exterior Insulated Finish System</td><td>EXP.CONST.</td><td>Exposed Construction</td><td>F.A.</td><td>Fire Alarm</td><td>F.B.</td><td>Flat Bar</td><td>F.D.</td><td>Floor Drain</td><td>FDN.</td><td>Foundation</td><td>F.E.</td><td>Fire Extinguisher</td><td>F.E.C.</td><td>Fire Extinguisher Cabinet</td><td>F.H.C.</td><td>Fire Hose Cabinet</td><td>FIN.</td><td>Finish</td><td>FLR.</td><td>Floor</td><td>FLASH.</td><td>Flashing</td><td>FLUOR.</td><td>Flourescent</td><td>F.O.C.</td><td>Face of Concrete</td><td>F.O.F.</td><td>Face of Finish</td><td>F.O.S.</td><td>Face of Studs</td><td>FPFG.</td><td>Fireproofing</td><td>F.P.S.C.</td><td>Fireproof Self Closing</td><td>F.S.</td><td>Full Size</td><td>FT.</td><td>Foot or Feet</td><td>FTG.</td><td>Footing</td><td>FURR.</td><td>Furring</td><td>FUT.</td><td>Future</td><td>GA.</td><td>Gage</td><td>GALV.</td><td>Galvanized</td><td>G.B.</td><td>Grab Bar</td><td>GL.</td><td>Glass</td><td>GND.</td><td>Ground</td><td>GR.</td><td>Grade</td><td>GYP.</td><td>Gypsum</td><td>G.W.B.</td><td>Gypsum Wallboard</td><td>G.W.T.</td><td>Glazed Wall Tile</td><td>H.B.</td><td>Hose Bibb</td><td>H.C.</td><td>Hollow Core</td><td>HDWD.</td><td>Hardwood</td><td>H.M.</td><td>Hollow Metal</td><td>HORIZ.</td><td>Horizontal</td><td>H.P.</td><td>High Point</td><td>HR.</td><td>Hour</td><td>HGT.</td><td>Height</td><td>I.D.</td><td>Inside Diameter</td><td>IMP.</td><td>Insulated Metal Panel</td><td>INSUL.</td><td>Insulation</td><td>INT.</td><td>Interior</td><td>JAN.</td><td>Janitor</td><td>JT.</td><td>Joint</td><td>KIT.</td><td>Kitchen</td></tr><tr><td>DEPT.</td><td>Department</td><td>E.</td><td>East</td><td>EL.</td><td>Elevation</td><td>ELEC.</td><td>Electrical</td><td>ELEV.</td><td>Elevator</td><td>EMER.</td><td>Emergency</td><td>ENC.L.</td><td>Enclosure</td><td>E.P.</td><td>Electrical Panelboard</td><td>EQ.</td><td>Equal</td><td>EQPT.</td><td>Equipment</td><td>E.W.C.</td><td>Electric Water Cooler</td><td>EXIST.</td><td>Existing</td><td>EXPO.</td><td>Exposed</td><td>EXP.</td><td>Expansion</td><td>EXT.</td><td>Exterior</td><td>EIFS.</td><td>Exterior Insulated Finish System</td><td>EXP.CONST.</td><td>Exposed Construction</td><td>F.A.</td><td>Fire Alarm</td><td>F.B.</td><td>Flat Bar</td><td>F.D.</td><td>Floor Drain</td><td>FDN.</td><td>Foundation</td><td>F.E.</td><td>Fire Extinguisher</td><td>F.E.C.</td><td>Fire Extinguisher Cabinet</td><td>F.H.C.</td><td>Fire Hose Cabinet</td><td>FIN.</td><td>Finish</td><td>FLR.</td><td>Floor</td><td>FLASH.</td><td>Flashing</td><td>FLUOR.</td><td>Flourescent</td><td>F.O.C.</td><td>Face of Concrete</td><td>F.O.F.</td><td>Face of Finish</td><td>F.O.S.</td><td>Face of Studs</td><td>FPFG.</td><td>Fireproofing</td><td>F.P.S.C.</td><td>Fireproof Self Closing</td><td>F.S.</td><td>Full Size</td><td>FT.</td><td>Foot or Feet</td><td>FTG.</td><td>Footing</td><td>FURR.</td><td>Furring</td><td>FUT.</td><td>Future</td><td>GA.</td><td>Gage</td><td>GALV.</td><td>Galvanized</td><td>G.B.</td><td>Grab Bar</td><td>GL.</td><td>Glass</td><td>GND.</td><td>Ground</td><td>GR.</td><td>Grade</td><td>GYP.</td><td>Gypsum</td><td>G.W.B.</td><td>Gypsum Wallboard</td><td>G.W.T.</td><td>Glazed Wall Tile</td><td>H.B.</td><td>Hose Bibb</td><td>H.C.</td><td>Hollow Core</td><td>HDWD.</td><td>Hardwood</td><td>H.M.</td><td>Hollow Metal</td><td>HORIZ.</td><td>Horizontal</td><td>H.P.</td><td>High Point</td><td>HR.</td><td>Hour</td><td>HGT.</td><td>Height</td><td>I.D.</td><td>Inside Diameter</td><td>IMP.</td><td>Insulated Metal Panel</td><td>INSUL.</td><td>Insulation</td><td>INT.</td><td>Interior</td><td>JAN.</td><td>Janitor</td><td>JT.</td><td>Joint</td><td>KIT.</td><td>Kitchen</td></tr><tr><td>DET.</td><td>Detail</td><td>E.J.</td><td>Expansion Joint</td><td>EL.</td><td>Elevation</td><td>ELEC.</td><td>Electrical</td><td>ELEV.</td><td>Elevator</td><td>EMER.</td><td>Emergency</td><td>ENC.L.</td><td>Enclosure</td><td>E.P.</td><td>Electrical Panelboard</td><td>EQ.</td><td>Equal</td><td>EQPT.</td><td>Equipment</td><td>E.W.C.</td><td>Electric Water Cooler</td><td>EXIST.</td><td>Existing</td><td>EXPO.</td><td>Exposed</td><td>EXP.</td><td>Expansion</td><td>EXT.</td><td>Exterior</td><td>EIFS.</td><td>Exterior Insulated Finish System</td><td>EXP.CONST.</td><td>Exposed Construction</td><td>F.A.</td><td>Fire Alarm</td><td>F.B.</td><td>Flat Bar</td><td>F.D.</td><td>Floor Drain</td><td>FDN.</td><td>Foundation</td><td>F.E.</td><td>Fire Extinguisher</td><td>F.E.C.</td><td>Fire Extinguisher Cabinet</td><td>F.H.C.</td><td>Fire Hose Cabinet</td><td>FIN.</td><td>Finish</td><td>FLR.</td><td>Floor</td><td>FLASH.</td><td>Flashing</td><td>FLUOR.</td><td>Flourescent</td><td>F.O.C.</td><td>Face of Concrete</td><td>F.O.F.</td><td>Face of Finish</td><td>F.O.S.</td><td>Face of Studs</td><td>FPFG.</td><td>Fireproofing</td><td>F.P.S.C.</td><td>Fireproof Self Closing</td><td>F.S.</td><td>Full Size</td><td>FT.</td><td>Foot or Feet</td><td>FTG.</td><td>Footing</td><td>FURR.</td><td>Furring</td><td>FUT.</td><td>Future</td><td>GA.</td><td>Gage</td><td>GALV.</td><td>Galvanized</td><td>G.B.</td><td>Grab Bar</td><td>GL.</td><td>Glass</td><td>GND.</td><td>Ground</td><td>GR.</td><td>Grade</td><td>GYP.</td><td>Gypsum</td><td>G.W.B.</td><td>Gypsum Wallboard</td><td>G.W.T.</td><td>Glazed Wall Tile</td><td>H.B.</td><td>Hose Bibb</td><td>H.C.</td><td>Hollow Core</td><td>HDWD.</td><td>Hardwood</td><td>H.M.</td><td>Hollow Metal</td><td>HORIZ.</td><td>Horizontal</td><td>H.P.</td><td>High Point</td><td>HR.</td><td>Hour</td><td>HGT.</td><td>Height</td><td>I.D.</td><td>Inside Diameter</td><td>IMP.</td><td>Insulated Metal Panel</td><td>INSUL.</td><td>Insulation</td><td>INT.</td><td>Interior</td><td>JAN.</td><td>Janitor</td><td>JT.</td><td>Joint</td><td>KIT.</td><td>Kitchen</td></tr><tr><td>DIA.</td><td>Diameter</td><td>E.J.</td><td>Expansion Joint</td><td>EL.</td><td>Elevation</td><td>ELEC.</td><td>Electrical</td><td>ELEV.</td><td>Elevator</td><td>EMER.</td><td>Emergency</td><td>ENC.L.</td><td>Enclosure</td><td>E.P.</td><td>Electrical Panelboard</td><td>EQ.</td><td>Equal</td><td>EQPT.</td><td>Equipment</td><td>E.W.C.</td><td>Electric Water Cooler</td><td>EXIST.</td><td>Existing</td><td>EXPO.</td><td>Exposed</td><td>EXP.</td><td>Expansion</td><td>EXT.</td><td>Exterior</td><td>EIFS.</td><td>Exterior Insulated Finish System</td><td>EXP.CONST.</td><td>Exposed Construction</td><td>F.A.</td><td>Fire Alarm</td><td>F.B.</td><td>Flat Bar</td><td>F.D.</td><td>Floor Drain</td><td>FDN.</td><td>Foundation</td><td>F.E.</td><td>Fire Extinguisher</td><td>F.E.C.</td><td>Fire Extinguisher Cabinet</td><td>F.H.C.</td><td>Fire Hose Cabinet</td><td>FIN.</td><td>Finish</td><td>FLR.</td><td>Floor</td><td>FLASH.</td><td>Flashing</td><td>FLUOR.</td><td>Flourescent</td><td>F.O.C.</td><td>Face of Concrete</td><td>F.O.F.</td><td>Face of Finish</td><td>F.O.S.</td><td>Face of Studs</td><td>FPFG.</td><td>Fireproofing</td><td>F.P.S.C.</td><td>Fireproof Self Closing</td><td>F.S.</td><td>Full Size</td><td>FT.</td><td>Foot or Feet</td><td>FTG.</td><td>Footing</td><td>FURR.</td><td>Furring</td><td>FUT.</td><td>Future</td><td>GA.</td><td>Gage</td><td>GALV.</td><td>Galvanized</td><td>G.B.</td><td>Grab Bar</td><td>GL.</td><td>Glass</td><td>GND.</td><td>Ground</td><td>GR.</td><td>Grade</td><td>GYP.</td><td>Gypsum</td><td>G.W.B.</td><td>Gypsum Wallboard</td><td>G.W.T.</td><td>Glazed Wall Tile</td><td>H.B.</td><td>Hose Bibb</td><td>H.C.</td><td>Hollow Core</td><td>HDWD.</td><td>Hardwood</td><td>H.M.</td><td>Hollow Metal</td><td>HORIZ.</td><td>Horizontal</td><td>H.P.</td><td>High Point</td><td>HR.</td><td>Hour</td><td>HGT.</td><td>Height</td><td>I.D.</td><td>Inside Diameter</td><td>IMP.</td><td>Insulated Metal Panel</td><td>INSUL.</td><td>Insulation</td><td>INT.</td><td>Interior</td><td>JAN.</td><td>Janitor</td><td>JT.</td><td>Joint</td><td>KIT.</td><td>Kitchen</td></tr><tr><td>DISP.</td><td>Dispenser</td><td>DN.</td><td>Down</td><td>DR.</td><td>Door</td><td>DS.</td><td>Downspout</td><td>D.S.P.</td><td>Dry Standpipe</td><td>DWR.</td><td>Drawer</td><td>DWG.</td><td>Drawing</td><td>EMR.</td><td>Elevator Machine Room</td><td>E.</td><td>East</td><td>EA.</td><td>Each</td><td>E.J.</td><td>Expansion Joint</td><td>EL.</td><td>Elevation</td><td>ELEC.</td><td>Electrical</td><td>ELEV.</td><td>Elevator</td><td>EMER.</td><td>Emergency</td><td>ENC.L.</td><td>Enclosure</td><td>E.P.</td><td>Electrical Panelboard</td><td>EQ.</td><td>Equal</td><td>EQPT.</td><td>Equipment</td><td>E.W.C.</td><td>Electric Water Cooler</td><td>EXIST.</td><td>Existing</td><td>EXPO.</td><td>Exposed</td><td>EXP.</td><td>Expansion</td><td>EXT.</td><td>Exterior</td><td>EIFS.</td><td>Exterior Insulated Finish System</td><td>EXP.CONST.</td><td>Exposed Construction</td><td>F.A.</td><td>Fire Alarm</td><td>F.B.</td><td>Flat Bar</td><td>F.D.</td><td>Floor Drain</td><td>FDN.</td><td>Foundation</td><td>F.E.</td><td>Fire Extinguisher</td><td>F.E.C.</td><td>Fire Extinguisher Cabinet</td><td>F.H.C.</td><td>Fire Hose Cabinet</td><td>FIN.</td><td>Finish</td><td>FLR.</td><td>Floor</td><td>FLASH.</td><td>Flashing</td><td>FLUOR.</td><td>Flourescent</td><td>F.O.C.</td><td>Face of Concrete</td><td>F.O.F.</td><td>Face of Finish</td><td>F.O.S.</td><td>Face of Studs</td><td>FPFG.</td><td>Fireproofing</td><td>F.P.S.C.</td><td>Fireproof Self Closing</td><td>F.S.</td><td>Full Size</td><td>FT.</td><td>Foot or Feet</td><td>FTG.</td><td>Footing</td><td>FURR.</td><td>Furring</td><td>FUT.</td><td>Future</td><td>GA.</td><td>Gage</td><td>GALV.</td><td>Galvanized</td><td>G.B.</td><td>Grab Bar</td><td>GL.</td><td>Glass</td><td>GND.</td><td>Ground</td><td>GR.</td><td>Grade</td><td>GYP.</td><td>Gypsum</td><td>G.W.B.</td><td>Gypsum Wallboard</td><td>G.W.T.</td><td>Glazed Wall Tile</td><td>H.B.</td><td>Hose Bibb</td><td>H.C.</td><td>Hollow Core</td><td>HDWD.</td><td>Hardwood</td><td>H.M.</td><td>Hollow Metal</td><td>HORIZ.</td><td>Horizontal</td><td>H.P.</td><td>High Point</td><td>HR.</td><td>Hour</td><td>HGT.</td><td>Height</td><td>I.D.</td><td>Inside Diameter</td><td>IMP.</td><td>Insulated Metal Panel</td><td>INSUL.</td><td>Insulation</td><td>INT.</td><td>Interior</td><td>JAN.</td><td>Janitor</td><td>JT.</td><td>Joint</td><td>KIT.</td><td>Kitchen</td></tr><tr><td>DN.</td><td>Down</td><td>DR.</td><td>Door</td><td>DS.</td><td>Downspout</td><td>D.S.P.</td><td>Dry Standpipe</td><td>DWR.</td><td>Drawer</td><td>DWG.</td><td>Drawing</td><td>EMR.</td><td>Elevator Machine Room</td><td>E.</td><td>East</td><td>EA.</td><td>Each</td><td>E.J.</td><td>Expansion Joint</td><td>EL.</td><td>Elevation</td><td>ELEC.</td><td>Electrical</td><td>ELEV.</td><td>Elevator</td><td>EMER.</td><td>Emergency</td><td>ENC.L.</td><td>Enclosure</td><td>E.P.</td><td>Electrical Panelboard</td><td>EQ.</td><td>Equal</td><td>EQPT.</td><td>Equipment</td><td>E.W.C.</td><td>Electric Water Cooler</td><td>EXIST.</td><td>Existing</td><td>EXPO.</td><td>Exposed</td><td>EXP.</td><td>Expansion</td><td>EXT.</td><td>Exterior</td><td>EIFS.</td><td>Exterior Insulated Finish System</td><td>EXP.CONST.</td><td>Exposed Construction</td><td>F.A.</td><td>Fire Alarm</td><td>F.B.</td><td>Flat Bar</td><td>F.D.</td><td>Floor Drain</td><td>FDN.</td><td>Foundation</td><td>F.E.</td><td>Fire Extinguisher</td><td>F.E.C.</td><td>Fire Extinguisher Cabinet</td><td>F.H.C.</td><td>Fire Hose Cabinet</td><td>FIN.</td><td>Finish</td><td>FLR.</td><td>Floor</td><td>FLASH.</td><td>Flashing</td><td>FLUOR.</td><td>Flourescent</td><td>F.O.C.</td><td>Face of Concrete</td><td>F.O.F.</td><td>Face of Finish</td><td>F.O.S.</td><td>Face of Studs</td><td>FPFG.</td><td>Fireproofing</td><td>F.P.S.C.</td><td>Fireproof Self Closing</td><td>F.S.</td><td>Full Size</td><td>FT.</td><td>Foot or Feet</td><td>FTG.</td><td>Footing</td><td>FURR.</td><td>Furring</td><td>FUT.</td><td>Future</td><td>GA.</td><td>Gage</td><td>GALV.</td><td>Galvanized</td><td>G.B.</td><td>Grab Bar</td><td>GL.</td><td>Glass</td><td>GND.</td><td>Ground</td><td>GR.</td><td>Grade</td><td>GYP.</td><td>Gypsum</td><td>G.W.B.</td><td>Gypsum Wallboard</td><td>G.W.T.</td><td>Glazed Wall Tile</td><td>H.B.</td><td>Hose Bibb</td><td>H.C.</td><td>Hollow Core</td><td>HDWD.</td><td>Hardwood</td><td>H.M.</td><td>Hollow Metal</td><td>HORIZ.</td><td>Horizontal</td><td>H.P.</td><td>High Point</td><td>HR.</td><td>Hour</td><td>HGT.</td><td>Height</td><td>I.D.</td><td>Inside Diameter</td><td>IMP.</td><td>Insulated Metal Panel</td><td>INSUL.</td><td>Insulation</td><td>INT.</td><td>Interior</td><td>JAN.</td><td>Janitor</td><td>JT.</td><td>Joint</td><td>KIT.</td><td>Kitchen</td></tr><tr><td>DR.</td><td>Door</td><td>DS.</td><td>Downspout</td><td>D.S.P.</td><td>Dry Standpipe</td><td>DWR.</td><td>Drawer</td><td>DWG.</td><td>Drawing</td><td>EMR.</td><td>Elevator Machine Room</td><td>E.</td><td>East</td><td>EA.</td><td>Each</td><td>E.J.</td><td>Expansion Joint</td><td>EL.</td><td>Elevation</td><td>ELEC.</td><td>Electrical</td><td>ELEV.</td><td>Elevator</td><td>EMER.</td><td>Emergency</td><td>ENC.L.</td><td>Enclosure</td><td>E.P.</td><td>Electrical Panelboard</td><td>EQ.</td><td>Equal</td><td>EQPT.</td><td>Equipment</td><td>E.W.C.</td><td>Electric Water Cooler</td><td>EXIST.</td><td>Existing</td><td>EXPO.</td><td>Exposed</td><td>EXP.</td><td>Expansion</td><td>EXT.</td><td>Exterior</td><td>EIFS.</td><td>Exterior Insulated Finish System</td><td>EXP.CONST.</td><td>Exposed Construction</td><td>F.A.</td><td>Fire Alarm</td><td>F.B.</td><td>Flat Bar</td><td>F.D.</td><td>Floor Drain</td><td>FDN.</td><td>Foundation</td><td>F.E.</td><td>Fire Extinguisher</td><td>F.E.C.</td><td>Fire Extinguisher Cabinet</td><td>F.H.C.</td><td>Fire Hose Cabinet</td><td>FIN.</td><td>Finish</td><td>FLR.</td><td>Floor</td><td>FLASH.</td><td>Flashing</td><td>FLUOR.</td><td>Flourescent</td><td>F.O.C.</td><td>Face of Concrete</td><td>F.O.F.</td><td>Face of Finish</td><td>F.O.S.</td><td>Face of Studs</td><td>FPFG.</td><td>Fireproofing</td><td>F.P.S.C.</td><td>Fireproof Self Closing</td><td>F.S.</td><td>Full Size</td><td>FT.</td><td>Foot or Feet</td><td>FTG.</td><td>Footing</td><td>FURR.</td><td>Furring</td><td>FUT.</td><td>Future</td><td>GA.</td><td>Gage</td><td>GALV.</td><td>Galvanized</td><td>G.B.</td><td>Grab Bar</td><td>GL.</td><td>Glass</td><td>GND.</td><td>Ground</td><td>GR.</td><td>Grade</td><td>GYP.</td><td>Gypsum</td><td>G.W.B.</td><td>Gypsum Wallboard</td><td>G.W.T.</td><td>Glazed Wall Tile</td><td>H.B.</td><td>Hose Bibb</td><td>H.C.</td><td>Hollow Core</td><td>HDWD.</td><td>Hardwood</td><td>H.M.</td><td>Hollow Metal</td><td>HORIZ.</td><td>Horizontal</td><td>H.P.</td><td>High Point</td><td>HR.</td><td>Hour</td><td>HGT.</td><td>Height</td><td>I.D.</td><td>Inside Diameter</td><td>IMP.</td><td>Insulated Metal Panel</td><td>INSUL.</td><td>Insulation</td><td>INT.</td><td>Interior</td><td>JAN.</td><td>Janitor</td><td>JT.</td><td>Joint</td><td>KIT.</td><td>Kitchen</td></tr><tr><td>REF.</td><td>Reference</td><td>REFR.</td><td>Refrigerator</td><td>RGR.</td><td>Register</td><td>REINF.</td><td>Reinforced</td><td>REQD.</td><td>Required</td><td>RESIL.</td><td>Resilient</td><td>REV.</td><td>Revision</td><td>R.F.#</td><td>Roof Fan #</td><td>R.H.</td><td>Roof Hatch</td><td>RM.</td><td>Room</td><td>R.O.</td><td>Rough Opening</td><td>R.O.B.</td><td>Run of Bank</td><td>R.O.W.</td><td>Right of Way</td><td>RWD.</td><td>Redwood</td><td>R.W.L.</td><td>Rain Water Leader</td><td>S.</td><td>South</td><td>S.C.</td><td>Solid Core</td><td>S.C.D.</td><td>Seat Cover Dispenser</td><td>SCHED.</td><td>Schedule</td><td>S.D.</td><td>Soap Dispenser</td><td>SECT.</td><td>Section</td><td>SHR.</td><td>Shelf</td><td>SHT.</td><td>Shower</td><td>SIM.</td><td>Sheet</td><td></td><td>Similar</td><td>SPEC.</td><td>Specification</td><td>SQ.</td><td>Square</td><td>S.S.</td><td>Stainless Steel</td><td>S.SK.</td><td>Service Sink</td><td>STA.</td><td>Station</td><td>S.T.C.</td><td>Sound Transmission Class</td><td>STD.</td><td>Standard</td><td>STL.</td><td>Steel</td><td>STOR.</td><td>Storage</td><td>STRUCT.</td><td>Structural</td><td>SUSP.</td><td>Suspended</td><td>SYM.</td><td>Symmetrical</td><td>T.</td><td>Tread</td><td>TB.</td><td>Tack Board</td><td>T.B.</td><td>Towel Bar</td><td>T.O.C.</td><td>Top of Curb</td><td>TEL.</td><td>Telephone</td><td>TEMP.</td><td>Tempered</td><td>TER.</td><td>Terrazzo</td><td>T.G.G.</td><td>Tongue and Groove</td><td>THK.</td><td>Thick</td><td>T.P.D.</td><td>Top of Pavement</td><td>T.V.</td><td>Toilet Paper Dispenser</td><td>T.O.W.</td><td>Top of Wall</td><td>TYP.</td><td>Typical</td><td>UNF.</td><td>Unfinished</td><td>U.O.N.</td><td>Unless Otherwise Noted</td><td>UR.</td><td>Urinal</td><td>VERT.</td><td>Vertical</td><td>VEST.</td><td>Vestibule</td><td>V.C.T.</td><td>Vinyl Composition Tile</td><td>V.W.C.</td><td>Vinyl Wall Covering</td><td>W.</td><td>West</td><td>W/</td><td>With</td><td>WB.</td><td>White Board</td><td>W.C.</td><td>Water Closet</td><td>WD.</td><td>Wood</td><td>W/O</td><td>Without</td><td>WP.</td><td>Waterproof</td><td>W.R.</td><td>Water Resistant</td><td>WSCT.</td><td>Wainscot</td><td>WT.</td><td>Weight</td><td>W.G.</td><td>Wire Glass</td></tr></table>	DBL.	Double	EMR.	Elevator Machine Room	E.P.	Electrical Panelboard	EQ.	Equal	EQPT.	Equipment	E.W.C.	Electric Water Cooler	EXIST.	Existing	EXPO.	Exposed	EXP.	Expansion	EXT.	Exterior	EIFS.	Exterior Insulated Finish System	EXP.CONST.	Exposed Construction	F.A.	Fire Alarm	F.B.	Flat Bar	F.D.	Floor Drain	FDN.	Foundation	F.E.	Fire Extinguisher	F.E.C.	Fire Extinguisher Cabinet	F.H.C.	Fire Hose Cabinet	FIN.	Finish	FLR.	Floor	FLASH.	Flashing	FLUOR.	Flourescent	F.O.C.	Face of Concrete	F.O.F.	Face of Finish	F.O.S.	Face of Studs	FPFG.	Fireproofing	F.P.S.C.	Fireproof Self Closing	F.S.	Full Size	FT.	Foot or Feet	FTG.	Footing	FURR.	Furring	FUT.	Future	GA.	Gage	GALV.	Galvanized	G.B.	Grab Bar	GL.	Glass	GND.	Ground	GR.	Grade	GYP.	Gypsum	G.W.B.	Gypsum Wallboard	G.W.T.	Glazed Wall Tile	H.B.	Hose Bibb	H.C.	Hollow Core	HDWD.	Hardwood	H.M.	Hollow Metal	HORIZ.	Horizontal	H.P.	High Point	HR.	Hour	HGT.	Height	I.D.	Inside Diameter	IMP.	Insulated Metal Panel	INSUL.	Insulation	INT.	Interior	JAN.	Janitor	JT.	Joint	KIT.	Kitchen	DEPT.	Department	E.	East	EL.	Elevation	ELEC.	Electrical	ELEV.	Elevator	EMER.	Emergency	ENC.L.	Enclosure	E.P.	Electrical Panelboard	EQ.	Equal	EQPT.	Equipment	E.W.C.	Electric Water Cooler	EXIST.	Existing	EXPO.	Exposed	EXP.	Expansion	EXT.	Exterior	EIFS.	Exterior Insulated Finish System	EXP.CONST.	Exposed Construction	F.A.	Fire Alarm	F.B.	Flat Bar	F.D.	Floor Drain	FDN.	Foundation	F.E.	Fire Extinguisher	F.E.C.	Fire Extinguisher Cabinet	F.H.C.	Fire Hose Cabinet	FIN.	Finish	FLR.	Floor	FLASH.	Flashing	FLUOR.	Flourescent	F.O.C.	Face of Concrete	F.O.F.	Face of Finish	F.O.S.	Face of Studs	FPFG.	Fireproofing	F.P.S.C.	Fireproof Self Closing	F.S.	Full Size	FT.	Foot or Feet	FTG.	Footing	FURR.	Furring	FUT.	Future	GA.	Gage	GALV.	Galvanized	G.B.	Grab Bar	GL.	Glass	GND.	Ground	GR.	Grade	GYP.	Gypsum	G.W.B.	Gypsum Wallboard	G.W.T.	Glazed Wall Tile	H.B.	Hose Bibb	H.C.	Hollow Core	HDWD.	Hardwood	H.M.	Hollow Metal	HORIZ.	Horizontal	H.P.	High Point	HR.	Hour	HGT.	Height	I.D.	Inside Diameter	IMP.	Insulated Metal Panel	INSUL.	Insulation	INT.	Interior	JAN.	Janitor	JT.	Joint	KIT.	Kitchen	DET.	Detail	E.J.	Expansion Joint	EL.	Elevation	ELEC.	Electrical	ELEV.	Elevator	EMER.	Emergency	ENC.L.	Enclosure	E.P.	Electrical Panelboard	EQ.	Equal	EQPT.	Equipment	E.W.C.	Electric Water Cooler	EXIST.	Existing	EXPO.	Exposed	EXP.	Expansion	EXT.	Exterior	EIFS.	Exterior Insulated Finish System	EXP.CONST.	Exposed Construction	F.A.	Fire Alarm	F.B.	Flat Bar	F.D.	Floor Drain	FDN.	Foundation	F.E.	Fire Extinguisher	F.E.C.	Fire Extinguisher Cabinet	F.H.C.	Fire Hose Cabinet	FIN.	Finish	FLR.	Floor	FLASH.	Flashing	FLUOR.	Flourescent	F.O.C.	Face of Concrete	F.O.F.	Face of Finish	F.O.S.	Face of Studs	FPFG.	Fireproofing	F.P.S.C.	Fireproof Self Closing	F.S.	Full Size	FT.	Foot or Feet	FTG.	Footing	FURR.	Furring	FUT.	Future	GA.	Gage	GALV.	Galvanized	G.B.	Grab Bar	GL.	Glass	GND.	Ground	GR.	Grade	GYP.	Gypsum	G.W.B.	Gypsum Wallboard	G.W.T.	Glazed Wall Tile	H.B.	Hose Bibb	H.C.	Hollow Core	HDWD.	Hardwood	H.M.	Hollow Metal	HORIZ.	Horizontal	H.P.	High Point	HR.	Hour	HGT.	Height	I.D.	Inside Diameter	IMP.	Insulated Metal Panel	INSUL.	Insulation	INT.	Interior	JAN.	Janitor	JT.	Joint	KIT.	Kitchen	DIA.	Diameter	E.J.	Expansion Joint	EL.	Elevation	ELEC.	Electrical	ELEV.	Elevator	EMER.	Emergency	ENC.L.	Enclosure	E.P.	Electrical Panelboard	EQ.	Equal	EQPT.	Equipment	E.W.C.	Electric Water Cooler	EXIST.	Existing	EXPO.	Exposed	EXP.	Expansion	EXT.	Exterior	EIFS.	Exterior Insulated Finish System	EXP.CONST.	Exposed Construction	F.A.	Fire Alarm	F.B.	Flat Bar	F.D.	Floor Drain	FDN.	Foundation	F.E.	Fire Extinguisher	F.E.C.	Fire Extinguisher Cabinet	F.H.C.	Fire Hose Cabinet	FIN.	Finish	FLR.	Floor	FLASH.	Flashing	FLUOR.	Flourescent	F.O.C.	Face of Concrete	F.O.F.	Face of Finish	F.O.S.	Face of Studs	FPFG.	Fireproofing	F.P.S.C.	Fireproof Self Closing	F.S.	Full Size	FT.	Foot or Feet	FTG.	Footing	FURR.	Furring	FUT.	Future	GA.	Gage	GALV.	Galvanized	G.B.	Grab Bar	GL.	Glass	GND.	Ground	GR.	Grade	GYP.	Gypsum	G.W.B.	Gypsum Wallboard	G.W.T.	Glazed Wall Tile	H.B.	Hose Bibb	H.C.	Hollow Core	HDWD.	Hardwood	H.M.	Hollow Metal	HORIZ.	Horizontal	H.P.	High Point	HR.	Hour	HGT.	Height	I.D.	Inside Diameter	IMP.	Insulated Metal Panel	INSUL.	Insulation	INT.	Interior	JAN.	Janitor	JT.	Joint	KIT.	Kitchen	DISP.	Dispenser	DN.	Down	DR.	Door	DS.	Downspout	D.S.P.	Dry Standpipe	DWR.	Drawer	DWG.	Drawing	EMR.	Elevator Machine Room	E.	East	EA.	Each	E.J.	Expansion Joint	EL.	Elevation	ELEC.	Electrical	ELEV.	Elevator	EMER.	Emergency	ENC.L.	Enclosure	E.P.	Electrical Panelboard	EQ.	Equal	EQPT.	Equipment	E.W.C.	Electric Water Cooler	EXIST.	Existing	EXPO.	Exposed	EXP.	Expansion	EXT.	Exterior	EIFS.	Exterior Insulated Finish System	EXP.CONST.	Exposed Construction	F.A.	Fire Alarm	F.B.	Flat Bar	F.D.	Floor Drain	FDN.	Foundation	F.E.	Fire Extinguisher	F.E.C.	Fire Extinguisher Cabinet	F.H.C.	Fire Hose Cabinet	FIN.	Finish	FLR.	Floor	FLASH.	Flashing	FLUOR.	Flourescent	F.O.C.	Face of Concrete	F.O.F.	Face of Finish	F.O.S.	Face of Studs	FPFG.	Fireproofing	F.P.S.C.	Fireproof Self Closing	F.S.	Full Size	FT.	Foot or Feet	FTG.	Footing	FURR.	Furring	FUT.	Future	GA.	Gage	GALV.	Galvanized	G.B.	Grab Bar	GL.	Glass	GND.	Ground	GR.	Grade	GYP.	Gypsum	G.W.B.	Gypsum Wallboard	G.W.T.	Glazed Wall Tile	H.B.	Hose Bibb	H.C.	Hollow Core	HDWD.	Hardwood	H.M.	Hollow Metal	HORIZ.	Horizontal	H.P.	High Point	HR.	Hour	HGT.	Height	I.D.	Inside Diameter	IMP.	Insulated Metal Panel	INSUL.	Insulation	INT.	Interior	JAN.	Janitor	JT.	Joint	KIT.	Kitchen	DN.	Down	DR.	Door	DS.	Downspout	D.S.P.	Dry Standpipe	DWR.	Drawer	DWG.	Drawing	EMR.	Elevator Machine Room	E.	East	EA.	Each	E.J.	Expansion Joint	EL.	Elevation	ELEC.	Electrical	ELEV.	Elevator	EMER.	Emergency	ENC.L.	Enclosure	E.P.	Electrical Panelboard	EQ.	Equal	EQPT.	Equipment	E.W.C.	Electric Water Cooler	EXIST.	Existing	EXPO.	Exposed	EXP.	Expansion	EXT.	Exterior	EIFS.	Exterior Insulated Finish System	EXP.CONST.	Exposed Construction	F.A.	Fire Alarm	F.B.	Flat Bar	F.D.	Floor Drain	FDN.	Foundation	F.E.	Fire Extinguisher	F.E.C.	Fire Extinguisher Cabinet	F.H.C.	Fire Hose Cabinet	FIN.	Finish	FLR.	Floor	FLASH.	Flashing	FLUOR.	Flourescent	F.O.C.	Face of Concrete	F.O.F.	Face of Finish	F.O.S.	Face of Studs	FPFG.	Fireproofing	F.P.S.C.	Fireproof Self Closing	F.S.	Full Size	FT.	Foot or Feet	FTG.	Footing	FURR.	Furring	FUT.	Future	GA.	Gage	GALV.	Galvanized	G.B.	Grab Bar	GL.	Glass	GND.	Ground	GR.	Grade	GYP.	Gypsum	G.W.B.	Gypsum Wallboard	G.W.T.	Glazed Wall Tile	H.B.	Hose Bibb	H.C.	Hollow Core	HDWD.	Hardwood	H.M.	Hollow Metal	HORIZ.	Horizontal	H.P.	High Point	HR.	Hour	HGT.	Height	I.D.	Inside Diameter	IMP.	Insulated Metal Panel	INSUL.	Insulation	INT.	Interior	JAN.	Janitor	JT.	Joint	KIT.	Kitchen	DR.	Door	DS.	Downspout	D.S.P.	Dry Standpipe	DWR.	Drawer	DWG.	Drawing	EMR.	Elevator Machine Room	E.	East	EA.	Each	E.J.	Expansion Joint	EL.	Elevation	ELEC.	Electrical	ELEV.	Elevator	EMER.	Emergency	ENC.L.	Enclosure	E.P.	Electrical Panelboard	EQ.	Equal	EQPT.	Equipment	E.W.C.	Electric Water Cooler	EXIST.	Existing	EXPO.	Exposed	EXP.	Expansion	EXT.	Exterior	EIFS.	Exterior Insulated Finish System	EXP.CONST.	Exposed Construction	F.A.	Fire Alarm	F.B.	Flat Bar	F.D.	Floor Drain	FDN.	Foundation	F.E.	Fire Extinguisher	F.E.C.	Fire Extinguisher Cabinet	F.H.C.	Fire Hose Cabinet	FIN.	Finish	FLR.	Floor	FLASH.	Flashing	FLUOR.	Flourescent	F.O.C.	Face of Concrete	F.O.F.	Face of Finish	F.O.S.	Face of Studs	FPFG.	Fireproofing	F.P.S.C.	Fireproof Self Closing	F.S.	Full Size	FT.	Foot or Feet	FTG.	Footing	FURR.	Furring	FUT.	Future	GA.	Gage	GALV.	Galvanized	G.B.	Grab Bar	GL.	Glass	GND.	Ground	GR.	Grade	GYP.	Gypsum	G.W.B.	Gypsum Wallboard	G.W.T.	Glazed Wall Tile	H.B.	Hose Bibb	H.C.	Hollow Core	HDWD.	Hardwood	H.M.	Hollow Metal	HORIZ.	Horizontal	H.P.	High Point	HR.	Hour	HGT.	Height	I.D.	Inside Diameter	IMP.	Insulated Metal Panel	INSUL.	Insulation	INT.	Interior	JAN.	Janitor	JT.	Joint	KIT.	Kitchen	REF.	Reference	REFR.	Refrigerator	RGR.	Register	REINF.	Reinforced	REQD.	Required	RESIL.	Resilient	REV.	Revision	R.F.#	Roof Fan #	R.H.	Roof Hatch	RM.	Room	R.O.	Rough Opening	R.O.B.	Run of Bank	R.O.W.	Right of Way	RWD.	Redwood	R.W.L.	Rain Water Leader	S.	South	S.C.	Solid Core	S.C.D.	Seat Cover Dispenser	SCHED.	Schedule	S.D.	Soap Dispenser	SECT.	Section	SHR.	Shelf	SHT.	Shower	SIM.	Sheet		Similar	SPEC.	Specification	SQ.	Square	S.S.	Stainless Steel	S.SK.	Service Sink	STA.	Station	S.T.C.	Sound Transmission Class	STD.	Standard	STL.	Steel	STOR.	Storage	STRUCT.	Structural	SUSP.	Suspended	SYM.	Symmetrical	T.	Tread	TB.	Tack Board	T.B.	Towel Bar	T.O.C.	Top of Curb	TEL.	Telephone	TEMP.	Tempered	TER.	Terrazzo	T.G.G.	Tongue and Groove	THK.	Thick	T.P.D.	Top of Pavement	T.V.	Toilet Paper Dispenser	T.O.W.	Top of Wall	TYP.	Typical	UNF.	Unfinished	U.O.N.	Unless Otherwise Noted	UR.	Urinal	VERT.	Vertical	VEST.	Vestibule	V.C.T.	Vinyl Composition Tile	V.W.C.	Vinyl Wall Covering	W.	West	W/	With	WB.	White Board	W.C.	Water Closet	WD.	Wood	W/O	Without	WP.	Waterproof	W.R.	Water Resistant	WSCT.	Wainscot	WT.	Weight	W.G.	Wire Glass	<table><tr><td></td><td>SPRAYED FIREPROOFING</td><td></td><td>POROUS FILL</td></tr><tr><td></td><td>FINISH WOOD</td><td></td><td>STRUCTURAL CONCRETE</td></tr><tr><td></td><td>METAL</td><td></td><td>LIGHTWEIGHT CONCRETE</td></tr><tr><td></td><td>RIGID INSULATION</td><td></td><td>CONCRETE MASONRY UNIT</td></tr><tr><td></td><td>BATT INSULATION</td><td></td><td>BRICK VENEER</td></tr><tr><td></td></tr></table>		SPRAYED FIREPROOFING		POROUS FILL		FINISH WOOD		STRUCTURAL CONCRETE		METAL		LIGHTWEIGHT CONCRETE		RIGID INSULATION		CONCRETE MASONRY UNIT		BATT INSULATION		BRICK VENEER	
DBL.	Double	EMR.	Elevator Machine Room	E.P.	Electrical Panelboard	EQ.	Equal	EQPT.	Equipment	E.W.C.	Electric Water Cooler	EXIST.	Existing	EXPO.	Exposed	EXP.	Expansion	EXT.	Exterior	EIFS.	Exterior Insulated Finish System	EXP.CONST.	Exposed Construction	F.A.	Fire Alarm	F.B.	Flat Bar	F.D.	Floor Drain	FDN.	Foundation	F.E.	Fire Extinguisher	F.E.C.	Fire Extinguisher Cabinet	F.H.C.	Fire Hose Cabinet	FIN.	Finish	FLR.	Floor	FLASH.	Flashing	FLUOR.	Flourescent	F.O.C.	Face of Concrete	F.O.F.	Face of Finish	F.O.S.	Face of Studs	FPFG.	Fireproofing	F.P.S.C.	Fireproof Self Closing	F.S.	Full Size	FT.	Foot or Feet	FTG.	Footing	FURR.	Furring	FUT.	Future	GA.	Gage	GALV.	Galvanized	G.B.	Grab Bar	GL.	Glass	GND.	Ground	GR.	Grade	GYP.	Gypsum	G.W.B.	Gypsum Wallboard	G.W.T.	Glazed Wall Tile	H.B.	Hose Bibb	H.C.	Hollow Core	HDWD.	Hardwood	H.M.	Hollow Metal	HORIZ.	Horizontal	H.P.	High Point	HR.	Hour	HGT.	Height	I.D.	Inside Diameter	IMP.	Insulated Metal Panel	INSUL.	Insulation	INT.	Interior	JAN.	Janitor	JT.	Joint	KIT.	Kitchen																																																																																																																																																																																																																																																																																																																																																																																																																																																																																																																																																																																																																																																																																																																																																																																																																																																																																																																																																																																							
DEPT.	Department	E.	East	EL.	Elevation	ELEC.	Electrical	ELEV.	Elevator	EMER.	Emergency	ENC.L.	Enclosure	E.P.	Electrical Panelboard	EQ.	Equal	EQPT.	Equipment	E.W.C.	Electric Water Cooler	EXIST.	Existing	EXPO.	Exposed	EXP.	Expansion	EXT.	Exterior	EIFS.	Exterior Insulated Finish System	EXP.CONST.	Exposed Construction	F.A.	Fire Alarm	F.B.	Flat Bar	F.D.	Floor Drain	FDN.	Foundation	F.E.	Fire Extinguisher	F.E.C.	Fire Extinguisher Cabinet	F.H.C.	Fire Hose Cabinet	FIN.	Finish	FLR.	Floor	FLASH.	Flashing	FLUOR.	Flourescent	F.O.C.	Face of Concrete	F.O.F.	Face of Finish	F.O.S.	Face of Studs	FPFG.	Fireproofing	F.P.S.C.	Fireproof Self Closing	F.S.	Full Size	FT.	Foot or Feet	FTG.	Footing	FURR.	Furring	FUT.	Future	GA.	Gage	GALV.	Galvanized	G.B.	Grab Bar	GL.	Glass	GND.	Ground	GR.	Grade	GYP.	Gypsum	G.W.B.	Gypsum Wallboard	G.W.T.	Glazed Wall Tile	H.B.	Hose Bibb	H.C.	Hollow Core	HDWD.	Hardwood	H.M.	Hollow Metal	HORIZ.	Horizontal	H.P.	High Point	HR.	Hour	HGT.	Height	I.D.	Inside Diameter	IMP.	Insulated Metal Panel	INSUL.	Insulation	INT.	Interior	JAN.	Janitor	JT.	Joint	KIT.	Kitchen																																																																																																																																																																																																																																																																																																																																																																																																																																																																																																																																																																																																																																																																																																																																																																																																																																																																																																																																																																													
DET.	Detail	E.J.	Expansion Joint	EL.	Elevation	ELEC.	Electrical	ELEV.	Elevator	EMER.	Emergency	ENC.L.	Enclosure	E.P.	Electrical Panelboard	EQ.	Equal	EQPT.	Equipment	E.W.C.	Electric Water Cooler	EXIST.	Existing	EXPO.	Exposed	EXP.	Expansion	EXT.	Exterior	EIFS.	Exterior Insulated Finish System	EXP.CONST.	Exposed Construction	F.A.	Fire Alarm	F.B.	Flat Bar	F.D.	Floor Drain	FDN.	Foundation	F.E.	Fire Extinguisher	F.E.C.	Fire Extinguisher Cabinet	F.H.C.	Fire Hose Cabinet	FIN.	Finish	FLR.	Floor	FLASH.	Flashing	FLUOR.	Flourescent	F.O.C.	Face of Concrete	F.O.F.	Face of Finish	F.O.S.	Face of Studs	FPFG.	Fireproofing	F.P.S.C.	Fireproof Self Closing	F.S.	Full Size	FT.	Foot or Feet	FTG.	Footing	FURR.	Furring	FUT.	Future	GA.	Gage	GALV.	Galvanized	G.B.	Grab Bar	GL.	Glass	GND.	Ground	GR.	Grade	GYP.	Gypsum	G.W.B.	Gypsum Wallboard	G.W.T.	Glazed Wall Tile	H.B.	Hose Bibb	H.C.	Hollow Core	HDWD.	Hardwood	H.M.	Hollow Metal	HORIZ.	Horizontal	H.P.	High Point	HR.	Hour	HGT.	Height	I.D.	Inside Diameter	IMP.	Insulated Metal Panel	INSUL.	Insulation	INT.	Interior	JAN.	Janitor	JT.	Joint	KIT.	Kitchen																																																																																																																																																																																																																																																																																																																																																																																																																																																																																																																																																																																																																																																																																																																																																																																																																																																																																																																																																																													
DIA.	Diameter	E.J.	Expansion Joint	EL.	Elevation	ELEC.	Electrical	ELEV.	Elevator	EMER.	Emergency	ENC.L.	Enclosure	E.P.	Electrical Panelboard	EQ.	Equal	EQPT.	Equipment	E.W.C.	Electric Water Cooler	EXIST.	Existing	EXPO.	Exposed	EXP.	Expansion	EXT.	Exterior	EIFS.	Exterior Insulated Finish System	EXP.CONST.	Exposed Construction	F.A.	Fire Alarm	F.B.	Flat Bar	F.D.	Floor Drain	FDN.	Foundation	F.E.	Fire Extinguisher	F.E.C.	Fire Extinguisher Cabinet	F.H.C.	Fire Hose Cabinet	FIN.	Finish	FLR.	Floor	FLASH.	Flashing	FLUOR.	Flourescent	F.O.C.	Face of Concrete	F.O.F.	Face of Finish	F.O.S.	Face of Studs	FPFG.	Fireproofing	F.P.S.C.	Fireproof Self Closing	F.S.	Full Size	FT.	Foot or Feet	FTG.	Footing	FURR.	Furring	FUT.	Future	GA.	Gage	GALV.	Galvanized	G.B.	Grab Bar	GL.	Glass	GND.	Ground	GR.	Grade	GYP.	Gypsum	G.W.B.	Gypsum Wallboard	G.W.T.	Glazed Wall Tile	H.B.	Hose Bibb	H.C.	Hollow Core	HDWD.	Hardwood	H.M.	Hollow Metal	HORIZ.	Horizontal	H.P.	High Point	HR.	Hour	HGT.	Height	I.D.	Inside Diameter	IMP.	Insulated Metal Panel	INSUL.	Insulation	INT.	Interior	JAN.	Janitor	JT.	Joint	KIT.	Kitchen																																																																																																																																																																																																																																																																																																																																																																																																																																																																																																																																																																																																																																																																																																																																																																																																																																																																																																																																																																													
DISP.	Dispenser	DN.	Down	DR.	Door	DS.	Downspout	D.S.P.	Dry Standpipe	DWR.	Drawer	DWG.	Drawing	EMR.	Elevator Machine Room	E.	East	EA.	Each	E.J.	Expansion Joint	EL.	Elevation	ELEC.	Electrical	ELEV.	Elevator	EMER.	Emergency	ENC.L.	Enclosure	E.P.	Electrical Panelboard	EQ.	Equal	EQPT.	Equipment	E.W.C.	Electric Water Cooler	EXIST.	Existing	EXPO.	Exposed	EXP.	Expansion	EXT.	Exterior	EIFS.	Exterior Insulated Finish System	EXP.CONST.	Exposed Construction	F.A.	Fire Alarm	F.B.	Flat Bar	F.D.	Floor Drain	FDN.	Foundation	F.E.	Fire Extinguisher	F.E.C.	Fire Extinguisher Cabinet	F.H.C.	Fire Hose Cabinet	FIN.	Finish	FLR.	Floor	FLASH.	Flashing	FLUOR.	Flourescent	F.O.C.	Face of Concrete	F.O.F.	Face of Finish	F.O.S.	Face of Studs	FPFG.	Fireproofing	F.P.S.C.	Fireproof Self Closing	F.S.	Full Size	FT.	Foot or Feet	FTG.	Footing	FURR.	Furring	FUT.	Future	GA.	Gage	GALV.	Galvanized	G.B.	Grab Bar	GL.	Glass	GND.	Ground	GR.	Grade	GYP.	Gypsum	G.W.B.	Gypsum Wallboard	G.W.T.	Glazed Wall Tile	H.B.	Hose Bibb	H.C.	Hollow Core	HDWD.	Hardwood	H.M.	Hollow Metal	HORIZ.	Horizontal	H.P.	High Point	HR.	Hour	HGT.	Height	I.D.	Inside Diameter	IMP.	Insulated Metal Panel	INSUL.	Insulation	INT.	Interior	JAN.	Janitor	JT.	Joint	KIT.	Kitchen																																																																																																																																																																																																																																																																																																																																																																																																																																																																																																																																																																																																																																																																																																																																																																																																																																																																																																																																																											
DN.	Down	DR.	Door	DS.	Downspout	D.S.P.	Dry Standpipe	DWR.	Drawer	DWG.	Drawing	EMR.	Elevator Machine Room	E.	East	EA.	Each	E.J.	Expansion Joint	EL.	Elevation	ELEC.	Electrical	ELEV.	Elevator	EMER.	Emergency	ENC.L.	Enclosure	E.P.	Electrical Panelboard	EQ.	Equal	EQPT.	Equipment	E.W.C.	Electric Water Cooler	EXIST.	Existing	EXPO.	Exposed	EXP.	Expansion	EXT.	Exterior	EIFS.	Exterior Insulated Finish System	EXP.CONST.	Exposed Construction	F.A.	Fire Alarm	F.B.	Flat Bar	F.D.	Floor Drain	FDN.	Foundation	F.E.	Fire Extinguisher	F.E.C.	Fire Extinguisher Cabinet	F.H.C.	Fire Hose Cabinet	FIN.	Finish	FLR.	Floor	FLASH.	Flashing	FLUOR.	Flourescent	F.O.C.	Face of Concrete	F.O.F.	Face of Finish	F.O.S.	Face of Studs	FPFG.	Fireproofing	F.P.S.C.	Fireproof Self Closing	F.S.	Full Size	FT.	Foot or Feet	FTG.	Footing	FURR.	Furring	FUT.	Future	GA.	Gage	GALV.	Galvanized	G.B.	Grab Bar	GL.	Glass	GND.	Ground	GR.	Grade	GYP.	Gypsum	G.W.B.	Gypsum Wallboard	G.W.T.	Glazed Wall Tile	H.B.	Hose Bibb	H.C.	Hollow Core	HDWD.	Hardwood	H.M.	Hollow Metal	HORIZ.	Horizontal	H.P.	High Point	HR.	Hour	HGT.	Height	I.D.	Inside Diameter	IMP.	Insulated Metal Panel	INSUL.	Insulation	INT.	Interior	JAN.	Janitor	JT.	Joint	KIT.	Kitchen																																																																																																																																																																																																																																																																																																																																																																																																																																																																																																																																																																																																																																																																																																																																																																																																																																																																																																																																																													
DR.	Door	DS.	Downspout	D.S.P.	Dry Standpipe	DWR.	Drawer	DWG.	Drawing	EMR.	Elevator Machine Room	E.	East	EA.	Each	E.J.	Expansion Joint	EL.	Elevation	ELEC.	Electrical	ELEV.	Elevator	EMER.	Emergency	ENC.L.	Enclosure	E.P.	Electrical Panelboard	EQ.	Equal	EQPT.	Equipment	E.W.C.	Electric Water Cooler	EXIST.	Existing	EXPO.	Exposed	EXP.	Expansion	EXT.	Exterior	EIFS.	Exterior Insulated Finish System	EXP.CONST.	Exposed Construction	F.A.	Fire Alarm	F.B.	Flat Bar	F.D.	Floor Drain	FDN.	Foundation	F.E.	Fire Extinguisher	F.E.C.	Fire Extinguisher Cabinet	F.H.C.	Fire Hose Cabinet	FIN.	Finish	FLR.	Floor	FLASH.	Flashing	FLUOR.	Flourescent	F.O.C.	Face of Concrete	F.O.F.	Face of Finish	F.O.S.	Face of Studs	FPFG.	Fireproofing	F.P.S.C.	Fireproof Self Closing	F.S.	Full Size	FT.	Foot or Feet	FTG.	Footing	FURR.	Furring	FUT.	Future	GA.	Gage	GALV.	Galvanized	G.B.	Grab Bar	GL.	Glass	GND.	Ground	GR.	Grade	GYP.	Gypsum	G.W.B.	Gypsum Wallboard	G.W.T.	Glazed Wall Tile	H.B.	Hose Bibb	H.C.	Hollow Core	HDWD.	Hardwood	H.M.	Hollow Metal	HORIZ.	Horizontal	H.P.	High Point	HR.	Hour	HGT.	Height	I.D.	Inside Diameter	IMP.	Insulated Metal Panel	INSUL.	Insulation	INT.	Interior	JAN.	Janitor	JT.	Joint	KIT.	Kitchen																																																																																																																																																																																																																																																																																																																																																																																																																																																																																																																																																																																																																																																																																																																																																																																																																																																																																																																																																															
REF.	Reference	REFR.	Refrigerator	RGR.	Register	REINF.	Reinforced	REQD.	Required	RESIL.	Resilient	REV.	Revision	R.F.#	Roof Fan #	R.H.	Roof Hatch	RM.	Room	R.O.	Rough Opening	R.O.B.	Run of Bank	R.O.W.	Right of Way	RWD.	Redwood	R.W.L.	Rain Water Leader	S.	South	S.C.	Solid Core	S.C.D.	Seat Cover Dispenser	SCHED.	Schedule	S.D.	Soap Dispenser	SECT.	Section	SHR.	Shelf	SHT.	Shower	SIM.	Sheet		Similar	SPEC.	Specification	SQ.	Square	S.S.	Stainless Steel	S.SK.	Service Sink	STA.	Station	S.T.C.	Sound Transmission Class	STD.	Standard	STL.	Steel	STOR.	Storage	STRUCT.	Structural	SUSP.	Suspended	SYM.	Symmetrical	T.	Tread	TB.	Tack Board	T.B.	Towel Bar	T.O.C.	Top of Curb	TEL.	Telephone	TEMP.	Tempered	TER.	Terrazzo	T.G.G.	Tongue and Groove	THK.	Thick	T.P.D.	Top of Pavement	T.V.	Toilet Paper Dispenser	T.O.W.	Top of Wall	TYP.	Typical	UNF.	Unfinished	U.O.N.	Unless Otherwise Noted	UR.	Urinal	VERT.	Vertical	VEST.	Vestibule	V.C.T.	Vinyl Composition Tile	V.W.C.	Vinyl Wall Covering	W.	West	W/	With	WB.	White Board	W.C.	Water Closet	WD.	Wood	W/O	Without	WP.	Waterproof	W.R.	Water Resistant	WSCT.	Wainscot	WT.	Weight	W.G.	Wire Glass																																																																																																																																																																																																																																																																																																																																																																																																																																																																																																																																																																																																																																																																																																																																																																																																																																																																																																																																																																	
	SPRAYED FIREPROOFING		POROUS FILL																																																																																																																																																																																																																																																																																																																																																																																																																																																																																																																																																																																																																																																																																																																																																																																																																																																																																																																																																																																																																																																																																																					
	FINISH WOOD		STRUCTURAL CONCRETE																																																																																																																																																																																																																																																																																																																																																																																																																																																																																																																																																																																																																																																																																																																																																																																																																																																																																																																																																																																																																																																																																																					
	METAL		LIGHTWEIGHT CONCRETE																																																																																																																																																																																																																																																																																																																																																																																																																																																																																																																																																																																																																																																																																																																																																																																																																																																																																																																																																																																																																																																																																																					
	RIGID INSULATION		CONCRETE MASONRY UNIT																																																																																																																																																																																																																																																																																																																																																																																																																																																																																																																																																																																																																																																																																																																																																																																																																																																																																																																																																																																																																																																																																																					
	BATT INSULATION		BRICK VENEER																																																																																																																																																																																																																																																																																																																																																																																																																																																																																																																																																																																																																																																																																																																																																																																																																																																																																																																																																																																																																																																																																																					

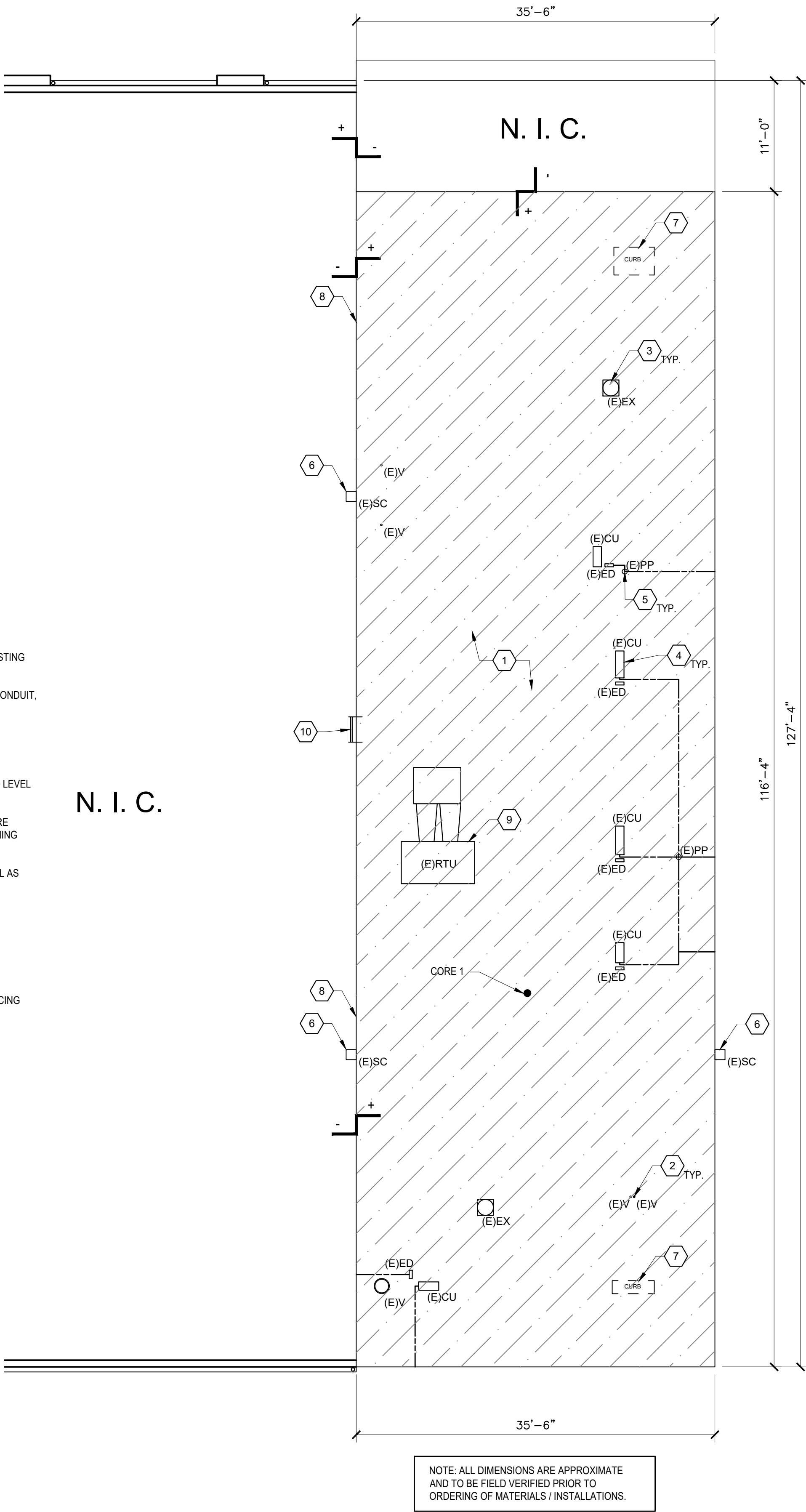
PLAN LEGEND	
	EXISTING ROOFING SYSTEM TO BE REMOVED
	EXISTING TO REMAIN
N.I.C.	DENOTES "AREA OF NO WORK" (UNLESS OTHERWISE NOTED)
	KEYED DEMOLITION NOTATIONS
	EXISTING TO REMOVED
	CHANGED IN ELEVATION
(E)EX	EXISTING EXHAUST FAN
	(E)RD EXISTING ROOF DRAIN
(E)CU	EXISTING CONDENSING UNIT
(E)V	EXISTING VENT
(E)PP	EXISTING PIPE PORTAL
(E)ED	EXISTING ELECTRICAL DISCONNECT
(E)SC	EXISTING SCUPPER
HP	HIGH POINT
	EXISTING CONDUIT

DEMOLITION KEY NOTES:

- EXISTING ROOF SYSTEM TO BE REMOVED IN ITS ENTIRETY DOWN TO DECK.
- EXISTING PLUMBING VENTS TO REMAIN.
- REMOVE AND SALVAGE EXISTING EXHAUST FANS FOR REINSTALLATION. EXISTING CURB AND FLASHING TO BE REMOVED IN THEIR ENTIRETY.
- REMOVE AND SALVAGE EXISTING CONDENSING UNIT, REFRIGERANT LINES, CONDUIT, AND ELECTRICAL DISCONNECT.
- EXISTING PIPE PORTAL TO BE REMOVED AND PREPARED TO BE REPLACED.
- EXISTING SCUPPER, AND DOWNSPOUT TO BE REMOVED IN THEIR ENTIRETY.
- EXISTING CAPPED EXHAUST DUCTS TO BE REMOVED AND DECK FILLED IN SO LEVEL WITH ADJACENT SURFACES.
- EXISTING COUNTER FLASHING AND SEALANT AROUND THE PERIMETER WHERE EXPOSED, TO REMAIN. PREP WALL ABOVE FLASHING FOR NEW LIQUID FLASHING ENTIRE HEIGHT.
- EXISTING ROOF TOP UNIT ON DUNNAGE TO REMAIN. REMOVE AND REINSTALL AS NEEDED FOR ROOF DEMOLITION AND REPLACEMENT.
- EXISTING LADDER TO REMAIN.
- EXISTING GUTTER AND DOWNSPOUTS TO DEMOLISHED. PREP AREA FOR REPLACEMENTS.
- EXISTING ROOF DRAIN TO BE REMOVED AND PREPARED FOR REPLACEMENT.
- EXISTING 8" TALL DUCT VENT WITH BRACING CABLES. VENT TO REMAIN. BRACING CABLES TO SALVAGED FOR RE-INSTALLATION.

ROOF CORE INFORMATION:

- CORE 1:
- METAL DECK
 - 1" FIBERGLASS
 - 1" POLY-ISO INSULATION
 - 3/4" BUILT-UP ROOF
 - 1-1/2" POLY-ISO INSULATION
 - 1/2" PERLITE INSULATION
 - BUILT-UP ROOF
 - 3/4" WOOD FIBER
 - MODIFIED BITUMEN MEMBRANE
- TOTAL ASSEMBLY = 5"

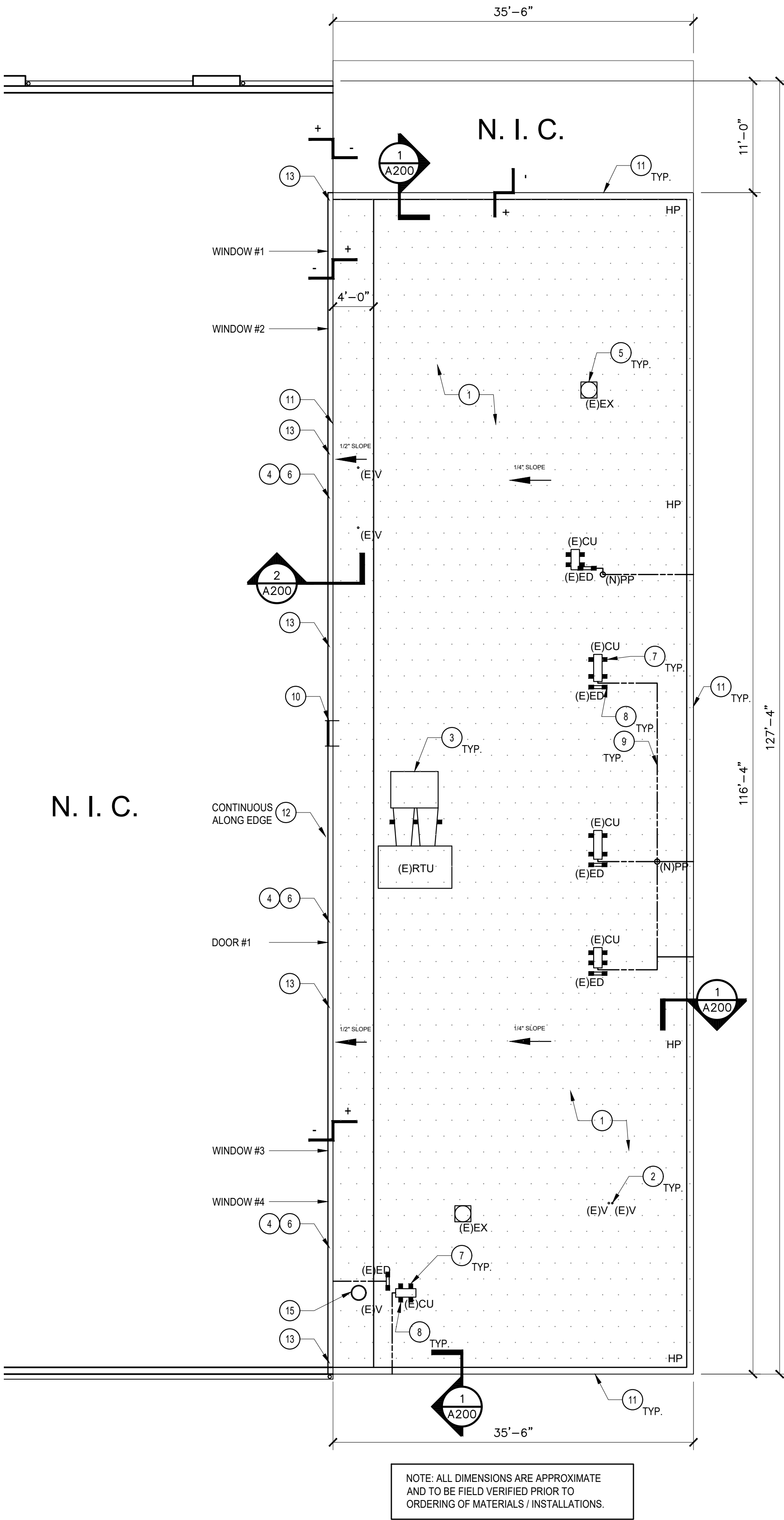


PLAN LEGEND	
	NEW SCHEDULED ROOFING SYSTEM, MINIMUM 1/4" PER 12" SLOPE
N.I.C.	DENOTES "AREA OF NO WORK" (UNLESS OTHERWISE NOTED)
	KEYED CONSTRUCTION NOTATIONS
	CHANGED IN ELEVATION
(E)EX	EXISTING EXHAUST FAN
(E)CU	EXISTING CONDENSING UNIT
(E)V	EXISTING VENT
(N)PP	NEW PIPE PORTAL
(E)ED	EXISTING ELECTRICAL DISCONNECT
(N)SC	NEW SCUPPER
HP	HIGH POINT
	EXISTING CONDUIT

CONSTRUCTION KEY NOTES:

- NEW SCHEDULED ROOFING SYSTEM. SEE PROJECT MANUAL AND TYPICAL ROOFING DETAILS ON A200.
- EXISTING PLUMBING VENT TO REMAIN. SEE DETAIL 6 / A200 FOR ADDITIONAL INFORMATION FOR LARGER DIAMETER PIPES PROVIDE "CHINESE HATS" AND DRAW BAND.
- PROVIDE CRICKETS FOR WATER DIVERATION AS REQUIRED.
- HYBRID FLASHING WITH SINGLE PLY MEBRANE, SEE DETAIL 1 / A201. NOTE THERE ARE EXISTING WINDOWS AND AN ACCESS DOOR THAT MUST BE WORKED AROUND, SEE EXHIBIT B "EXISTING SURVEY PHOTOS" FOR WALL PHOTOS, AND CHART ON THIS PAGE.
- EXISTING EXHAUST TO BE REINSTALLED ON NEW CURB, SEE DETAIL 11/ A200.
- EXISTING COUNTER FLASHING ON ROOF BELOW TO REMAIN. SCHEDULED LIQUID FLASHING TO BE APPLIED OVER ENTIRE WALL. SEE DETAIL 1 / A201 FOR ADDITIONAL INFORMATION.
- SALVAGED EQUIPMENT TO BE REINSTALLED ON NEW EQUIPMENT RAIL, SEE RAIL DETAIL 5 / A200.
- SALVAGED POWER AND DISCONNECTS TO BE RE-INSTALLED ON NEW EQUIPMENT RAIL, SEE DETAIL 5 / A200.
- EXISTING REFRIGERANT AND CONDUIT TO BE REINSTALLED ON PIPE SUPPORTS, MIRO INDUSTRIES PILLOW BLOCK AND OR STRUT SUPPORTS OR APPROVED EQUAL AT 10'-0" O.C. MAX. SEE DETAIL 9/ A200 FOR PIPE PORTAL.
- EXISTING LADDER TO BE SCRAPPED, SANDED, AND PAINTED. LADDER PENETRATION SIMILAR TO DETAIL 8/ A200.
- NEW METAL ROOF EDGE, SEE TYPICAL DETAIL 1 / A200.
- NEW GUTTER, SEE DETAIL 2 / A200, AND 2 / A201.
- NEW DOWNSPOUT TO ROOF BELOW, SEE DETAIL 3 / A201.
- REINSTALL SALVAGED DUCT VENT CABLES. PROVIDE PITCH POCKETS AT CABLE ATTACHMENT LOCATIONS, SIMILAR TO DETAIL 9 / A200.
- EXISTING DUCT VENT, SEE DETAIL 4 / A200.

WINDOW AND DOOR INFORMATION	
WINDOW #1 - 8"	ABOVE EXISTING ROOF BELOW
WINDOW #2 - 7"	ABOVE EXISTING ROOF BELOW
WINDOW #3 - 12"	ABOVE EXISTING ROOF BELOW
WINDOW #4 - 11.5"	ABOVE EXISTING ROOF BELOW
DOOR #1	- 7" ABOVE EXISTING ROOF BELOW



SJM

SJM ARCHITECTURE, LLC
954 KINDERKAMACK ROAD
RIVER EDGE, NJ, 07661
551.427.1487

STEPHEN J. MARTINEZ
NJ AI 20890

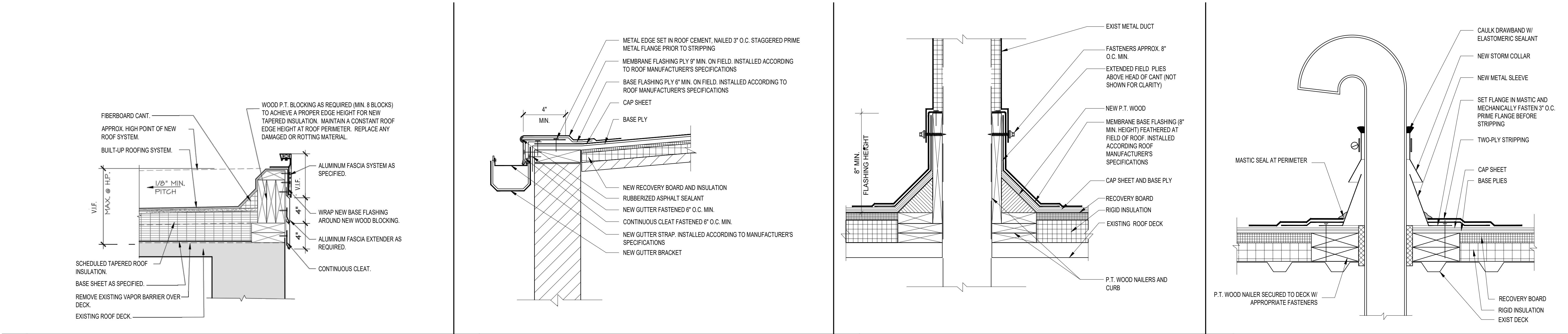
No	Description	Date
	FOR RE-BID	3/27/2023

Project Number 2022.SM.004
Issue Date 3/27/2023
Drawn By
Scale AS NOTED
Drawing Title

ROOF PLANS

Drawing Number

A100

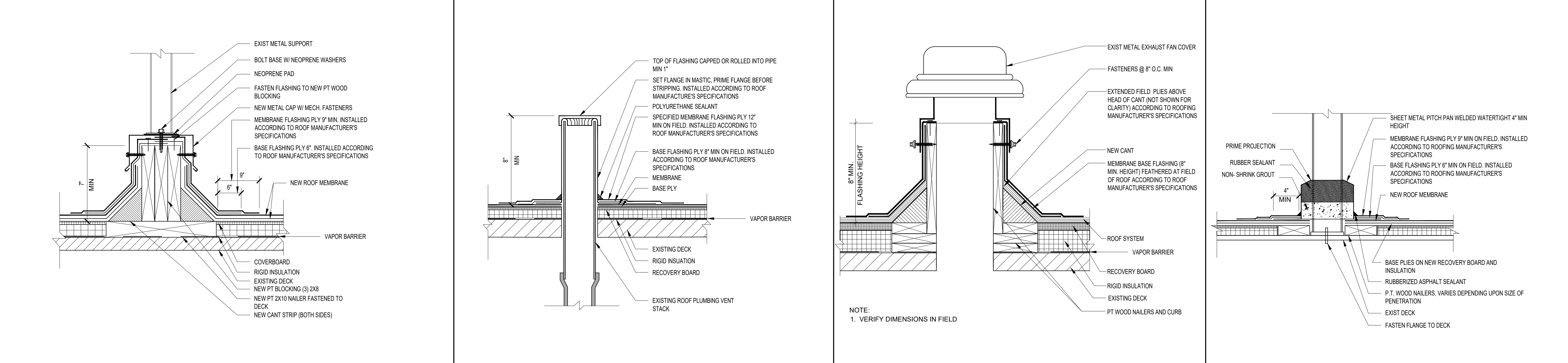


1 ROOF EDGE DETAIL
SCALE: N.T.S.

2 GUTTER DETAIL
SCALE: N.T.S.

3 PENETRATION DETAIL
SCALE: N.T.S.

4 DUCT VENT DETAIL
SCALE: N.T.S.

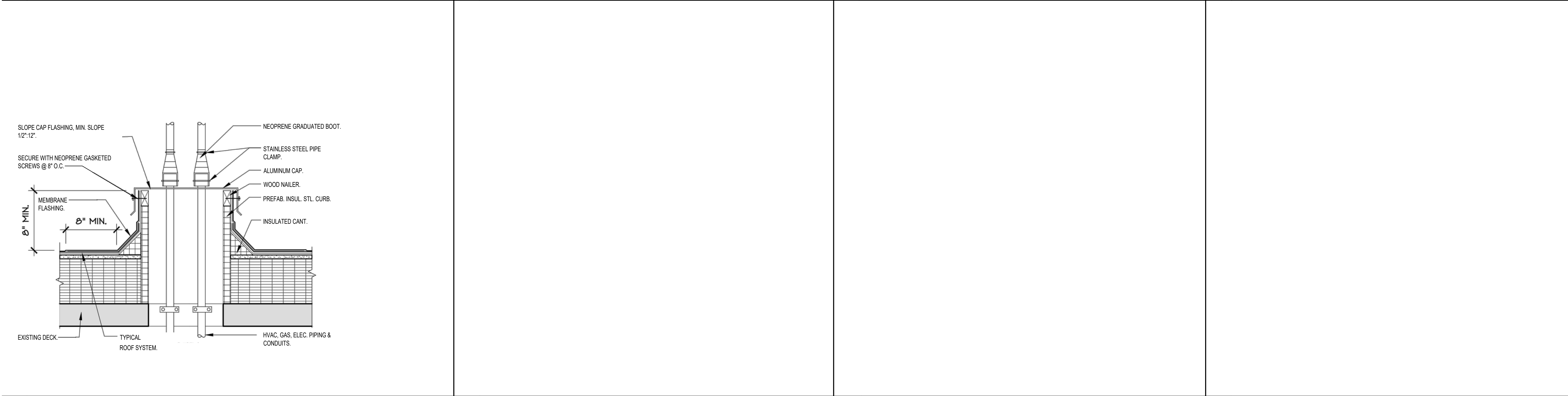


5 EQUIPMENT SUPPORT DETAIL
SCALE: N.T.S.

6 PLUMBING VENT DETAIL
SCALE: N.T.S.

7 EXHAUST VENT CURB DETAIL
SCALE: N.T.S.

8 PITCH POCKET DETAIL
SCALE: N.T.S.



9 EPDM BOOT DETAIL
SCALE: N.T.S.

10 NOT USED
SCALE: NONE

11 NOT USED
SCALE: NONE

12 NOT USED
SCALE: NONE

SJM

SJM ARCHITECTURE, LLC
954 KINDERKAMACK ROAD
RIVER EDGE, NJ, 07661
551.427.1487

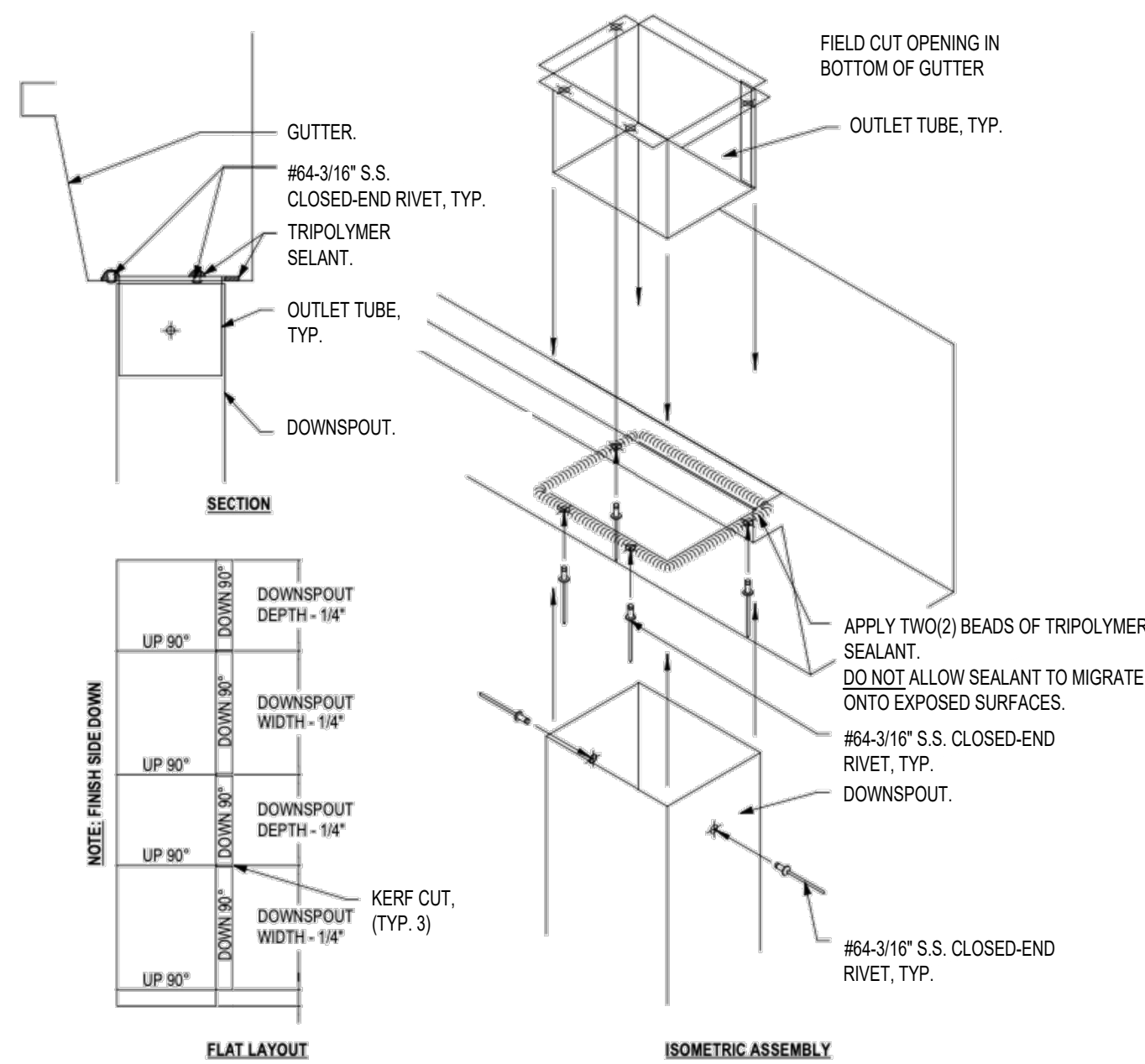
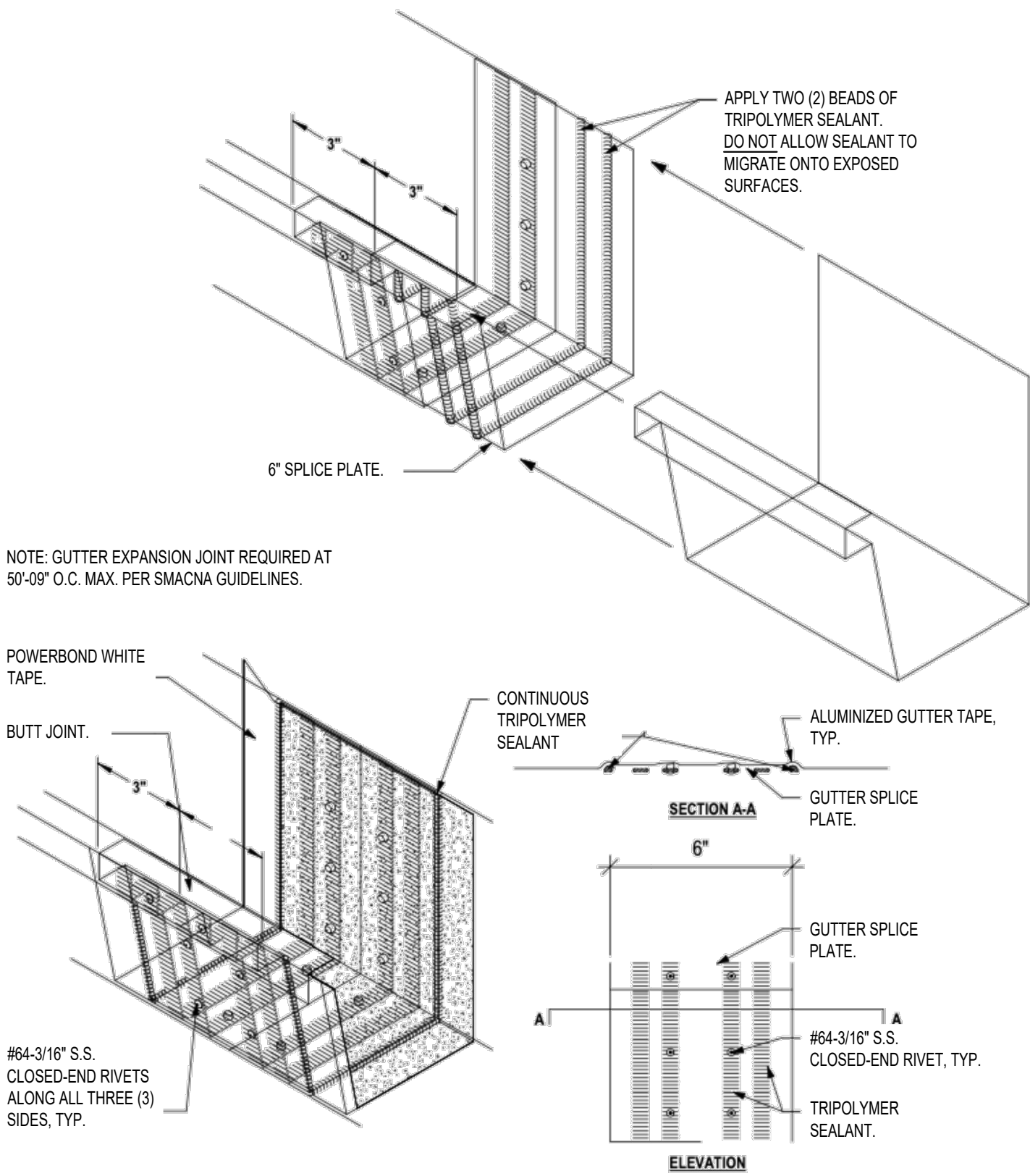
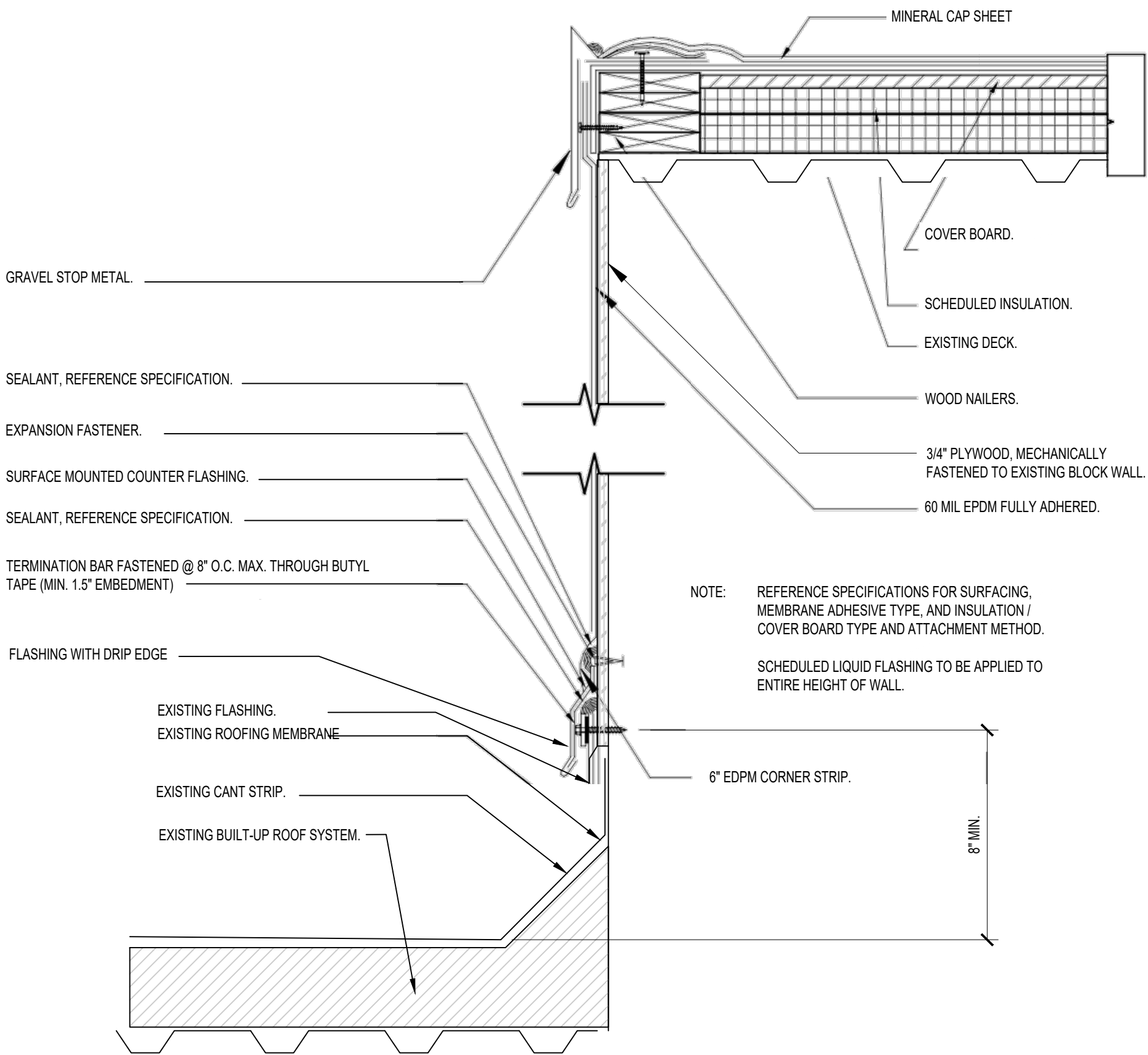
STEPHEN J. MARTINEZ
NJ AI 20890

No	Description	Date
	FOR RE-BID	3/27/2023

Project Number 2022.SM.004
Issue Date 3/27/2023
Drawn By
Scale AS NOTED
Drawing Title

ROOF DETAILS

Drawing Number
A200



1 HYBRID FLASHING
SCALE: 1-1/2" = 1'-0"

2 GUTTER ASSEMBLY DETAIL
SCALE: N.T.S.

3 LEADER ASSEMBLY DETAIL
SCALE: N.T.S.

SJM

SJM ARCHITECTURE, LLC

954 KINDERKAMACK ROAD
RIVER EDGE, NJ, 07661
551.427.1487

STEPHEN J. MARTINEZ
NJ AI 20890

No	Description	Date
	FOR RE-BID	3/27/2023

Project Number	2022.SM.004
Issue Date	3/27/2023
Drawn By	
Scale	AS NOTED
Drawing Title	

ROOF DETAILS

Drawing Number

A201