

January 18<sup>th</sup>, 2023

**NJSEA Pump Station Generator Replacement**

East Rutherford, New Jersey

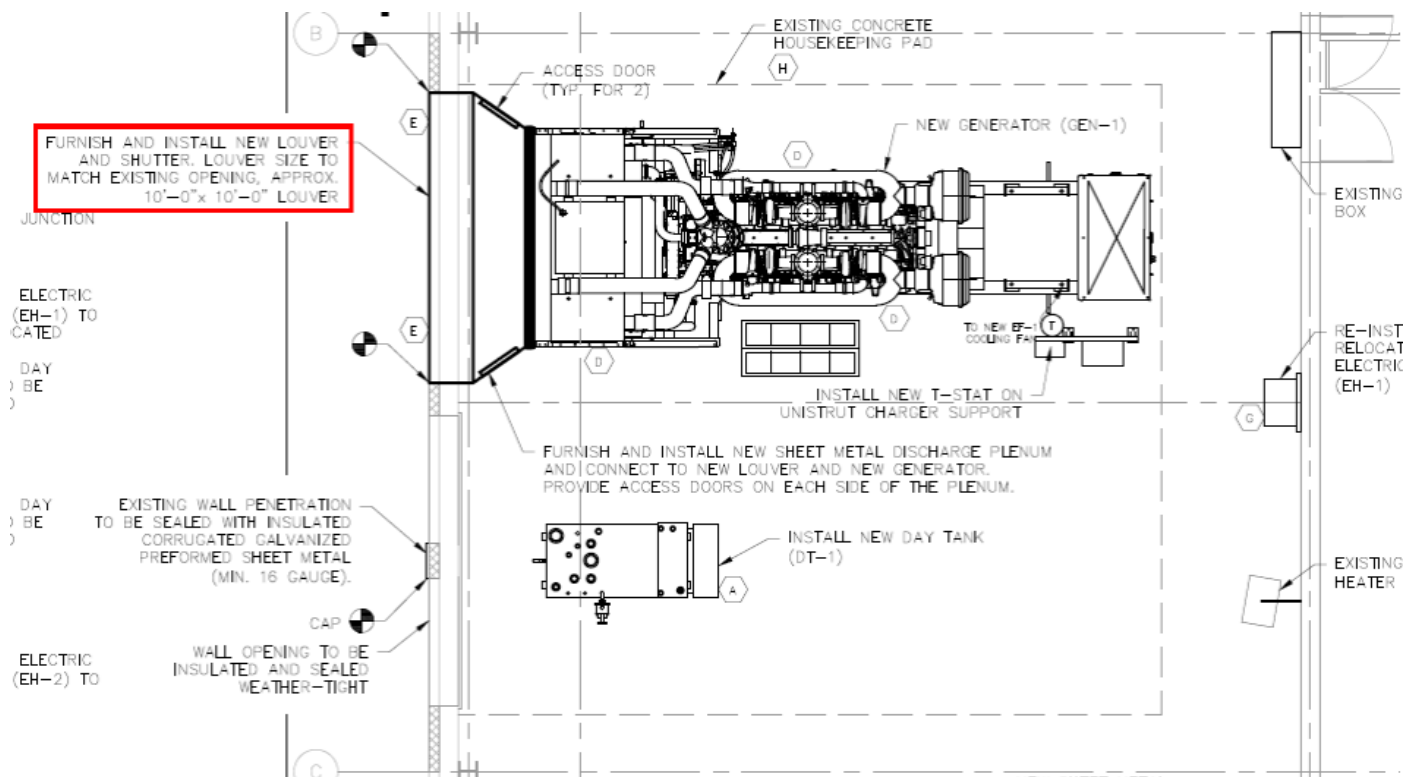
**Bid Due Date:** January 26<sup>th</sup>, 2023 @ 12:00PM

**ADDENDUM #3**

**Revised Price Due Date:** The bid due date with updated scope is **12PM on Thursday, January 26, 2023.**

**RFI Questions**

1. **Question:** Generator main breaker is in existing switchgear?  
**Response:** Breaker and protective relay is located in existing EATON ATS. No breaker is required at generator terminals.
2. **Question:** Two-year warranty? Stated elsewhere one year.  
**Response:** The warranty is to be two (2) years.
3. **Question:** To be able to handle the full fuel flow you will require two three filter Raycor filters set ups. Is this what you are looking for?  
**Response:** Yes, provide three filter sets as required for proper operation.
4. **Question:** Redundant Dual full flow lube oil filters? With oil change intervals of 500 engine hours this is really not needed in a stand by application. Used in a prime power application when there is no redundant gen set.  
**Response:** No. Use standard engine manufacturers.
5. **Question:** Exhaust outlet pipe and insulation will be provided under another Contract?  
**Response:** Provide and install the exhaust outlet pipe and insulation under this contract.
6. **Question:** Dual separate 24 Volt automatic starting systems? The engine has two starters and two banks of batteries standard. You are asking for 4 starter motors and 4 sets of batteries?  
**Response:** No, install standard setup with 2 starters and 2 batteries.
7. **Question:** Provisions for manual excitation from a 24 VDC source? Starting batteries? This could lead to over or under voltage condition if you try to excite by hand. An electronic voltage regulator changes excitation voltages constantly in nanoseconds depending on the load on the generator.  
**Response:** Disregard the installation of manual excitation.
8. **Question:** The existing radiator discharge openings will not be large enough. Who designs the louvers and opening sizes?  
**Response:** Drawing M-200 calls out to match existing 10 x 10' opening. We would need to see cuts of your proposed generator MFG for our review.



Include the acknowledgment of this addendum in your proposal submission.

Company \_\_\_\_\_ Name (Print) \_\_\_\_\_ Date \_\_\_\_\_

Receipt of Addendum #3: \_\_\_\_\_ (Signature)

**End of Addendum #3**