

October 18th, 2022

NJSEA Pump Station Generator Replacement

East Rutherford, New Jersey

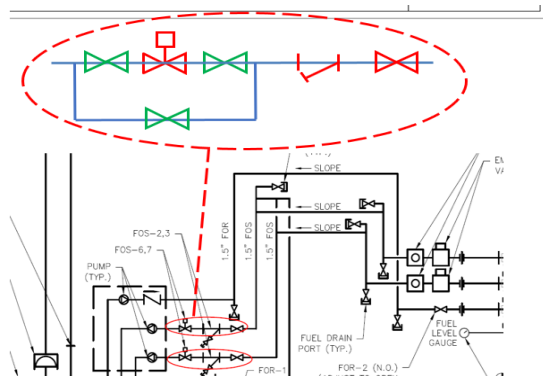
Proposal Due Date: November 1st, 2022 @ 12:00PM

ADDENDUM #3

RFI Questions

1. Question: On drawing M-300, detail 5, a critical alarm shut-off solenoid valve is figured on each of the FOS lines along with 2 shutoff valves on either side of the solenoid valve and a bypass with an additional shut off valve. This detail contradicts the New Fuel Line Piping New Work Schematic (M-100 detail 2) which shows a shutoff valve, FOS 2,3 strainer, and FOS 6,7 solenoid valve on each FOS line. This detail also shows no bypass. I've attached screenshots to help visualize this. Can you advise on which detail should be figured in our estimate?

Response: Both drawings (new fuel line piping schematic and day tank flow diagram) supplement each other.



The three (3) additional valves (2x isolation + by-pass) are intended for servicing the solenoid valve. The solenoid valve is more complex and has greater chance for sustaining wear and tear degradation.

The isolation valves (green) will allow to isolate the solenoid valve and remove it without the need to drain large sections of fuel piping.

The by-pass valve (green) will allow to re-fill the day-tank while the work on solenoid valve is in progress.

The "red" isolation valve will be used when the strainer (red) needs cleaning or servicing.

Attachments

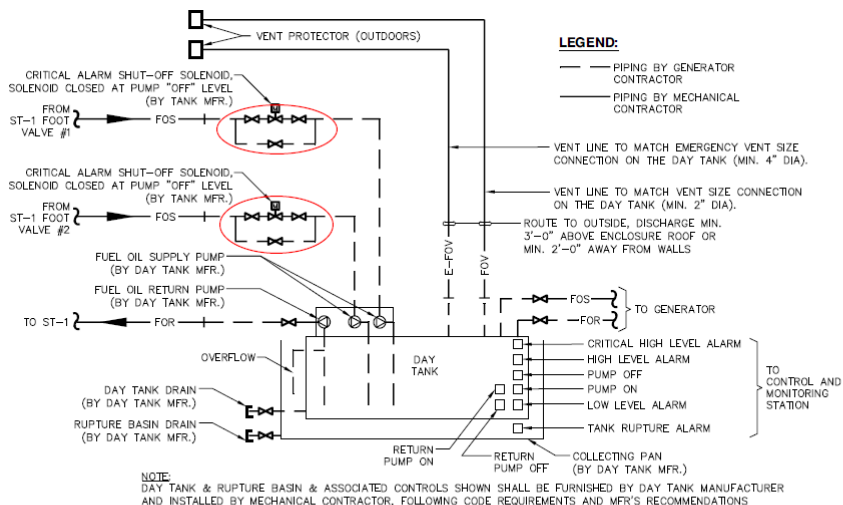
1. Mechanical Drawing Screenshots (Conflicts)

Include the acknowledgment of this addendum in your proposal submission.

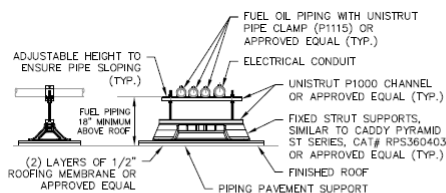
Company	Name (Print)	Date
---------	--------------	------

Receipt of Addendum #3: _____ *(Signature)*

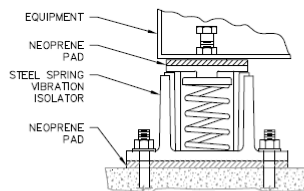
End of Addendum #3



5 TYPICAL DAY TANK FLOW DIAGRAM
SCALE: NTS



9 FUEL PIPING FLOOR SUPPORT DETAIL
SCALE: NTS



10 VIBRATION ISOLATOR DETAIL
SCALE: NTS

6-2-22 ISSUED FOR REVIEW

6-15-22 ISSUED FOR DCA APPROVAL

Date Issued Revision No.

trlad engineers
122 Main Street | Madison, NJ 07940
973.984.1919 | trladcei.com

Drawing Title:
MECHANICAL SCHEDULES AND DETAILS

Scale:
AS NOTED

Issue Date:
4/15/22

Proj. Manager:
ANC

Proj. Engineer:
PMG

Alt. Project No.:
CEI215080

M-300

